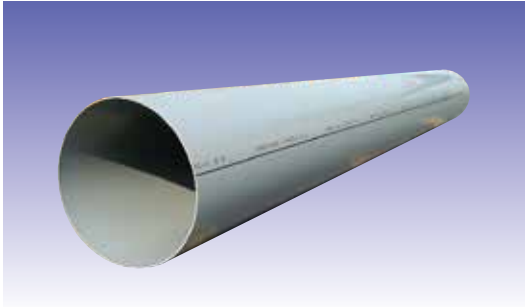


## ESLON DUCT PIPES

### ● Duct Pipes

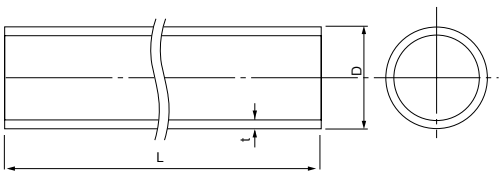


- ⊙ Available ventilation application.
- ⊙ Excellent chemical resistance.
- ⊙ Excellent physical properties like impact, bending and tensile strength.
- ⊙ Self extinguishing and excellent flame retardant.
- ⊙ Light weight and easy installation.

### ■ Size E-Type

Unit:mm

Size	D	Tolerance	t	L	Weight (kg/pc)
E150	165	±0.8	2.5	4,000	7.3
E200	216	±1.8	2.5	4,000	9.7
E250	267	±2.6	3.0	4,000	14.4
E300	318	±3.0	3.0	4,000	17.2
E350	370	±3.0	3.5	4,000	23.0
E400	420	±3.5	4.0	4,000	30.0
E450	470	±3.5	4.5	3,000	28.6
E450	470	±3.5	4.5	4,000	38.2
E500	520	±3.5	5.0	3,000	35.2
E550	550	±3.5	5.0	4,000	46.9
E600	612	±3.5	6.0	2,000	33.1



## DUCT FITTINGS

### ● Sleeve (Socket) Type



### ■ Products List

Product	Size(A)
90°Elbow	150~600
45°Elbow	150~600
Socket	150~600
Reducing Socket	All size
Eccentric Reducing Socket	All size
Tee	All size
Y-Tee	All size
Cap	150~600

### ● Flange Type



### ■ Products List

Product	Size(A)
90°Elbow	150~600
45°Elbow	150~600
Reducing Socket	All size
Eccentric Reducing Socket	All size
Tee	All size
Expansion Joint	75~600
Lever-Type Damper	150~600
Handle-Type Damper	75~300
Gear-Type Damper	300~600
Flange	75A~600A
Blind Flange	75~600