

JIS

ANSI/ASTM

DIN/ISO

ESLON YP BALL VALVE



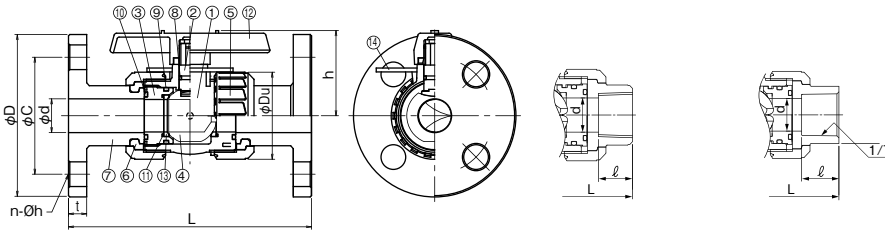
PAT.No.012171,3012204

- Unique flow channel design of the ball enable precise flow rate control.
- High range ability over 200 and equal percentage flow characteristic.
- Large visual indicator for flow rate control.

Flange Type · Thread Type and TS Socket Type

● Flange Type

● Female Thread Type ● TS Socket Type



Parts List

No.	Part Name	Q'ty	Material
①	Body	1	PVC
②	Stem	1	PVC
③	Ball Stopper	1	PVC
④	Ball	1	PVC
⑤	Union Nut	2	PVC
⑥	Set Ring	2	PVC
⑦	Flange End	2	PVC
⑧	Stem O-Ring	1	EPDM or FKM
		2	EPDM or FKM
⑨	Ball Stopper O-Ring	1	EPDM or FKM
⑩	Union O-ring	2	EPDM or FKM
⑪	Ball Seat O-Ring	2	EPDM or FKM
⑫	Handle	1	ABS
⑬	Ball Seat	2	PTFE
⑭	Open position display plate	1	PVC

Size

Flange Type

Size		d	L	H	h	Flange(JIS 10K)				Weight (kg/pc) Flange	Q'ty per Carton
A	B					φD	φC	n-φh	t		
15	1/2	15	143	98	50	95	70	4-15	14	0.4	12
20	3/4	20	172	103	53	100	75	4-15	14	0.6	12
25	1	25	187	132	66	125	90	4-19	14	0.9	12
32	1 1/4	30	190	143	74	135	100	4-19	16	1.2	12
40	1 1/2	40	212	171	100	140	105	4-19	16	1.7	2
50	2	50	234	185	107	155	120	4-19	20	2.6	2

Unit:mm

Usable Liquid Temperature & Maximum Working Pressure

Material	Usable Temperature(°C)	max. Working Pressure at Room Temp.(MPa)
PVC	0~50	1.0

Thread Type and TS Socket Type

Size		d	L		H	h	Female Thread		TS Socket			Weight (kg/pc)		Q'ty per Carton
A	B		Thread	TS Socket			Size	ℓ	d1	1/T Taper	ℓ	Thread	TS	
15	1/2	15	97	109	74	50	Rc 1/2	18	22.3	1/37	22	0.2	0.2	24
20	3/4	20	117	132	82	53	Rc 3/4	18	26.3	1/42	25	0.3	0.3	24
25	1	25	128	143	102	69	Rc 1	23	32.3	1/43	29	0.4	0.4	24
32	1 1/4	32	146	166	115	75	Rc 1 1/4	23	38.4	1/37	32	0.6	0.6	24
40	1 1/2	40	163	175	149	102	Rc 1 1/2	25	48.5	1/38	35	1.1	1.1	4
50	2	50	188	203	166	108	Rc 2	30	60.6	1/34	38	1.6	1.6	4

Unit:mm

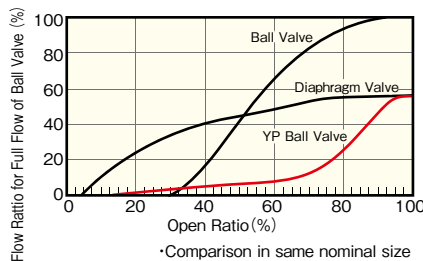
*The valve should be installed in correct flow direction according to the arrow noted on the body.

Conforming Standard

Connection	Standard	Classification
Flange	JIS10K	JIS B 2220
	ANSI	ASME / ANSI B16.5
	DIN/ISO	DIN EN 1092-1 PN-10
Socket	JIS	JIS K 6743
	ASTM	ASTM D2467
	DIN/ISO	DIN8063
Thread	JIS	JIS B 0203 (Rc)
	ANSI	ANSI B1.20.1 (NPT)
	DIN/ISO	DIN2999 (Rc-Rp)

*For flange, dimension of bolt holes conforming the standards

Flow Characteristic of YP Ball Valve



Important Notes

Do not use for the fluid containing slurry, solid, sediment, or crystallized fluid. Or for those kinds of fluid, strainer should be used in upstream.