

JIS

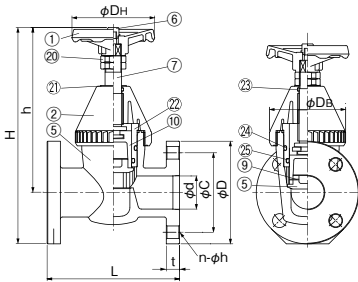
ESLON GLOBE VALVE



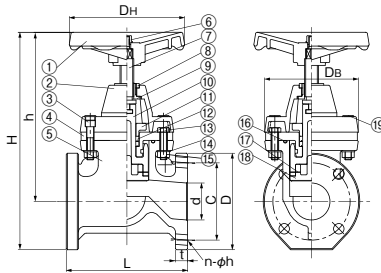
- Superior chemical resistance and durability as unique plug sealing and non-contact stem with medium.
- Built in indicator for open-close position and preventive mechanism for over-tightening (15~50A)
- Flat at the bottom of flange for prevention of tumbling and for better workability in plumbing.

Flange Type · Thread Type and TS Socket Type

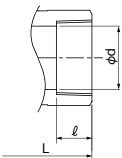
● Flange Type (15A~50A)



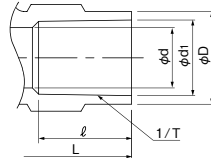
● Flange Type (65A~100A)



● Female Thread Type



● TS式



Parts List

No.	Part Name	Q'ty	Material
①	Handle	1	ABS
②	Bonnet	1	PVC
③	Bolt	4	Ni plated SCM
④	Bonnet	1	PVC
⑤	Body	1	PVC
⑥	Handle Nut	1	PVC
⑦	Stem	1	C3601
⑧	Set Nut	1	C3601
⑨	Sleeve	1	C3601
⑩	Disk Holder	1	PVC
⑪	Gasket Stopper	1	PP
⑫	Y Gasket	2	EPDM
⑬	Hexagon Bolt	4	Ni plated SCM
⑭	Washer	8	SUS304
⑮	Hexagon Nut	8	SUS304
⑯	O-ring	1	EPDM
⑰	Set Pin	—	PVC
⑱	Gate	1	PP
⑲	Bolt Cap	1	PP
⑳	Stopper Nut	2	PVC
㉑	Slust Washer	1	PTFE
㉒	Bush	1	PVC
㉓	O-ring	1	NBR
㉔㉕	O-ring	1	EPDM or FKM

● Thrust washer is assembled for size 40A and 50A.

⚠ Important Notes
Fluid containing slurry, solid, sediment, or crystallized fluid might disable sealing.

Size Flange Type

Size		d	L	H (max)	h (max)	DH	DB	Flange (JIS 10K)				Weight (kg/pc)	Q'ty per Carton
A	B							D	C	n-φ	t		
15	1/2	16	85	199	152	65	52	95	70	4-15	14	0.5	24
20	3/4	21	95	215	165	65	62	100	75	4-15	14	0.6	24
25	1	26	110	239	177	80	72	125	90	4-19	14	0.9	24
32	1 1/4	32	135	272	205	80	83	140	100	4-19	16	1.3	8
40	1 1/2	41	190	304	234	125	105	140	105	4-19	16	1.9	2
50	2	50	200	327	249	125	115	155	120	4-19	20	2.6	2
65	2 1/2	65	220	390	303	150	170	175	140	4-19	22	5.5	2
80	3	80	240	442	350	210	189	185	150	8-19	22	7.5	2
100	4	102	290	500	395	210	231	210	175	8-19	24	11.0	1

Thread Type (15A ~ 50A) and TS Socket Type (15A ~ 25A)

Size		d	L		H(max)		h(max)		DH	DB	Female Thread		TS Socket		Weight(kg/pc)		Q'ty per Carton	
A	B		Thread	TS	Thread	TS	Thread	TS			Size	ℓ	d1	1/T Taper	ℓ	Thread		TS
15	1/2	16	85	110	169	169	152	152	65	52	Rc 1/2	15	22.4	1/34	30	0.3	0.3	24
20	3/4	21	95	130	186	186	165	165	65	62	Rc 3/4	17	26.5	1/34	35	0.4	0.4	24
25	1	26	110	150	201	201	177	177	80	72	Rc 1	20	32.6	1/34	40	0.5	0.5	24
32	1 1/4	32	135	—	234	—	205	203	80	83	Rc 1 1/4	22	—	—	—	0.8	—	8
40	1 1/2	41	140	—	257	—	234	225	125	105	Rc 1 1/2	25	—	—	—	1.3	—	2
50	2	50	180	—	298	—	249	239	125	115	Rc 2	28	—	—	—	1.8	—	2

Usable Liquid Temperature & Maximum Working Pressure

Material	Usable Temperature (°C)	max. Working Pressure at Room Temp (MPa)
PVC	0~50	1.0

Conforming Standard

Connection	Standard	Classification
Flange	JIS10K	JIS B 2220
Socket	JIS	JIS K 6743
Thread	JIS	JIS B 0203(Rc)

● For flange, dimension of bolt holes conforming the standards