

JIS

ESLON MINI BALL VALVE

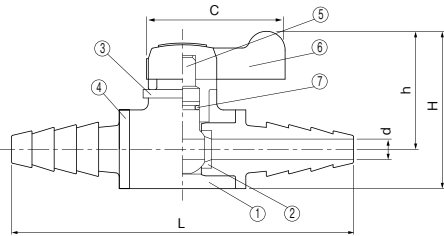


- Low stem torque and reliable sealing performance.
- Position indicator at handle enable easier flow calibration.
- Five types of end connections and several combination on both end connection available.

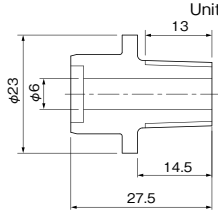
Thread Type and TS Socket Type

Thread Type · TS Socket Type and Hose Type

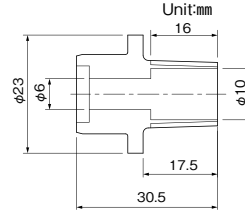
●Hose×Hose (6A)



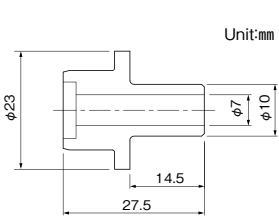
●Male Thread (R 1/4,3/8)



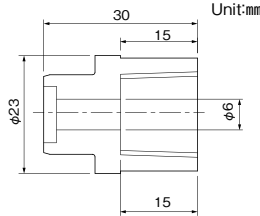
●Male Thread (R 1/2)



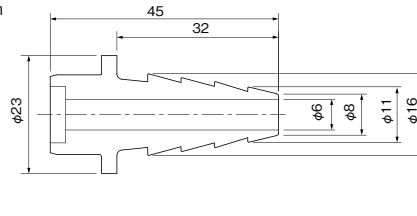
●Straight



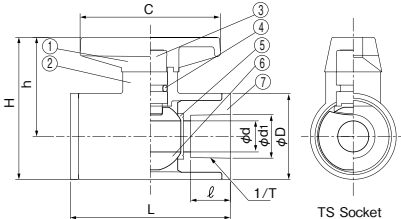
●Female Thread (Rc 1/4,3/8)



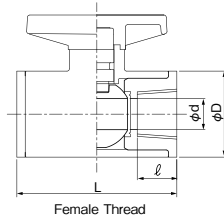
●Hose



●TS Socket (13A·15A)



●Female Thread (15A)



Size

Size		d	H	h	D	C	Female Thread				TS Socket			Q'ty per Carton
A	B						Size	l	d1	1/T Taper	l	l	l	
6	1/8	6	47	35	23	40	—	—	—	—	—	—	—	40 (20×2)
13	3/8	13	60	42	35	60	—	—	18.3	1/33	16.5	—	—	40
15	1/2	13	60	42	35	60	Rc1/2	16	22.3	1/33	16.5	—	—	40

*Female thread dimensions conform to JIS B 0203.
*Please refer to dimension table for combination of end connection.

Usable Liquid Temperature & Maximum Working Pressure

Material	Usable Temperature (°C)	max. Working Pressure at Room Temp (MPa)
PVC	0~50	1.0

Conforming Standard

Connection	Standard	Classification
Socket	JIS	JIS K 6743
Thread	JIS	JIS B 0203 (Rc)

Parts List for 6A

No.	Part Name	Q'ty	Material
①	Body	1	PVC
②	Ball Seat	2	EPDM or FKM
③	Stem Stopper	1	PVC
④	Socket	1	PVC
⑤	Ball	1	PVC
⑥	Handle	1	ABS
⑦	O-ring	1	EPDM or FKM

Parts List for 13A & 15A

No.	Part Name	Q'ty	Material
①	Handle	1	ABS
②	Body	1	PVC
③	Stem	1	PVC
④	O-ring	1	EPDM or FKM
⑤	Ball Seat	2	PTFE
⑥	Ball	1	PVC
⑦	Socket	2	PVC

L & Weight for Each Connection Type

Size	Connection Type	L	Weight (g/pc)
6A	Male Thread×Male Thread	66 (72)	30
	Male Thread×Female Thread	69 (72)	40
	Male Thread×Hose	83 (86)	40
	Male Thread×Straight	66 (69)	30
	Female Thread×Female Thread	71	40
	Female Thread×Hose	85	40
	Female Thread×Straight	69	40
	Hose×Hose	100	40
	Hose×Straight	83	40
	Straight×Straight	66	30
13A · 15A	Same type for both ends	Female Thread Rc1/2	67 90
		TS 13	67 90
		TS 15	67 80

*13 and 15A : Same type for both ends.
*L : L for R1/2 thread end.

Important Notes

- Gasifying, volatile, or evaporating fluid such as hydrogen peroxide and sodium hypochlorite might rise inner pressure of valve and burst the valve. Please contact us concerning such risk.
- Do not use for the fluid containing slurry, solid, sediment, or crystallized fluid. Or for those kinds of fluid, strainer should be used in upstream.