

JIS

ESLON COMPACT BALL VALVE



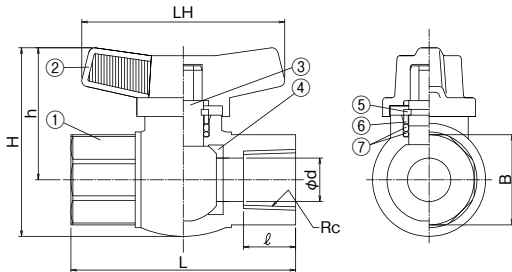
- Compact body and short face to face dimension enable installation even in narrow space.
- Usable even in the condition with vibration or thermal expansion as unified body with connection end.
- Six colors of handle enable easier management of application and fluid classification.

6 Colors Handle for Easy Maintenance

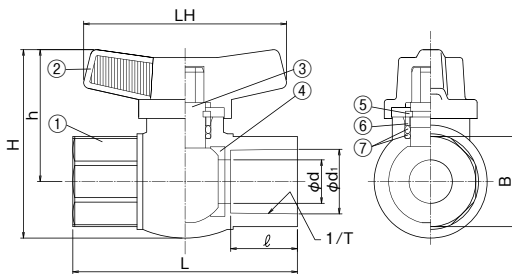


Thread Type and TS Socket Type

● Female Thread Type



● TS Socket Type



Parts List

No.	Part Name	Q'ty	Material
①	Body	1	PVC
②	Handle	1	ABS
③	Stem	1	CPVC
④	Ball Seat	2	PTFE
⑤	Retaining	1	PVDF
⑥	Collar	1	PVDF
⑦	O-ring	2	EPDMorFKM

Conforming Standard

Connection	Standard	Classification
Socket	JIS	JIS K 6743
Thread	JIS	JIS B 0203(Rc)

Size

Size		d	L	H	h	LH	B	Female Thread		TS Socket		Weight (kg/pc)		Q'ty per Carton	
A	B							Size	ℓ	d1	1/T Taper	ℓ	Thread		TS Socket
13	3/8	13	72.5	65	45.5	70	25.4	Rc 3/8	15	18.3	1/30	18.0	0.1	30	30
15	1/2	15	77.5	65	45.5	70	32.0	Rc 1/2	18	22.3	1/37	22.4	0.1	30	30
20	3/4	20	90.0	75	52.0	76	36.0	Rc 3/4	18	26.3	1/42	25.6	0.2	20	20

*Female thread dimensions conform to JIS B 0203.

Usable Liquid Temperature & Maximum Working Pressure

Material	Usable Temperature (°C)	max. Working Pressure at Room Temp (MPa)
PVC	0~50	1.0

⚠ Important Notes

- Gasifying, volatile, or evaporating fluid such as hydrogen peroxide and sodium hypochlorite might rise inner pressure of valve and burst the valve. Please contact us concerning such risk.
- Do not use for the fluid containing slurry, solid, sediment, or crystallized fluid. Or for those kinds of fluid, strainer should be used in upstream.

JIS

ESLON LOCK BALL VALVE



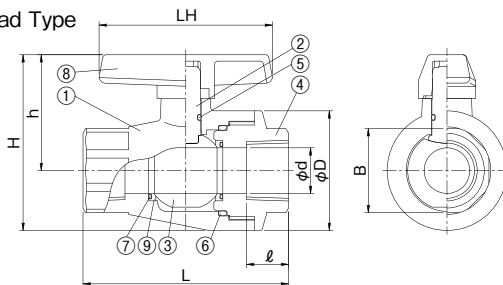
- Usable even in the condition with vibration or thermal expansion as unified body with connection end.
- Six colors of handle enable easier management of application and fluid classification.

6 Colors Handle for Easy Maintenance

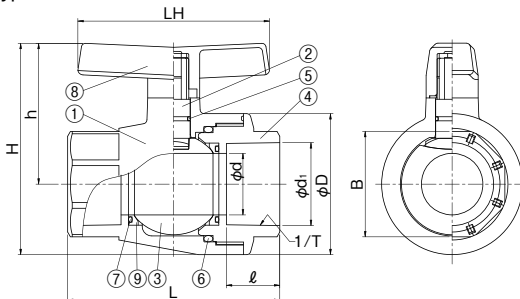


Thread Type and TS Socket Type

Female Thread Type



TS Socket Type



Parts List

No.	Part Name	Q'ty	Material
①	Body	1	PVC
②	Stem	1	PVC
③	Ball	1	PVC
④	Body Cap	1	PVC
⑤	Stem O-ring	1	EPDMorFKM
⑥	Body O-ring	1	EPDMorFKM
⑦	Back up O-ring	2	EPDMorFKM
⑧	Handle	1	ABS
⑨	Ball Seat	2	PTFE

Conforming Standard

Connection	Standard	Classification
Socket	JIS	JIS K 6743
Thread	JIS	JIS B 0203(Rc)

Size

Size		d	L	H	h	φD	ℓH	B	Female Thread		TS Socket			Weight (kg/pc)		Q'ty per Carton
A	B								Size	ℓ	d1	1/T Taper	ℓ	Thread	TS Socket	
25	1	25	113.0	96	64.0	66.0	95	46	Rc 1	23	32.3	1/43	29.0	0.3	0.3	20
32	1 1/4	29	114.0	119	82.0	74.0	110	54	Rc 1 1/4	28	38.4	1/37	32.0	0.4	0.4	12
40	1 1/2	35	130.0	133	91.0	85.0	110	65	Rc 1 1/2	30	48.5	1/38	35.0	0.6	0.6	12
50	2	45	155.0	154	103.0	103.0	140	77	Rc 2	35	60.6	1/35	39.0	1.0	1.0	12

*Female thread dimensions conform to JIS B 0203.

Usable Liquid Temperature & Maximum Working Pressure

Material	Usable Temperature (°C)	max. Working Pressure at Room Temp (MPa)
PVC	0~50	1.0

Important Notes

- Gasifying, volatile, or evaporating fluid such as hydrogen peroxide and sodium hypochlorite might rise inner pressure of valve and burst the valve. Please contact us concerning such risk.
- Do not use for the fluid containing slurry, solid, sediment, or crystallized fluid. Or for those kinds of fluid, strainer should be used in upstream.