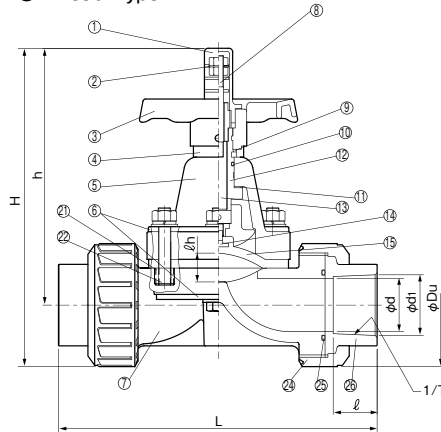


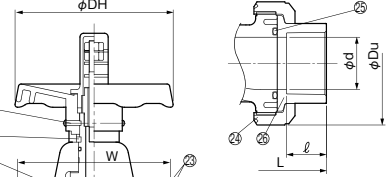
True Union Type (Thread Type · TS Socket Type and Butt Spigot Type)



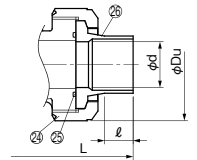
● Thread Type



● TS Socket Type



● Butt Spigot Type



Parts List

No.	Part Name	Q'ty	Material	No.	Part Name	Q'ty	Material
①	Indicator Cover	1	PC	⑮	Diaphragm	1	EPDM, PTFE, PTFE+PVDF
②	Indicator	1	SUS304	⑯	Lock Pin for 32~50A	2	SUS304
③	Handle	1	ABS	⑰	Stem Set	1	PP
④	Collar	1	PE	⑱	Lock Pin for Compressor	1	SUS304 or Ti-Pd
⑤	Bonnet	1	PVC, HT or PVDF	⑲	Metallic Fixtures for Compressor	1	C3604 or Ti-Pd
⑥	Reinforcement Plate for HT and PVDF	1	SUS304	⑳	Compressor	1	GF-PP
⑦	Body	1	PVC, HT or PVDF	㉑	Insert Nut	-	C3604, SUS304
⑧	Indicator Stud Bolt	1	SUS304	㉒	Stud Bolt	-	SUS304
⑨	Stem Packing	1	NBR	㉓	Bolt & Nut	-	SUS304
⑩	O-ring	1	NBR	㉔	Union Nut	2	PVC, HT or PVDF
⑪	Thrust Washer	1	PTFE	㉕	O-ring	2	EPDM or FKM
⑫	Stem Sleeve	1	C3604	㉖	Socket	2	PVC, HT or PVDF
⑬	Stem Spindle	1	C3604	㉗	Inserted Nut	2	C3604
⑭	Insert Bolt	EPDM	1	SS400;Cr Plated SS			
		PTFE	1	SUS304 or Ti-Pd			

- Quantity of ㉑ - ㉓ bolts & nuts differ depending on size of valve.
- ⑯ Lock pin for handle is not attached for the sizes up to 25.
- ⑥ Reinforcement plate is attached to HT, PP, and PVDF type.

⚠ Important Notes

Fluid containing slurry, solid, sediment, or crystallized fluid might disable sealing.

Size

Size		d	L			H		h		DH	W		Du		ℓh	Female Thread		TS Socket		Butt Spigot	
A	B		Thread	TS	Butt Spigot	Thread-TS Socket	Butt Spigot	Thread-TS Socket	Butt Spigot		Thread-TS Socket	Butt Spigot	Thread-TS Socket	Butt Spigot		Size	ℓ	d1	1/T Taper		ℓ
15	1/2	15	133	144	176	153	145	128	120	80	76	76	49	48	10	1/2	18	22.3	1/37	22	30
20	3/4	20	157	172	189	170	162	141	132	80	82	82	59	59	12	3/4	18	26.3	1/42	25	24
25	1	25	173	187	203	179	180	146	146	80	90	90	67	65	15	1	23	32.3	1/43	29	24
32	1 1/4	31	188	210	210	187	187	146	146	80	90	90	81	81	15	1 3/4	23	38.4	1/37	32	25
40	1 1/2	40	248	262	272	257	255	208	206	125	122	122	98	96	20	1 1/2	25	48.5	1/38	35	24
50	2	50	280	298	306	299	291	239	231	148	148	142	120	119	27	2	30	60.6	1/34	38	28

*Screw dimensions of PVDF size differ from the above. Please refer to the approval drawing.

Size		Inserted Nut		Weight (kg/pc)					Q'ty per Carton
A	B	F	M×e	PVC		HT	PVDF		
				Thread	TS	TS	Thread	Butt spigot	
15	1/2	25	M6×12	0.7	0.7	0.8	0.9	0.9	12
20	3/4	25	M6×12	0.8	0.8	1.0	1.0	1.0	12
25	1	25	M6×12	1.1	1.1	1.2	1.4	1.4	12
32	1 1/4	25	M6×12	1.2	1.2	1.3	1.6	1.5	4
40	1 1/2	45	M8×12	2.7	2.7	3.4	3.7	3.7	4
50	2	45	M8×12	3.6	3.6	4.3	5.0	5.0	4

Usable Liquid Temperature & Maximum Working Pressure

Material	Usable Temperature (°C)	max. Working Pressure at Room Temp (MPa)	
		EPDM	PTFE
PVC	0~50	1.0	1.0
HT	0~90	1.0	1.0
PVDF	0~100	1.0	1.0

Recommended Torque for Fastening Diaphragm

• Please periodically check tightening torque of the bolts for assembling diaphragm as the bolts might be loosen by temperature variation or compression set of diaphragm. Please re-tighten the bolt up to recommended torque shown in the table below in case the bolts loosen, but be careful not to over-tighten.

Size	Unit:N·m (kgf·cm)										
	15~32	40	50	65	80	100	125	150	200	250	
EPDM	8	20	25	30	35	50	60	70	80	100	
PTFE/PTFE with gas	{80}	{200}	{250}	{300}	{350}	{500}	{600}	{700}	{800}	{1000}	