

JIS

ANSI/ASTM

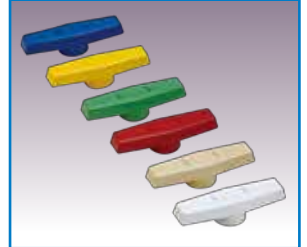
DIN/ISO

ESLON BALL VALVE



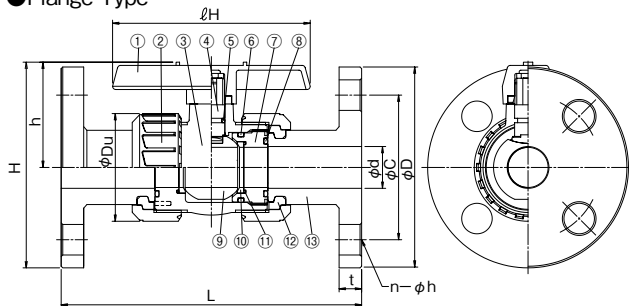
- Left hand screw on ball stopper prevents screw loose and ensures sealing of body part when union nut is loosened.
- Full port in all size. No pressure loss at full opened position by nominal size of inner diameter.
- Keep water quality by little obstructed design in flow path.
- Six colors of handle for sizes 15~50A enable easier management of application and fluid classification.

6 Colors Handle for Easy Mentence



Flange Type · Thread Type · TS Socket Type and Butt Spigot Type

● Flange Type



■ Parts List

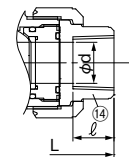
No.	Part Name	Q'ty	Material	No.	Part Name	Q'ty	Material
①	Handle	1	ABS	⑨	Ball	1	PVC, HT, PP or PVDF
②	Union Nut	2	PVC, HT, PP or PVDF	⑩	Ball Seat	2	PTFE
③	Body	1	PVC, HT, PP or PVDF	⑪	Ball Seat O-Ring	2	EPDM or FKM
④	Stem	1	PVC, HT, PP or PVDF	⑫	Set Ring	2	PVC, HT, PP or PVDF
⑤	Stem O-Ring	—	EPDM or FKM	⑬	Flange	2	PVC, HT, PP or PVDF
⑥	Ball Holder O-Ring	—	EPDM or FKM	⑭	Thread	2	PVC or PVDF
⑦	Ball Holder	—	PVC, HT, PP or PVDF	⑮	Socket	2	PVC or HT
⑧	Union O-Ring	2	EPDM or FKM	⑯	Socket	2	PVDF

*Quantity of ⑤ : 1 for 15~32A, 2 for 40~100A. *Quantity of ⑥, ⑦ : 1 for 15~50A, 2 for 65~100A.

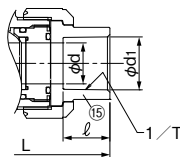
⚠ Important Notes

- Gasifying, volatile, or evaporating fluid such as hydrogen peroxide and sodium hypochlorite might rise inner pressure of valve and burst the valve. Please contact us concerning such risk. Gas relief type of customized ball valve which has relief orifice on the ball is available.
- Do not use for the fluid containing slurry, solid, sediment, or crystallized fluid. Or for those kinds of fluid, strainer should be used in upstream.

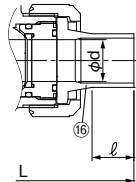
● Female Thread Type



● TS Socket Type



● Butt Spigot Type



■ Usable Liquid Temperature & Maximum Working Pressure

Material	Usable Temperature(°C)	max. Working Pressure at Room Temp.(MPa)	Material	Usable Temperature(°C)	max. Working Pressure at Room Temp.(MPa)
PVC	0~50	1.0	PP	-20~80	1.0
HT	0~90	1.0	PVDF	-20~100	1.0

■ Size

Flange Type

Size		d	L		H	h	lH	Du	Flange (JIS 10K)				Weight (kg/pc)				Q'ty per Carton
A	B		PVC, HT	PP, PVDF					phi D	phi C	n-phi h	t	PVC	HT	PP	PVDF	
15	1/2	15	143	143	98	50	95	49	95	70	4-15	14	0.4	0.4	0.3	0.5	12
20	3/4	20	172	172	103	53	95	59	100	75	4-15	14	0.6	0.6	0.4	0.7	12
25	1	25	187	187	129	66	123	67	125	90	4-19	14	0.9	0.9	0.5	1.0	12
32	1 1/4	30	190	190	142	74	123	81	135	100	4-19	16	1.2	1.2	0.7	1.3	12
40	1 1/2	40	212	212	170	100	152	98	140	105	4-19	16	1.7	1.7	1.1	1.9	2
50	2	50	234	234	185	107	152	120	155	120	4-19	20	2.6	2.6	1.6	3.0	2
65	2 1/2	65	259	257	222	146	188	150	175	140	4-19	22	4.2	4.3	2.8	5.0	2
80	3	80	304	304	262	169	230	186	185	150	8-19	22	6.7	6.9	4.4	8.2	2
100	4	100	372	367	317	203	283	228	210	175	8-19	24	11.5	11.9	7.4	14.1	1

Thread Type · TS Socket Type and Butt Spigot Type

Size		d	L		H	h	lH	Du	Female Thread		TS Socket		Butt Spigot	Weight (kg/pc)			Q'ty per Carton				
A	B		Thread	TS					Size	Size	d1	1/T	l	l	PVC	HT		PVDF			
				PVDF																	
				Thread	Butt									Thread/TS Socket	TS	Thread/Butt					
15	1/2	15	97	109	99	143	75	50	95	49	Rc 1/2	18	20	22.3	1/37	22	30	0.2	0.2	0.2	24
20	3/4	20	117	132	116	152	82	53	95	59	Rc 3/4	18	22	26.3	1/42	25	24	0.3	0.3	0.3	24
25	1	25	128	143	136	161	100	66	123	67	Rc 1	23	24	32.3	1/43	29	24	0.4	0.4	0.5	24
32	1 1/4	32	146	166	148	167	115	74	123	81	Rc 1 1/4	23	25	38.4	1/37	32	25	0.6	0.6	0.6	24
40	1 1/2	40	163	175	169	190	149	100	152	98	Rc 1 1/2	25	28	48.5	1/38	35	24	1.1	1.1	1.2	4
50	2	50	188	203	196	216	167	107	152	120	Rc 2	30	30	60.6	1/34	38	28	1.6	1.7	1.9	4
65	2 1/2	65	227	259	227	208	221	146	188	150	Rc 2 1/2	32	32	76.6	1/48	61	23	3.0	3.3	3.6	2
80	3	80	278	311	278	301	262	169	230	186	Rc 3	37	37	89.6	1/49	64	45	5.6	6.1	7.0	1
100	4	100	330	390	330	340	317	203	283	228	Rc 4	45	45	114.7	1/56	84	43	10.5	11.2	12.5	1

*H, h, Du, and t dimension of PP/PVDF type might differ from the dimension table.