

JIS

ANSI/ASTM

DIN/ISO

ESLON CHECK VALVE BALL TYPE



TS Socket Type
Thread Type

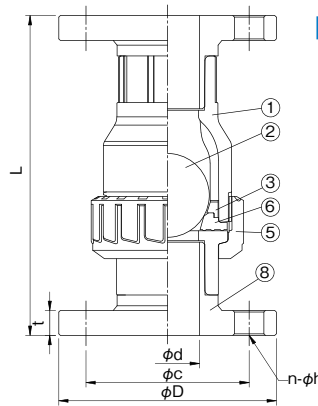
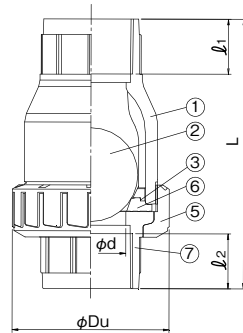
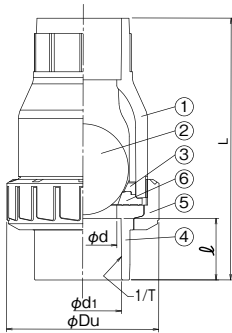
Flange Type

- Low pressure loss and reliable checking performance even with small differential pressure.
- Superior corrosion & chemical resistance as all plastic component for contact parts with medium.
- Easy maintenance by detaching union nut.

● TS Socket Type

● Thread Type

● Flange Type



Parts List

No.	Part Name	Q'ty	Material
①	Body	1	PVC or HT
②	Ball	1	PVC or HT
③	Ring	1	PVC or HT
④	TS Socket	1	PVC or HT
⑤	Union Nut	1	PVC or HT
⑥	Seat	1	EPDM or FKM
⑦	Thread	1	PVC
⑧	Flange	1	PVC or HT

Size

Thread Type and TS Socket Type

Size		L			TS Socket			Female Thread			Flange				φDu	Weight(kg/pc)				Q'ty per Carton		
A	B	d	TS	Thread	Flange	d1	1/T Taper	ℓ	Size	ℓ1	ℓ2	D	C	n-φh		t	PVC		HT		TS-Thread	Flange
																	TS-Thread	Flange	TS	Flange	TS-Thread	Flange
15	1/2	16	98	88	135	22.3	1/37	22	Rc1/2	18	18	95	70	4-15	14	49	0.1	0.5	0.1	0.5	24	1
20	3/4	20	118	106	160	26.3	1/42	25	Rc3/4	21	18	100	75	4-15	14	59	0.2	0.6	0.2	0.6	24	1
25	1	25	124	112	170	32.3	1/43	29	Rc 1	24	23	125	90	4-19	14	67	0.3	1.0	0.3	1.0	24	1
32	1 1/4	32	153	149	205	38.4	1/37	32	Rc1-1/4	30	31	135	100	4-19	16	98	0.6	1.6	0.6	1.6	4	1
40	1 1/2	40	153	144	205	48.5	1/38	35	Rc1-1/2	31	25	140	105	4-19	16	98	0.5	1.6	0.5	1.6	4	1
50	2	50	180	172	230	60.6	1/34	38	Rc 2	38	30	155	120	4-19	20	120	0.8	2.4	0.8	2.4	4	1
65	2 1/2	65	259	226	398	76.6	1/48	61	Rc2-1/2	44	32	175	140	4-19	22	150	2.2	4.6	2.2	4.6	2	1
80	3	78	281	251	425	89.6	1/49	64	Rc 3	37	37	185	150	8-19	22	150	2.4	5.0	2.5	5.0	2	1
100	4	102	408	349	592	114.7	1/56	84	Rc 4	55	45	210	175	8-19	24	228	6.8	13.0	6.8	13.0	1	1

Unit:mm

Minimum Operating Pressure

Size (A)		15	20	25	32	40	50	65	80	100
Vertical Piping	Min.Opened Pressure	5			10			50		
	Min.Closed Pressure	1			2			50		
Horizontal Piping	Min.Opened Pressure	1			2			50		
	Min.Closed Pressure	30			50			50		

Unit:kPa

*The pressure in the above table has tolerance.

Important Notes

- In the condition of low flow rate or frequent flow rate fluctuation, the ball might vibrate in the body, and might cause sound or damage of valve. Eslon check valve swing type or lift type may be usable in those cases.
- Turbulent flow might disable checking by irregular ball bouncing.
- Fluid containing slurry, solid, sediment, or crystallized fluid might disable checking and sealing.

Usable Liquid Temperature & Maximum Working Pressure

Material	Usable Temperature(°C)	Max. Working Pressure at Room Temp(MPa)
PVC	0~50	1.0
HT	0~90	1.0

Conforming Standard

Connection	Standard	Classification
Socket	JIS	JIS K 6743, AS21(65A)
	ASTM	ASTM D2467
	DIN/ISO	DIN8063
Thread	JIS	JIS B 0203(Rc)
	ANSI	ANSI B1.20.1(NPT)
	DIN/ISO	DIN2999(Rc-Rp)