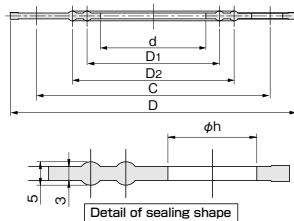


PACKING (GASKET)

● EPDM PACKING



● Durometer Hardness 70 \pm 5 $^{\circ}$ C

- Excellent chlorinated water & chemical resistance. Usable for water including residual chlorine.
※Eslon IIR-X Packing is recommendable for high concentration of sodium hypochlorite.
- Usable maximum temperature is 100 $^{\circ}$ C. Available for hot water piping ※Usable maximum temperature of water supply type is 60 $^{\circ}$ C.
- Excellent sealing performance with double rib even by low bolt-tightening torque.

■ Size EPDM (JIS 10K)

Size		d	D1	D2	C	D	n-φ	Weight g/pc	Recommended Fasten Torque N·m
A	B								
13	3/8	17	25	38	65	88	4-15	20	15
15	1/2	20	28	42	70	93	4-15	23	15
20	3/4	25	33	47	75	98	4-15	29	15
25	1	30	38	53	90	123	4-19	40	30
30	1 1/4	38	48	63	100	133	4-19	46	30
40	1 1/2	46	54	69	105	138	4-19	50	30
50	2	58	68	83	120	153	4-19	55	30
65	2 1/2	73	86	101	140	173	4-19	75	45
80	3	84	98	113	150	183	8-19	77	45
100	4	106	120	138	175	208	8-19	95	45
125	5	131	145	168	210	248	8-23	115	55
150	6	155	170	196	240	278	8-23	145	55
200	8	204	218	248	290	328	12-23	185	55
250	10	254	270	306	355	398	12-25	250	65
300	12	304	324	356	400	443	16-25	278	65
350	14	352	368	400	445	488	16-25	290	65

EPDM (JIS 5K)

Size		d	D1	D2	C	D	n-φ	Weight g/pc	Recommended Fasten Torque N·m
A	B								
13	3/8	17	24	36	55	73	4-12	17	15
15	1/2	20	28	40	60	78	4-12	19	15
20	3/4	25	33	45	65	83	4-12	21	15
25	1	30	38	52	75	93	4-12	25	30
30	1 1/4	38	46	61	90	113	4-15	34	30
40	1 1/2	46	54	68	95	118	4-15	37	30
50	2	58	66	80	105	128	4-15	41	30
65	2 1/2	73	82	100	130	153	4-15	56	45
80	3	84	94	113	145	178	4-19	69	45
100	4	106	116	135	165	198	8-19	78	45
125	5	131	142	164	200	233	8-19	103	55
150	6	155	168	190	230	263	8-19	124	55
200	8	204	220	243	280	318	8-23	167	55
250	10	254	270	300	345	383	12-23	220	65

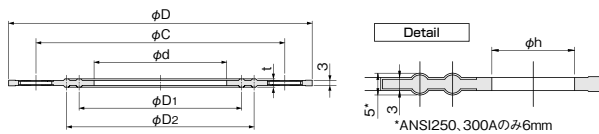
EPDM (Water Supply)

Size		d	D1	D2	C	D	n-φ	Weight g/pc	Recommended Fasten Torque N·m
A	B								
50	2	58	68	83	120	153	4-19	55	30
75	3	84	98	115	168	211	4-19	100	45
100	4	106	120	140	195	238	4-19	120	45
125	5	131	145	168	220	263	6-19	130	55
150	6	155	175	195	247	290	6-19	150	55
200	8	205	226	248	299	342	8-19	200	65
250	10	254	276	300	360	410	8-23	250	65
300	12	305	328	350	414	464	10-23	290	65

EPDM (ANSI)

Size		d	D1	D2	C	D	n-φ	Weight g/pc	Recommended Fasten Torque N·m
A	B								
15	1/2	18	25	38	60.5	86	4-16	17	14
20	3/4	23	33	48	70.1	97	4-16	21	14
25	1	30	38	53	79.5	107	4-16	25	20
32	1 1/4	38	51	66	88.9	114	4-16	29	20
40	1 1/2	43	53	69	98.6	124	4-16	34	20
50	2	53	69	84	120.7	150	4-19	49	34
65	2 1/2	69	86	102	139.7	175	4-19	66	34
80	3	81	99	112	152.4	188	4-19	74	41
100	4	102	119	137	190.5	226	8-19	101	41
125	5	127	145	165	215.9	251	8-22	117	55
150	6	149	168	191	241.3	277	8-22	134	68
200	8	198	216	246	298.5	340	8-22	192	68
250	10	249	269	307	362.0	404	12-25	246	89
300	12	300	325	353	431.8	480	12-25	356	102

● PTFE PACKING



*ANSI250, 300Aのみ6mm

- Excellent corrosion and chemical resistance by PTFE laminated EPDM backing.
- Reliable sealing performance with double rib.

■ Size PTFE (JIS 10K)

Size		d	D1	D2	C	D	n-φ	Weight g/pc	Recommended Fasten Torque N·m
A	B								
13	3/8	14	23	37	65	88	4-15	23	16
15	1/2	18	26	41	70	93	4-15	25	16
20	3/4	22	36	46	75	98	4-15	32	16
25	1	28	38	53	90	123	4-19	46	35
30	1 1/4	37	50	65	100	133	4-19	51	35
40	1 1/2	43	54	69	105	138	4-19	57	35
50	2	54	68	83	120	153	4-19	63	35
65	2 1/2	69	86	101	140	173	4-19	84	52
80	3	80	98	113	150	183	8-19	88	52
100	4	102	120	138	175	208	8-19	105	52
125	5	127	145	168	210	248	8-23	130	63
150	6	150	168	190	240	278	8-23	160	63
200	8	198	216	248	290	328	12-23	200	63
250	10	250	270	306	355	398	12-25	290	75
300	14	300	324	356	400	443	16-25	340	75

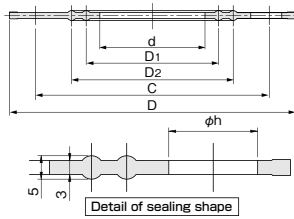
PTFE (ANSI)

Size		d	D1	D2	C	D	n-φ	Weight g/pc	Recommended Fasten Torque N·m
A	B								
15	1/2	18	30	—	60.3	85	4-16	22	16
20	3/4	22	32	44	69.9	95	4-16	29	16
25	1	29	38	50	79.4	103	4-16	34	35
32	1 1/4	39	47	59	88.9	111	4-16	39	35
40	1 1/2	44	53	68	98.4	121	4-16	44	35
50	2	55	65	83	120.7	146	4-19	65	35
65	2 1/2	70	81	101	139.7	173	4-19	84	52
80	3	81	94	112	152.4	186	4-19	98	52
100	4	103	124	148	190.5	223	8-19	137	52
125	5	128	150	174	215.9	249	8-22	153	68
150	6	152	172	196	241.3	274	8-22	182	68
200	8	200	222	246	298.5	337	8-22	258	68
250	10	251	276	300	362.0	401	12-25	348	102
300	12	302	335	365	431.8	477	12-25	484	136

⚠ Important Notes

- Eslon Packing is usable for Flat Face Flange. Do not use for Raised Face Flange or Lining pipe with flange.
- Tighten bolts diagonally, evenly, and gradually.
Recommended tightening torque for bolts is referred in dimension table.
- Support pipe line by proper method not to load excess stress at flange to prevent leakage by deformation of packing.

●FKM PACKING



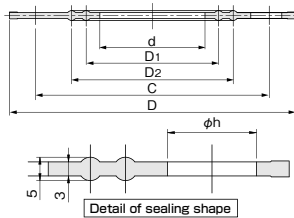
●Durometer Hardness 70 \pm 5 $^{\circ}$ C

- Excellent chemical, oil, high temperature resistance.
- Excellent sealing performance with double rib even by low bolt-tightening torque.

■ Size FKM (JIS 10K)

Size		d	D1	D2	C	D	n- ϕ h	Tighten Torque N·m
A	B							
15	1/2	20	28	42	70	93	4- ϕ 15	15
20	3/4	25	33	47	75	98	4- ϕ 15	15
25	1	30	38	53	90	123	4- ϕ 19	30
30	1-1/4	38	48	63	100	133	4- ϕ 19	30
40	1-1/2	46	54	69	105	138	4- ϕ 19	30
50	2	58	68	83	120	153	4- ϕ 19	30
65	2-1/2	73	86	101	140	173	4- ϕ 19	45
80	3	84	98	113	150	183	8- ϕ 19	45
100	4	106	120	138	175	208	8- ϕ 19	45
125	5	131	145	168	210	248	8- ϕ 23	55
150	6	155	170	196	240	278	8- ϕ 23	55
200	8	204	218	248	290	328	12- ϕ 23	55
250	10	254	270	306	355	398	12- ϕ 25	65
300	12	304	324	356	400	443	16- ϕ 25	65

●FKM-FB PACKING



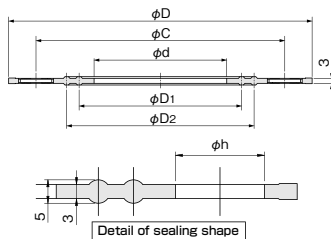
●Durometer Hardness 70 \pm 5 $^{\circ}$ C

- Excellent strong acid resistance such as hydrochloric acid or sulfuric acid.
- Excellent chemical, oil, high temperature resistance.
- Excellent sealing performance with double rib even by low bolt-tightening torque.

■ Size FKM-FB (JIS 10K)

Size		d	D1	D2	C	D	n- ϕ h	Tighten Torque N·m
A	B							
15	1/2	20	28	42	70	93	4- ϕ 15	15
20	3/4	25	33	47	75	98	4- ϕ 15	15
25	1	30	38	53	90	123	4- ϕ 19	30
30	1-1/4	38	48	63	100	133	4- ϕ 19	30
40	1-1/2	46	54	69	105	138	4- ϕ 19	30
50	2	58	68	83	120	153	4- ϕ 19	30
65	2-1/2	73	86	101	140	173	4- ϕ 19	45
80	3	84	98	113	150	183	8- ϕ 19	45
100	4	106	120	138	175	208	8- ϕ 19	45
125	5	131	145	168	210	248	8- ϕ 23	55
150	6	155	170	196	240	278	8- ϕ 23	55
200	8	204	218	248	290	328	12- ϕ 23	55
250	10	254	270	306	355	398	12- ϕ 25	65
300	12	304	324	356	400	443	16- ϕ 25	65

●IIR-X PACKING (For Sodium hypochlorite)



●Durometer Hardness 70 \pm 5 $^{\circ}$ C

- Excellent resistance against sodium hypochlorite.
- Excellent sealing performance with double rib even by low bolt-tightening torque.

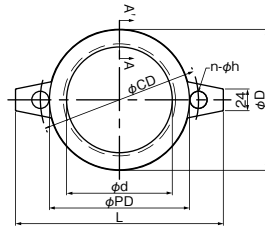
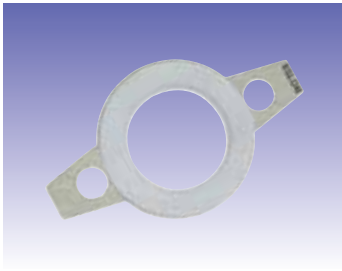
■ Size IIR-X (JIS 10K)

Size		d	D1	D2	C	D	n- ϕ h	Weight g/pc	Recommended Fasten Torque N·m
A	B								
13	3/8	14	23	37	65	88	4-15	20	15
15	1/2	18	26	41	70	93	4-15	23	15
20	3/4	22	32	47	75	98	4-15	29	15
25	1	28	38	53	90	123	4-19	40	30
30	1 1/4	37	50	65	100	133	4-19	46	30
40	1 1/2	43	54	69	105	138	4-19	50	30
50	2	54	68	83	120	153	4-19	55	30
65	2 1/2	69	86	101	140	173	4-19	75	45
80	3	80	98	113	150	183	8-19	77	45
100	4	102	120	138	175	208	8-19	95	45
125	5	127	145	168	210	248	8-23	115	55
150	6	150	168	190	240	278	8-23	145	55
200	8	198	216	248	290	328	12-23	185	55
250	10	250	270	306	355	398	12-25	250	65

⚠ Important Notes

- Eslon Packing is usable for Flat Face Flange. Do not use for Raised Face Flange or Lining pipe with flange.
- Tighten bolts diagonally, evenly, and gradually. Recommended tightening torque for bolts is referred in dimension table.
- Support pipe line by proper method not to load excess stress at flange to prevent leakage by deformation of packing.

● RAISED FACE PACKING



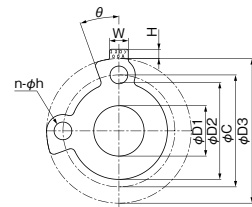
- PTFE-clad gasket mainly consisting expanded graphite and aramid fibers. Excellent mechanical property and heat resistance.
- Tab with bolt hole enable easy alignment in installation.
- Usable for Raised face flange, Lining piping, and stainless steel piping.

■ Size For Raised face (JIS 10K)

Unit:mm

Size		PTFE		Gasket				t	n-φh
A	B	d	PD	CD	D	L	Thickness		
20	3/4	28	59	75	60	120	2	2.8	2-φ15
25	1	35	70	90	71	145	2	2.8	2-φ19
30	1-1/4	43	79	100	81	155	2	2.8	2-φ19
40	1-1/2	49	84	105	86	160	2	2.8	2-φ19
50	2	62	99	120	101	175	2	2.8	2-φ19
65	2-1/2	78	119	140	121	195	2	2.8	2-φ19
80	3	91	129	150	131	205	2	2.8	2-φ19
100	4	117	155	175	156	230	2	2.8	2-φ19
125	5	144	185	210	187	270	2	2.8	2-φ23
150	6	171	215	240	217	300	2	2.8	2-φ23
200	8	219	265	290	267	350	2	2.8	2-φ23
250	10	271	321	355	330	420	2	2.8	2-φ25
300	12	321	370	400	375	465	2	2.8	2-φ25
350	14	356	415	445	420	510	2	2.8	2-φ25
400	16	407	471	510	483	580	2	2.8	2-φ27

● TRIGUARD PTFE PACKING



- Excellent sealing performance with special cell structure even by low bolt-tightening torque.
- Low elution and excellent chemical resistance as composed from 100% PTFE.
- Wide range of usable temperature, -240°C~+315°C
- Not contain foaming agent, fillers, nor adhesive.
- Usable for Lining piping and stainless steel piping.

■ Size JIS 10K

Unit:mm

Size	D1	D2	C	D3	H	W	θ	n-φh	Tighten Torque N·m
15	18	58	70	95	10	20	25°	2×15	14
20	22	63	75	100	10	20	23°	2×15	14
25	28	74	90	125	10	20	27°	2×19	29
30	37	84	100	135	10	20	24°	2×19	29
40	43	89	105	140	10	20	23°	2×19	29
※50	54	104	120	155	10	20	20°	2×19	29
65	69	124	140	175	10	20	17°	2×19	44
80	80	134	150	185	10	20	16°	2×19	44
100	102	159	175	210	10	20	14°	2×19	44
※125	127	190	210	250	10	20	13°	2×23	54
150	150	220	240	280	10	20	12°	2×23	54
※200	198	270	290	330	10	20	10°	2×23	54

JPI Class 150

Unit:mm

Size	D1	D2	C	D3	H	W	θ	n-φh	Tighten Torque N·m
50	61	104	120.6	152	10	20	20°	2×20	29
125	143	196	215.9	254	10	20	13°	2×23	54
200	220	277	298.4	343	10	20	10°	2×23	54

- 1.Flange dimension conform to JIS 10K: JIS B 2210 or JPI Class: JPI-7S-15.
- 2.JPI Class of TriGuard gasket with *mark adopts for 50A, 125A, and 200A of PVDF piping.
- 3.Thickness: 3mm

⚠ Important Notes

Tighten evenly bolts with specified recommended torque in dimension table. In case unable to measure torque, tighten evenly bolts so that thickness of TriGuard after tightening is 1/3 of original thickness.