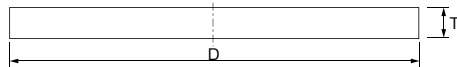


BLIND FLANGE

① SP Type (Blind Flange)

JIS10K Material : PVC

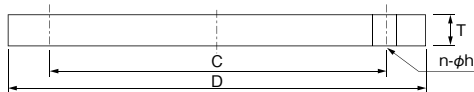
JIS5K Material : PVC



② SB Type (Blind Flange)

JIS10K Material : PVC, HI, HT

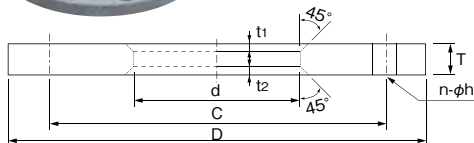
JIS5K Material : PVC



③ SJ Type (For Welding)

JIS10K Material : PVC

JIS5K Material : PVC



Size

JIS10K Material : PVC, HI, HT

Unit:mm

Size		D	C	d	T	t1	t2	n-φh	Applicable Bolt	Weight(PVC)kg/pc			
A	B									SP	SB	SJ	
13	3/8	90	65	18	12	1.5	3	4-15	M12	50	0.11	0.10	0.10
15	1/2	95	70	22	12	1.5	3	4-15	M12	50	0.13	0.11	0.11
20	3/4	100	75	26	14	1.5	3	4-15	M12	50	0.16	0.15	0.14
25	1	125	90	32	14	1.5	3	4-19	M16	55	0.25	0.23	0.21
32	1 1/4	135	100	38	16	2.5	3	4-19	M16	60	0.34	0.31	0.28
40	1 1/2	140	105	48	16	2.5	3	4-19	M16	60	0.36	0.34	0.29
50	2	155	120	60	16	2.5	4	4-19	M16	70	0.44	0.42	0.35
65	2 1/2	175	140	76	18	2.5	4	4-19	M16	75	0.64	0.61	0.49
80	3	185	150	89	18	2.5	4	8-19	M16	75	0.71	0.65	0.49
100	4	210	175	114	18	3	4	8-19	M16	80	0.92	0.86	0.59
125	5	250	210	140	20	4	4	8-23	M20	80	1.44	1.35	0.89
150	6	280	240	165	22	4	4	8-23	M20	85	1.99	1.88	1.19
200	8	330	290	216	22	4	4	12-23	M20	90	2.77	2.61	1.42
250	10	400	355	267	24	4	4	12-25	M22	95	4.31	3.98	2.19
300	12	445	400	321	24	4	4	16-25	M22	95	5.34	4.84	2.29

Material	Maximum Working Pressure(20°C)	Temperature
PVC	13A~150A:1.0MPa, 200A:0.6MPa, 250A·300A:0.5MPa	60°C
HI	15A~100A:1.0MPa, 125~150A:0.8MPa, 200A:0.5MPa, 250A:0.4MPa, 300A:0.3MPa	60°C
HT	15A~150A:1.0MPa, 200A:0.6MPa, 250A·300A:0.5MPa	90°C

JIS5K Material : PVC

Unit:mm

Size		D	C	d	T	t1	t2	n-φh	Applicable Bolt	Weight(PVC)kg/pc			
A	B									SP	SB	SJ	
13	3/8	75	55	18	9	1.5	3	4-12	M10	45	0.06	0.05	0.05
15	1/2	80	60	22	9	1.5	3	4-12	M10	45	0.07	0.06	0.06
20	3/4	85	65	26	10	1.5	3	4-12	M10	45	0.08	0.08	0.07
25	1	95	75	32	10	1.5	3	4-12	M10	45	0.10	0.10	0.09
32	1 1/4	115	90	38	12	2.5	3	4-15	M12	50	0.18	0.17	0.15
40	1 1/2	120	95	48	12	2.5	3	4-15	M12	50	0.20	0.19	0.16
50	2	130	105	60	14	2.5	4	4-15	M12	55	0.27	0.26	0.20
65	2 1/2	155	130	76	14	2.5	4	4-15	M12	55	0.39	0.37	0.28
80	3	180	145	89	14	2.5	4	4-19	M16	55	0.52	0.50	0.37
100	4	200	165	114	16	3	4	8-19	M16	60	0.74	0.66	0.45
125	5	235	200	140	16	4	4	8-19	M16	60	1.02	0.92	0.61
150	6	265	230	165	18	4	4	8-19	M16	65	1.46	1.33	0.83
200	8	320	280	216	20	4	4	8-23	M20	90	2.36	2.14	1.19
250	10	385	345	267	22	4	4	12-23	M20	95	3.66	3.39	1.74
300	12	430	390	321	22	4	4	12-23	M20	95	4.57	4.21	1.86

*Usable maximum temperature is 60°C for PVC Flange.