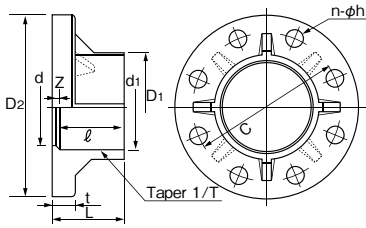
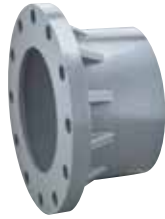


PRODUCTS RELATED TO VALVE

ESLON FLANGE WITH TS SOCKET (TS FLANGE)



Size

JIS 10K Material : PVC · HT and HI

Unit:mm

Size		TS Socket				L	Z	d	Flange					Weight (PVC) kg/pc	
A	B	d1	ℓ	1/T	D1				C	D2	t	n-φh	Applicable Bolt		
13	3/8	18.4	26	1/30	26	31	5	14	65	90	14	4-15	M12	50	0.12
15	1/2	22.4	30	1/34	31	35	5	17	70	95	14	4-15	M12	50	0.13
20	3/4	26.5	35	1/34	35	40	5	21	75	100	14	4-15	M12	50	0.15
25	1	32.6	40	1/34	42	45	5	25	90	125	14	4-19	M16	55	0.24
32	1 1/4	38.6	44	1/34	48	50	6	31	100	135	16	4-19	M16	60	0.31
40	1 1/2	48.7	55	1/37	61	61	6	41	105	140	16	4-19	M16	60	0.36
50	2	60.8	63	1/37	73	70	7	52	120	155	20	4-19	M16	70	0.52
65	2 1/2	76.6	61	1/48	88	70	9	67	140	175	22	4-19	M16	75	0.71
80	3	89.6	64	1/49	102	72	8	78	150	185	22	8-19	M16	75	0.75
100	4	114.7	84	1/56	132	90	8	100	175	210	22	8-19	M16	75	1.14
125	5	140.9	104	1/58	158	114	10	125	210	250	24	8-23	M20	80	1.67
150	6	166.0	132	1/63	186	142	10	146	240	280	26	8-23	M20	85	2.53
200	8	217.5	155	1/50	238	166	11	196	290	330	28	12-23	M20	90	3.62
250	10	268.8	185	1/50	289	198	13	247	355	400	30	12-25	M22	95	5.48
300	12	319.0	185	1/57	344	203	18	298	400	445	32	16-25	M22	100	7.80

·Flange dimensions conform to JIS B2220.

·TS socket dimensions conform to JIS K 6743.

·Usable maximum temperature is 60°C for PVC Flange.

JIS 5K Material : PVC and HT

Unit:mm

Size		TS Socket				L	Z	d	Flange					Weight (PVC) kg/pc	
A	B	d1	ℓ	1/T	D1				C	D2	t	n-φh	Applicable Bolt		
13	3/8	18.4	26	1/30	26	31	5	14	55	75	9	4-12	M10	45	0.05
15	1/2	22.4	30	1/34	31	35	5	17	60	80	9	4-12	M10	45	0.06
20	3/4	26.5	35	1/34	35	40	5	21	65	85	10	4-12	M10	45	0.08
25	1	32.6	40	1/34	42	45	5	25	75	95	10	4-12	M10	45	0.11
32	1 1/4	38.6	44	1/34	48	50	6	31	90	115	12	4-15	M12	50	0.20
40	1 1/2	48.7	55	1/37	61	61	6	41	95	120	12	4-15	M12	50	0.25
50	2	60.8	63	1/37	73	70	7	52	105	130	14	4-15	M12	55	0.31
65	2 1/2	76.6	61	1/48	88	70	9	67	130	155	14	4-15	M12	55	0.43
80	3	89.6	64	1/49	102	72	8	78	145	180	14	4-19	M16	55	0.59
100	4	114.7	84	1/56	132	92	8	100	165	200	16	8-19	M16	60	0.91
125	5	140.9	104	1/58	158	114	10	125	200	235	16	8-19	M16	60	1.29
150	6	166.0	132	1/63	186	142	10	146	230	265	18	8-19	M16	65	2.05
200	8	217.5	155	1/50	238	166	11	196	280	320	28	8-23	M20	90	3.43
250	10	268.8	185	1/50	289	198	13	247	345	385	30	12-23	M20	95	5.19

·Flange dimensions conform to JIS B2220.

·TS socket dimensions conform to JIS K 6743.

·Usable maximum temperature is 60°C for PVC Flange.

·HT Flange : Available 13-50A

ANSI Material : PVC · HT and HI

Unit:mm

Size		TS Socket				L	Z	d	Flange				Weight (PVC) kg/pc
A	B	d1	ℓ	1/T	D1				C	D2	t	n-φh	
15	1/2	22.4	30	1/34	31	35	5	17	60.5	89	14	4-16	0.13
20	3/4	26.5	35	1/34	35	40	5	21	70	98.6	14	4-16	0.15
25	1	32.6	40	1/34	42	45	5	25	79.5	108	14	4-16	0.24
32	1 1/4	38.6	44	1/34	48	50	6	31	89	117.5	16	4-16	0.31
40	1 1/2	48.7	55	1/37	61	61	6	41	98.5	127	16	4-16	0.36
50	2	60.8	63	1/37	73	70	7	52	120.5	155	20	4-20	0.52
65	2 1/2	76.6	61	1/48	88	70	9	67	139.5	175	22	4-20	0.71
80	3	89.6	64	1/49	102	72	8	78	152.5	190.5	22	4-20	0.89
100	4	114.7	84	1/56	132	90	6	100	190.5	229	22	4-20	1.65
125	5	140.9	104	1/58	158	114	10	125	216	250	24	8-22	1.67
150	6	166.0	132	1/63	186	142	10	146	241.5	280	26	8-22	2.53
200	8	217.5	155	1/50	238	166	11	196	298.5	343	28	8-22	4.39
250	10	268.8	185	1/50	289	198	13	247	362	406	30	12-26	5.48
300	12	319.0	185	1/57	344	203	18	298	432	483	32	12-26	7.80

·TS socket dimensions conform to JIS K 6743.

·Flange dimensions conform to ANSI B16.5-1981 class 150.

Water Supply Type Material : PVC

Unit:mm

Size		TS Socket				L	Z	d	Flange					Weight kg/pc	
A	B	d1	ℓ	1/T	D1				C	D2	t	n-φh	Applicable Bolt		
75	3	89.6	64	1/49	102	72	8	78	168	211	22	4-19	M16	75	1.13
100	4	114.7	84	1/56	132	90	8	100	195	238	24	4-19	M16	80	1.65
125	5	140.9	104	1/58	158	114	10	125	220	263	24	6-19	M16	80	2.09
150	6	166.0	132	1/63	186	142	10	146	247	290	26	6-19	M16	85	2.87
200	8	217.5	155	1/50	238	166	11	196	299	342	28	8-19	M16	90	4.39
250	10	268.8	185	1/50	289	198	13	247	360	410	30	8-23	M20	95	6.25
300	12	319.0	185	1/57	344	203	18	298	414	464	32	10-23	M20	100	8.60

·TS socket dimensions conform to JIS K 6743.

·Flange dimensions conform to JWWA G113-114.