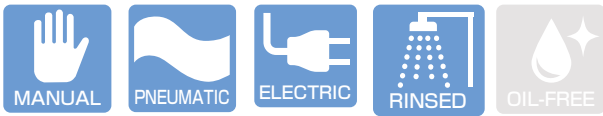




JIS ANSI/ASME DIN



Operating Temperature(°C)

PVC	0 ~ 50
PP	0 ~ 80
PVDF	0 ~ 120

ESLON ELECTRIC BUTTERFLY VALVE TYPE N

Feature

- Light weight and compact of actuator with aluminum die-cast housing.
- Excellent chemical and corrosion resistance.
- High speed of open-close operation for smaller sizes, easy flow control and water hammer prevention by slow action for larger sizes.

⚠ Important Notes

- Gasifying, volatile, or evaporating fluid such as hydrogen peroxide and sodium hypochlorite might rise inner pressure of valve and burst the valve. Please contact us concerning such risk. Gas relief type of customized ball valve which has relief orifice on the ball is available.
- Do not use for the fluid containing slurry, solid, sediment, or crystallized fluid. Or for those kinds of fluid, strainer should be used in upstream.

Specification of Actuator

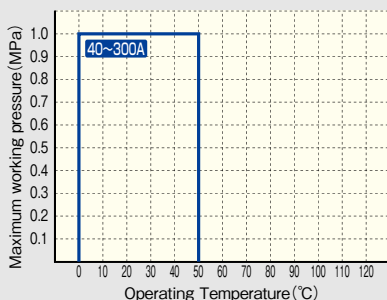
Nominal diameter(A)	40~100A	125~200A	250-300A
Input system	Power switching system		
Contact output	Power supply voltage		
Operating voltage	Single-phase AC100/110,200/220V(50/60Hz)		
Motor	Type	DC Motor	
	Time rating	15 minutes rating under loading rate 20%	
Protect	Thermistor type		
Power consumption	100VA max.	150VA max.	120VA max.
Manual operation	Drive shaft dired operation	Drive shaft manipulation	
Connector type	G1/2 wire connector (φ6-12 Cabtire cable)		
Material	ADC Resin Coating		
Protection	IP65		
Condensation prevention	Built-in space heater		

Time For Open-Close (50/60Hz)

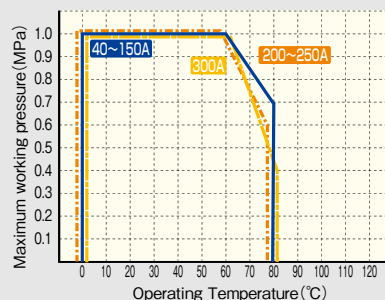
Size (A)	Time(Sec.)
40-65A	3 ~ 4
80-100A	6 ~ 10
125-200A	8 ~ 15
250-300A	24 ~ 45

Maximum Working Pressure - Temperature Rating

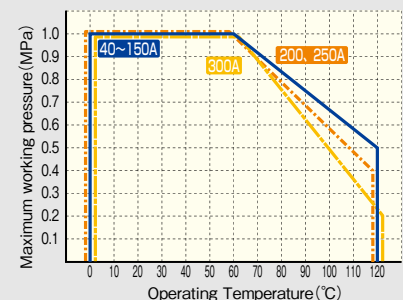
Body material : PVC



Body material : PP



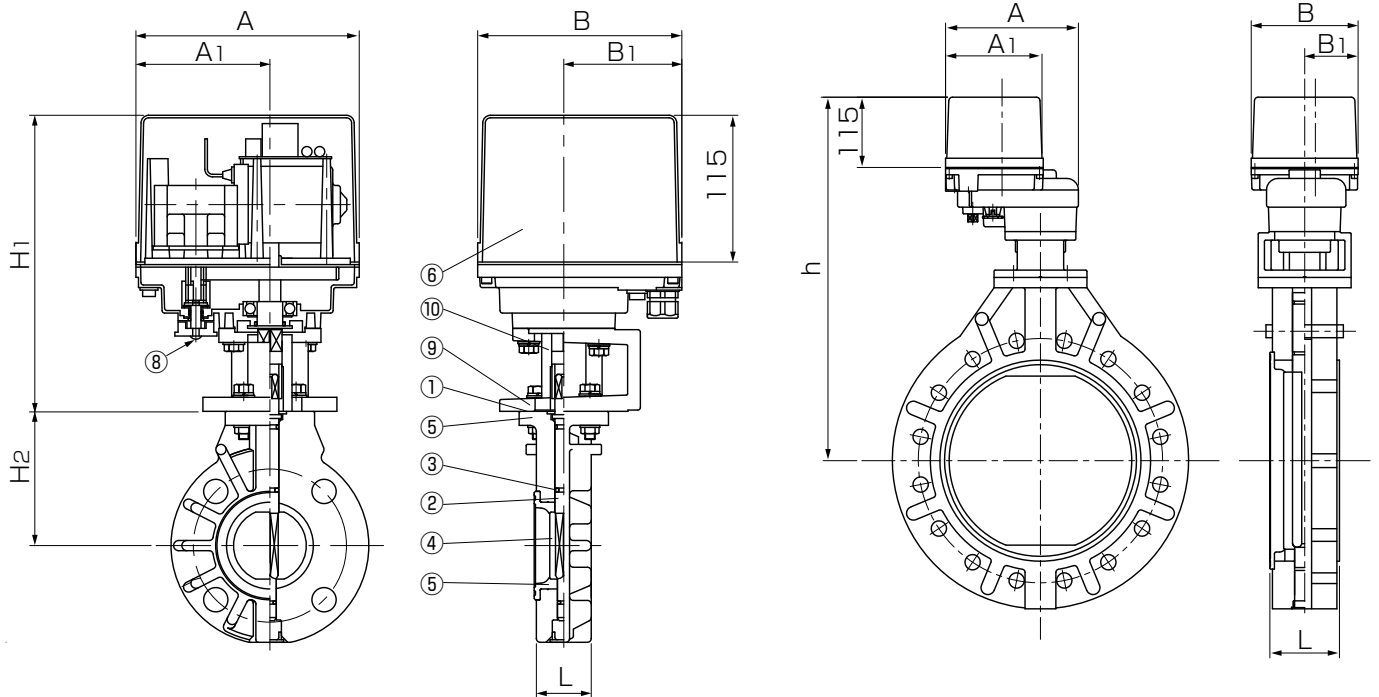
Body material : PVDF



Figure

(40A~200A)

(250~300A)



Parts List

No.	Part Name	QTY	Material / Type
1	Body	1	Body/Disc ● PVC/PP ● PP/PP ● PVDF/PVDF
2	Disc	1	● SUS420J2 ● SUS316
3	Shaft	1	● EPDM ● FKM
4	Seat Ring	1	ADC12
5	O-Ring	3	PA, G1/2
6	Actuator	1	—
7	Electric Conduit Gland	1	AC4A
8	Manual Handle	1	S45C+Ni Coated
9	Yoke	1	
10	Connector	1	

Option

- No-voltage limit switch
- Space heater(Standard)

Size

Unit : mm

Size		L	H ₁	H ₂	Actuator				Ref. Weight (kg/unit)	Actuator
A	B				A	A ₁	B	B ₁		
40	1 1/2	33	226	105	175	105	160	92.5	7.8	AD-300
50	2	43	226	112	175	105	160	92.5	8.0	AD-300
65	2 1/2	46	226	120	175	105	160	92.5	8.5	AD-300
80	3	46	226	130	175	105	160	92.5	9.0	AD-700
100	4	52	226	152	175	105	160	92.5	10.5	AD-700
125	5	56	256	169	175	105	160	92.5	14.0	HD-02K
150	6	60	256	178	175	105	160	92.5	15.0	HD-02K
200	8	71	256	230	175	105	160	92.5	18.0	HD-02K
250	10	78	315	250	217.5	158	175	87.5	27.0	HD-06K
300	12	114	315	280	217.5	158	175	87.5	34.0	HD-06K