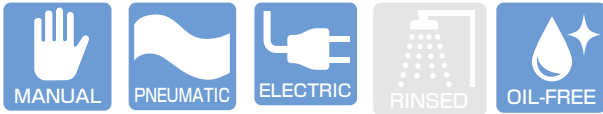


JIS ANSI/ASME/ASTM DIN/ISO



Operating Temperature(°C)

	Flange Type	Union Type
PVC	0 ~ 60	0 ~ 50
HT-CPVC	0 ~ 90	0 ~ 90
PP	0 ~ 90	
PVDF	0 ~ 120	0 ~ 100

ESLON ELECTRIC DIAPHRAGM VALVE TYPE KS

Feature

- Excellent chemical and corrosion resistance with resin coated aluminum actuator.
- Compact and high durability motor onboard.
- Easy flow control and water hammer prevention by slow action.
- Visual position indicator on actuator.
- Manual open-close operation is available by attached box wrench.

⚠ Important Notes

- Fluid containing slurry, solid, sediment, or crystallized fluid might disable sealing.

Time For Open-Close (50/60Hz)

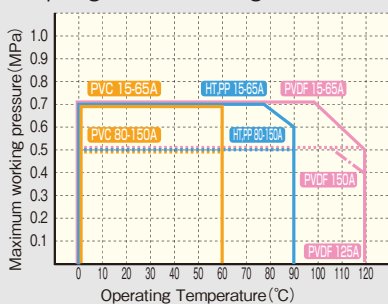
Size (A)	Time(Sec.)	Size (A)	Time(Sec.)
15	12/10	65	36/30
20	14/12	80	38/32
25,32	15/13	100	50/45
40	11/9	125	72/61
50	20/17	150	90/72

Specification of Actuator

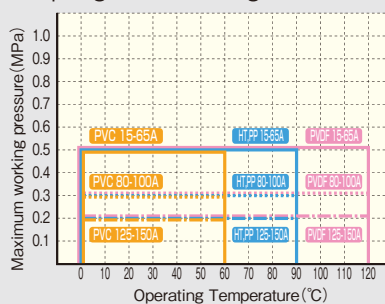
Nominal diameter(A)	15~32A	40~65A	80A	100A	125-150A
Input system	Power switching system				
Contact output	Power supply voltage				
Operating voltage	Single-phase AC100,200V(50/60Hz)				
Motor	Type	Reversible motor			
	Time rating	30 minutes rating			
Protect	15~32A	impedance protect inside			
	40~150A	Thermal protect inside			
Rated current	100V	0.3A	0.8A	1.0A	1.4A 2.0A
	200V	0.15A	0.4A	0.5A	0.7A 1.0A
Manual operation	Drive shaft direct operation				
Connector type	G1/2Conduit connector (max.φ10.5 Cabtire cable)				
Material	AC-4 Resin Coating				
Protection	IP63				

Maximum Working Pressure - Temperature Rating

■ Diaphragm:EPDM/Flange



■ Diaphragm:PTFE/Flange



■ Diaphragm:EPDM-PTFE/TS-Thread-Butt Spigot

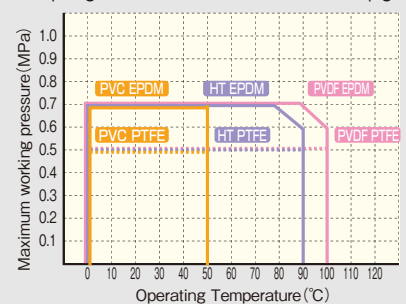
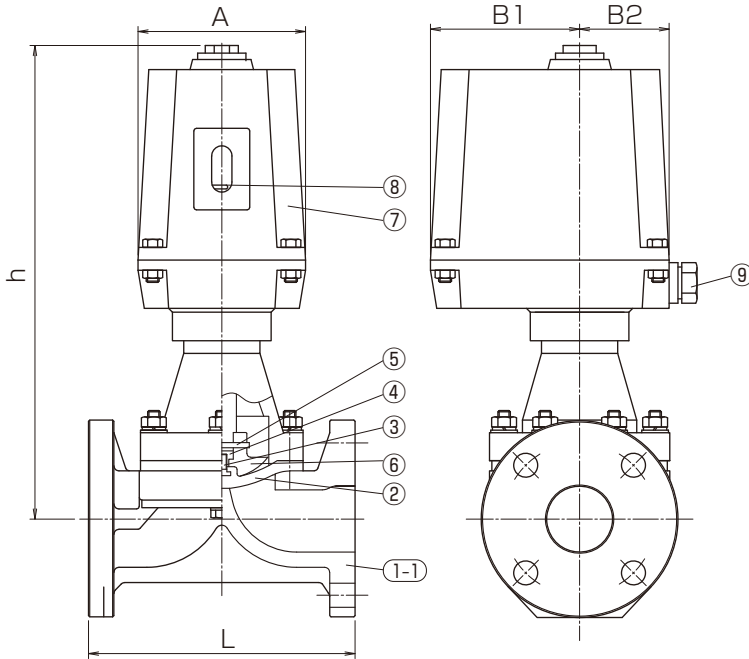
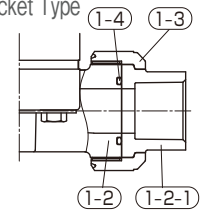


Figure (Flange Type · TS Socket Type · Thread Type · Butt Type)

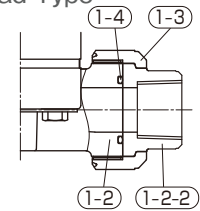
● Flange Type



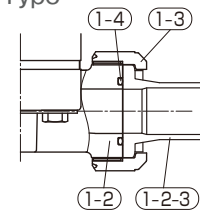
● TS Socket Type



● Thread Type



● Butt Type



Parts List

No.	Part Name	QTY	Material / Type
1-1	Flange Body	1	●PVC ●HT(JIS:Brown)●CPVC(ANSI·DIN:Gray)●PP ●PVDF
1-2	Union Body	1	●PVC ●HT(JIS:Brown)●CPVC(ANSI·DIN:Gray)●PVDF
1-2-1	TS Socket	2	●PVC ●HT(JIS:Brown)●CPVC(ANSI·DIN:Gray)
1-2-2	Thread Socket	2	●PVC ●PVDF
1-2-3	Butt Spigot	2	●PVDF
1-3	Union Nut	2	●PVC ●HT(JIS:Brown)●CPVC(ANSI·DIN:Gray)●PVDF
1-4	O-Ring	2	●EPDM ●FKM
2	Diaphragm	1	●EPDM ●PTFE+EPDM ●PTFE+PVDF+EPDM
3	Diaphragm Screw	1	SUS304※
4	Compressor Nut	1	C3604※
5	Pin	1	SUS304※
6	Compressor	1	GF-PP
7	Actuator	1	AC-4+Resin Coating
8	Indicator	1	C3604
9	Electric Conduit Gland	1	PP

※ Titanium Palladium is available on request.

Option

- No-voltage limit switch
- Space heater
- Sodium resistance coating, Acid resistance coating

Size

Size		L												Actuator				Ref. Weight (kg/unit)	Actuator	
A	B	Flange		TS Socket			Thread				Butt Spigot		Socket welding	h	A	B ₁	B ₂			
		JIS10K	ANSI	DIN	JIS10K	ANSI	DIN	JIS(Rc)	ANSI(NPT)	DIN(Rp)	DIN	DIN	JIS							DIN
		PVC,HT,CPVC,PP,PVDF	PVC,HT,CPVC	PVC	PVDF	PVC,PVDF	PVC,PVDF	PP,PVDF	PE	PE	PP									
15	1/2	110	144	137	126	133	134	133	133	176	246	—	137	266	112	93	57	5.0	ED-6	
20	3/4	120	172	158	146	157	157	157	157	189	259	—	153	277	112	93	57	5.5	ED-6	
25	1	130	187	177	165	173	180	173	173	203	283	293	171	285	112	93	57	6.0	ED-6	
32	1 1/4	142	210	190	179	188	191	188	188	210	301	—	183	285	112	93	57	6.3	ED-6	
40	1 1/2	180	262	258	247	248	254	248	248	272	376	376	245	349	132	118	70	9.5	ED-25	
50	2	210	298	283	284	280	290	269	269	306	419	409	278	387	132	118	70	10.5	ED-25	
65	2 1/2	250	—	—	—	—	—	—	—	—	—	—	—	435	132	118	70	12.5	ED-25	
80	3	280	—	—	—	—	—	—	—	—	—	—	—	511	200	154	83	22.0	ED-40	
100	4	340	—	—	—	—	—	—	—	—	—	—	—	562	200	154	83	27.5	ED-60	
125	5	410	—	—	—	—	—	—	—	—	—	—	—	595	200	154	84	35.0	ED-90	
150	6	480	—	—	—	—	—	—	—	—	—	—	—	601	200	154	84	43.0	ED-90	

Unit : mm