

No.	Part Name	Q'TY	Material/Type
1	Body	1	PVC
2	Ball Seat	2	□EPDM
3	O-ring	1	□FKM
4	Socket	1	PVC
5	Ball	1	PVC
6	Handle	1	ABS
7	Stem Stopper	1	PVC

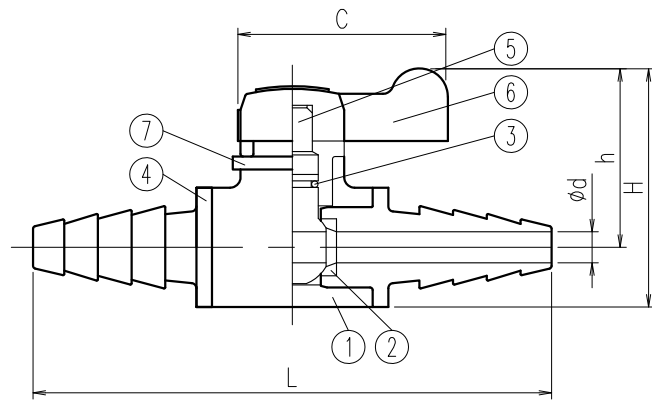
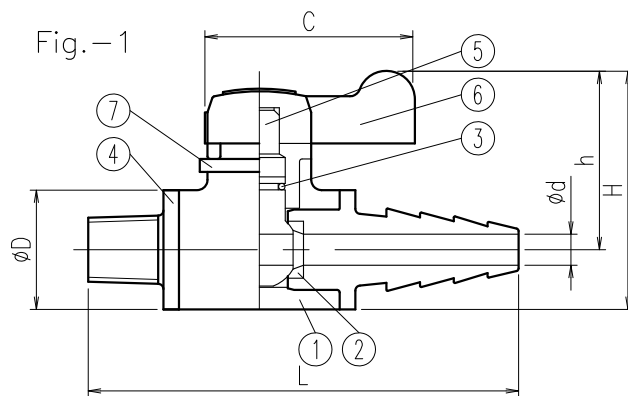
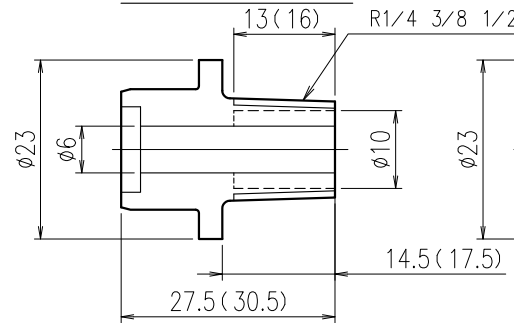


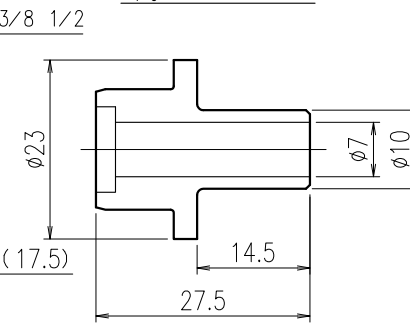
Fig. -1



Male Screw End Dimensions

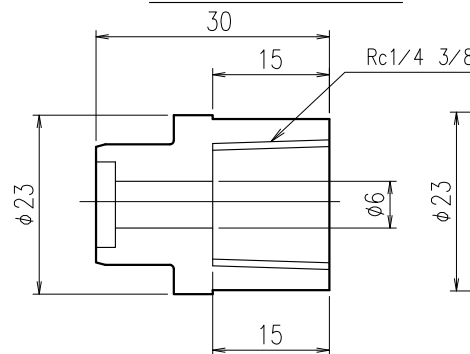


Spigot End Dimensions



Notes) Dashed line, () Dimension ... R1/2

Female Screw End Dimensions



Hose End Dimensions

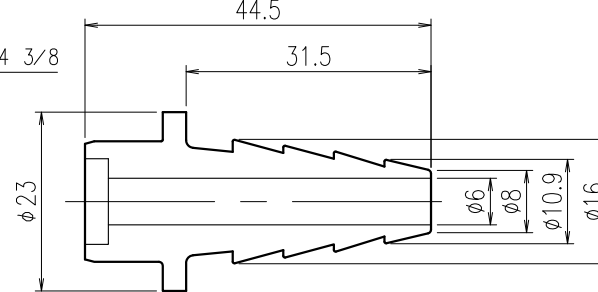


Table-1 Combination of Connection Ends

Combination of Connection Ends	Distance L±1
●HoseX Hose	100
●Male ScrewX Hose Notes) The attachment direction of a faucet becomes as it is shown in Fig. -1.	83 (86)
Male ScrewX Male Screw	66 (72)
Female ScrewX Female Screw	71
SpigotX Spigot	66
Male ScrewX Female Screw	69 (72)
Male ScrewX Spigot	66 (69)
Female ScrewX Hose	86
Female ScrewX Spigot	69
HoseX Spigot	83

- 1) ● :Standard combination
 2) () :Male Screw 1/2
 3) Please specify the attachment direction of a faucet products other than a standard combination.

Dimension Table

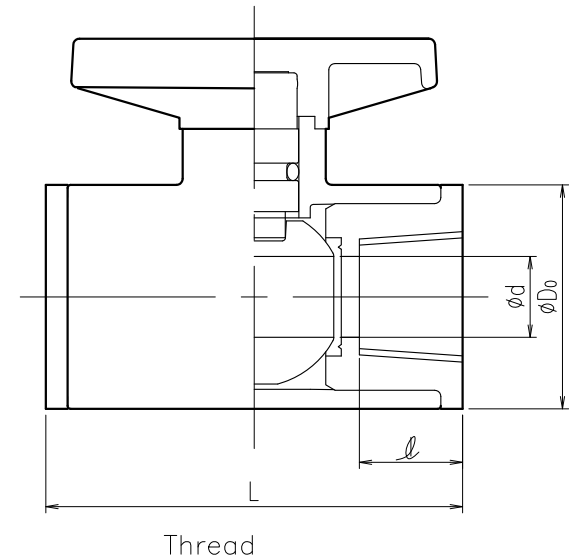
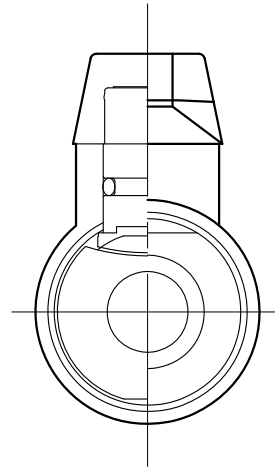
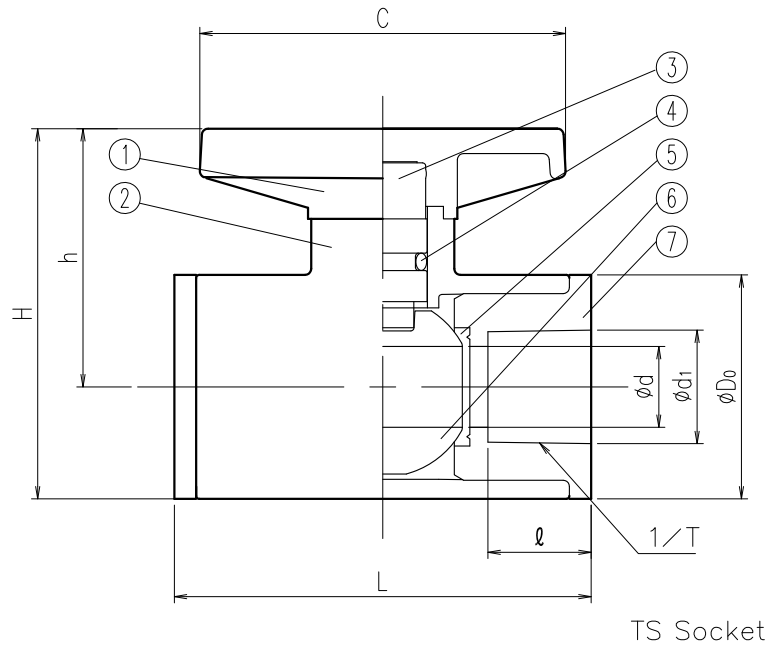
Unit:mm

A (B)	ϕd	L	ϕD	H (Ref.)	h (Ref.)	C
6 (1/8)	Refer to Drawing	Refer to Table-1	23	47	35	40

Client name		Date
Rinsed	<input type="checkbox"/> YES	Approved by:

ESLON
 MINI BALL VALVE 6A
 Drawing No. MBV06JE
SEKISUI SEKISUI CHEMICAL CO.,LTD.

No.	Part Name	Q'TY	Material/Type
1	Handle	1	ABS
2	Body	1	PVC
3	Stem	1	PVC
4	O-Ring	1	□EPDM □FKM
5	Ball Seat	2	PTFE
6	Ball	1	PVC
7	Socket □Rc1/2 □TS 13A □TS 15A	2	PVC



Dimension Table

size	A(B)	φd	L	H	h	φDo	C	Thread		TS Socket		
								Rc	ℓ	φd1	1/T	ℓ
□ 13(3/8)	13	13	67	60	42	35	60	-	-	18.25	1/33	16.5
□ 15(1/2)	13	13	67	60	42	35	60	Rc1/2	16	22.25	1/33	16.5

Unit:mm

Client name		Date
Rinsed	<input type="checkbox"/> YES	Approved by:
ESLON MINI BALL VALVE TS Socket / Female Thread Drawing No. MBV1315E		
SEKISUI SEKISUI CHEMICAL CO.,LTD.		