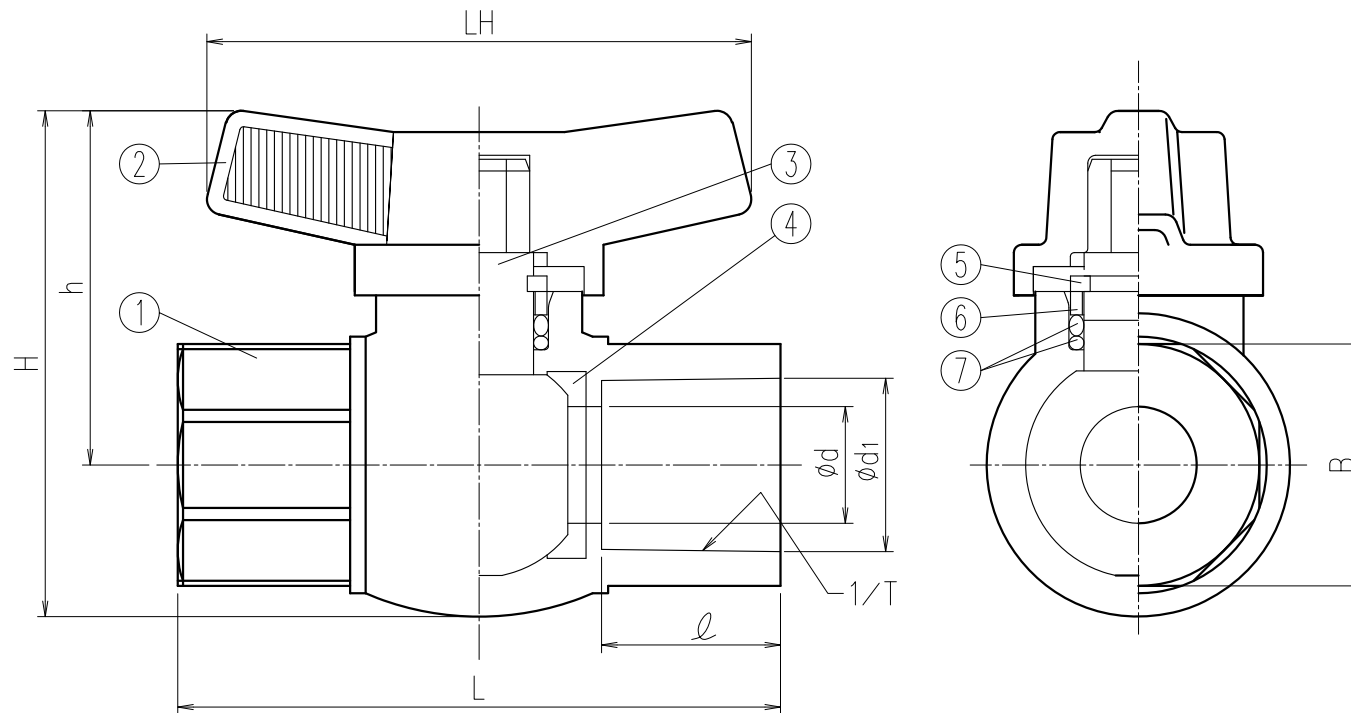


No.	Part Name	Q'TY	Material/Type
1	Body	1	PVC
2	Handle	1	ABS
3	Stem	1	CPVC
4	Ball Seat	2	PTFE
5	Ring	1	PVDF
6	Collar	1	PVDF
7	O-Ring	2	<input type="checkbox"/> EPDM <input type="checkbox"/> FKM



Dimension Table

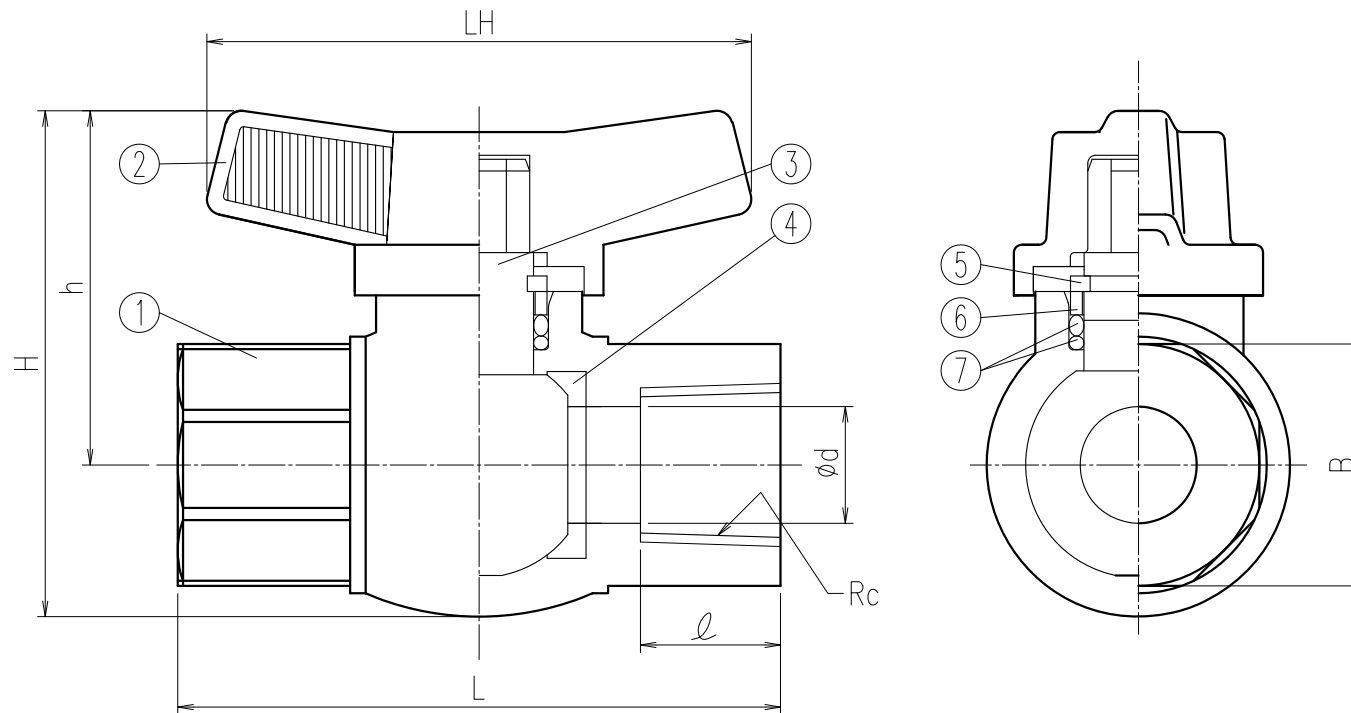
Unit:mm

Size	A(B)	$\phi d$	L	TS Socket				H	h	LH
				$\phi d1$	1/T	l	B			
<input type="checkbox"/>	13 (1/8)	13	72.5±3.0	18.3	1/30	18.0	25.4	65	45.5	70
<input type="checkbox"/>	15 (1/2)	15	77.5±3.0	22.3	1/37	22.4	32.0	65	45.5	70
<input type="checkbox"/>	20 (3/4)	20	90.0±3.0	26.3	1/42	25.6	36.0	75	52.0	76

1. Socket dimension is in accordance with the following standard;JIS K6743
2. Handle standard color is orange.

Client name		Date
Handle Color	<input type="checkbox"/> Orange (Standard)	Approved by:
	<input type="checkbox"/> Blue <input type="checkbox"/> Ivory <input type="checkbox"/> Green <input type="checkbox"/> Yellow <input type="checkbox"/> White	
Rinsed	<input type="checkbox"/> YES	
ESLON COMPACT BALL VALVE		
TS SOCKET TYPE SIZE 13 (3/8") -20 (3/4")		
Drawing No.   CB1320SE		
<b>SEKISUI SEKISUI CHEMICAL CO.,LTD.</b>		

No.	Part Name	Q'TY	Material/Type
1	Body	1	PVC
2	Handle	1	ABS
3	Stem	1	CPVC
4	Ball Seat	2	PTFE
5	Ring	1	PVDF
6	Collar	1	PVDF
7	O-Ring	2	<input type="checkbox"/> EPDM <input type="checkbox"/> FKM



Dimension Table

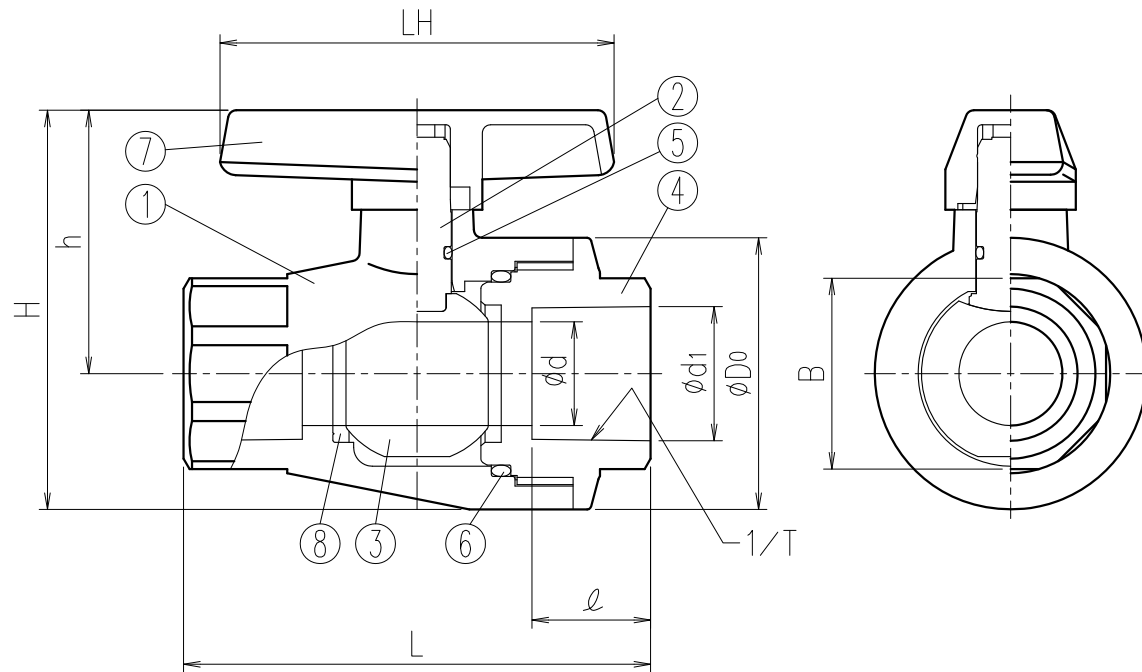
Unit:mm

Size	A(B)	ød	L	Thread			H	h	LH
				Rc	l	B			
<input type="checkbox"/>	13(3/8)	13	72.5±3.0	Rc3/8	15	25.4	65	45.5	70
<input type="checkbox"/>	15(1/2)	15	77.5±3.0	Rc1/2	18	32.0	65	45.5	70
<input type="checkbox"/>	20(3/4)	20	90.0±3.0	Rc3/4	18	36.0	75	52.0	76

1. Thread dimension is in accordance with the following standard;JIS B 0203
2. Handle standard color is orange.

Client name		Date
Handle Color	<input type="checkbox"/> Orange (Standard)	Approved by:
	<input type="checkbox"/> Blue <input type="checkbox"/> Ivory <input type="checkbox"/> Green <input type="checkbox"/> Yellow <input type="checkbox"/> White	
Rinsed	<input type="checkbox"/> YES	
ESLON COMPACT BALL VALVE		
THREAD TYPE SIZE 13(3/8") -20(3/4")		
Drawing No.  CB1320NE		
<b>SEKISUI SEKISUI CHEMICAL CO.,LTD.</b>		

No.	Part Name	Q'TY	Material/Type
1	Body	1	PVC
2	Stem	1	
3	Ball	1	
4	Body Cap	1	
5	Stem O-Ring	1	□EPDM
6	Body O-Ring	1	□FKM
7	Handle	1	ABS
8	Ball Seat	2	PTFE



Dimension Table

Unit:mm

Size	A(B)	$\phi d$	L	TS SOCKET				H	h	$\phi D_0$	LH
				$\phi d_1$	1/T	$\phi$	B				
□ 25(1)		25	113±3.0	32.3	1/43	29	46	96	64	66	95
□ 32(1•1/4)		29	114±3.0	38.4	1/37	32	60(54)	119	82	74	110
□ 40(1•1/2)		35	130±3.0	48.5	1/38	35	65	133	91	85	110
□ 50(2)		45	155±3.0	60.6	1/35	39	77	154	103	103	140

Remarks) 1.Socket dimension is in accordance with the following standard;JIS K6743  
2.The octagonal part of 32A differs by the Body and Bodycap side.  
The value by the side of a Body is indicated by ( ).

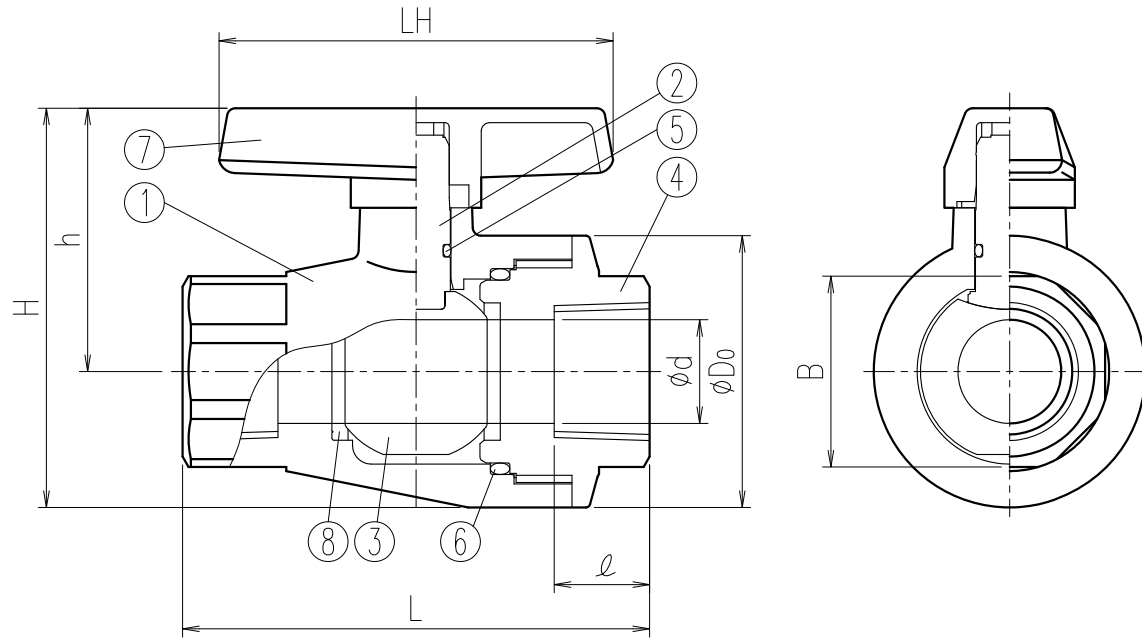
Client name		Date
Handle Color	<input type="checkbox"/> Orange ( Standard) <input type="checkbox"/> Blue <input type="checkbox"/> Ivory <input type="checkbox"/> Green <input type="checkbox"/> Yellow <input type="checkbox"/> White	Approved by:

ESLON LOCK BALL VALVE  
TS SOCKET TYPE SIZE 25 ( 1" ) -50 ( 2" )

Drawing No. | LV2550SE

**SEKISUI SEKISUI CHEMICAL CO.,LTD.**

No.	Part Name	Q'TY	Material/Type
1	Body	1	PVC
2	Stem	1	
3	Ball	1	
4	Body Cap	1	
5	Stem O-Ring	1	□EPDM
6	Body O-Ring	1	□FKM
7	Handle	1	ABS
8	Ball Seat	2	PTFE



Dimension Table

Unit:mm

Size	A(B)	ød	L	Thread			H	h	øDO	LH
				Rc	ℓ	B				
□ 25(1)	25	25	113±3.0	Rc1	23	46	96	64	66	95
□ 32(1·1/4)	29	29	114±3.0	Rc1 1/4	28	60(54)	119	82	74	110
□ 40(1·1/2)	35	35	130±3.0	Rc1 1/2	30	65	133	91	85	110
□ 50(2)	45	45	155±3.0	Rc2	35	77	154	103	103	140

Remarks) 1. Thread dimension is in accordance with the following standard;JIS B 0203

2.The octagonal part of 32A differs by the Body and Bodycap side.

The value by the side of a Body is indicated by ( ).

Client name		Date
Handle Color	<input type="checkbox"/> Orange (Standard) <input type="checkbox"/> Blue <input type="checkbox"/> Ivory <input type="checkbox"/> Green <input type="checkbox"/> Yellow <input type="checkbox"/> White	Approved by:

ESILON LOCK BALL VALVE  
 THREAD TYPE SIZE 25(1") -50(2")

Drawing No. | LV2550NE

**SEKISUI SEKISUI CHEMICAL CO.,LTD.**

1-2013.12.03