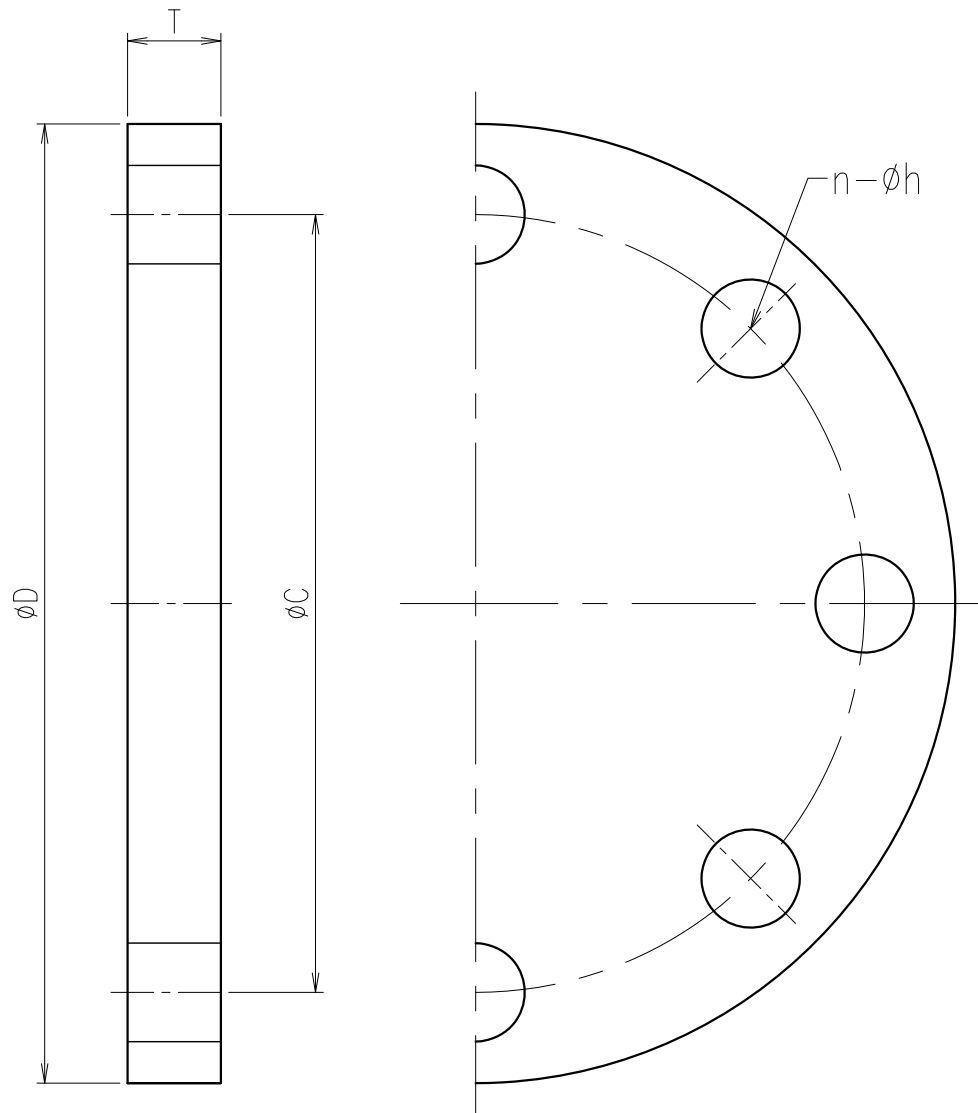


Dimension Table Unit:mm

Designated Size	A (B)	øD	T
□ 13 (3/8)		90	12
□ 15 (1/2)		95	12
□ 20 (3/4)		100	14
□ 25 (1)		125	14
□ 32 (1·1/4)		135	16
□ 40 (1·1/2)		140	16
□ 50 (2)		155	16
□ 65 (2·1/2)		175	18
□ 80 (3)		185	18
□ 100 (4)		210	18
□ 125 (5)		250	20
□ 150 (6)		280	22
□ 200 (8)		330	22
□ 250 (10)		400	24
□ 300 (12)		445	24

Note) Flange dimension is in accordance with the following standard; JIS B 2220

Client name		Date
Material	■ PVC	Approved by:
ESLON SP FLANGE JIS10K 13 (3/8") - 300 (12")		
Drawing No.   IP133HFE		
<b>SEKISUI SEKISUI CHEMICAL CO.,LTD.</b>		



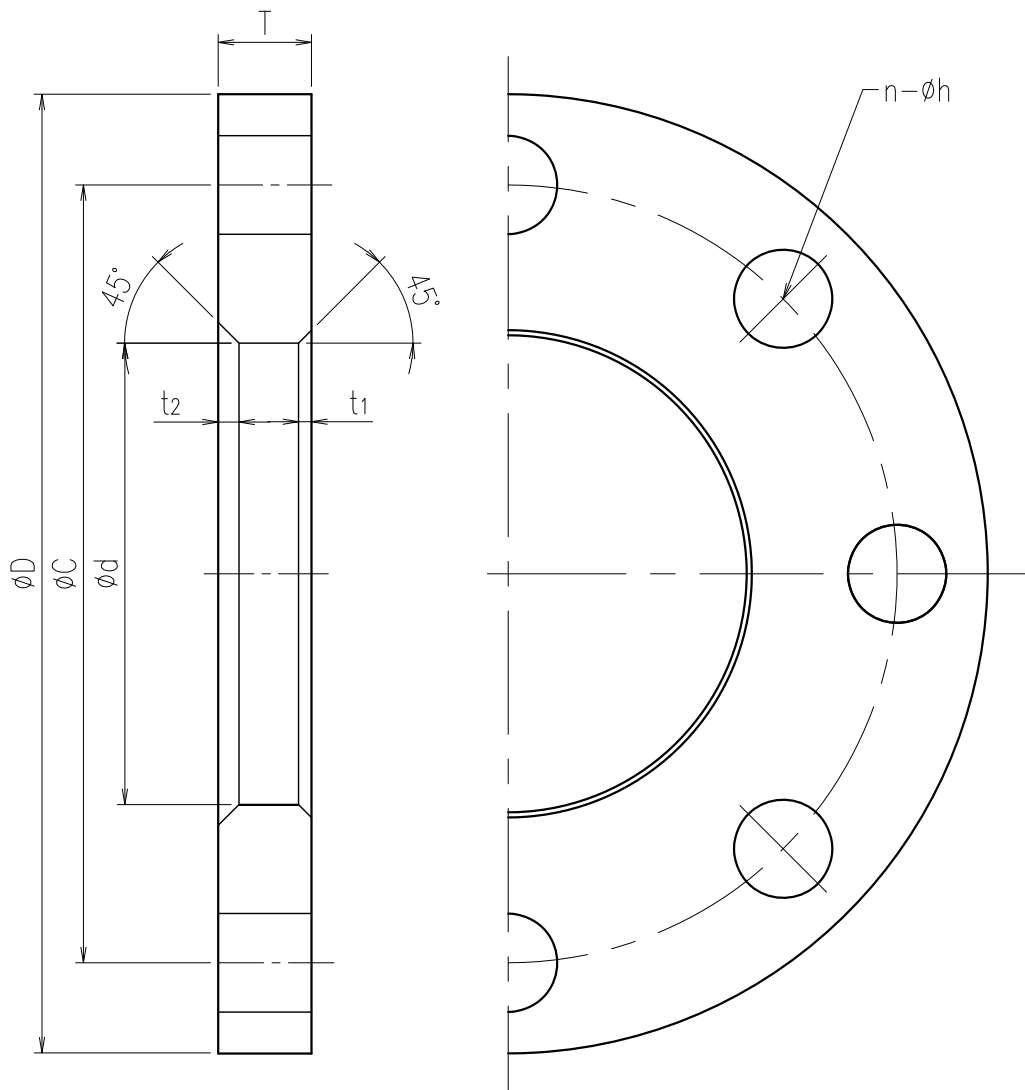
Dimension Table

Unit:mm

Designated Size	A (B)	$\phi D$	T	$\phi C$	n- $\phi h$	Bolt	
<input type="checkbox"/>	13 (3/8)	90	12	65	4-15	M12	50
<input type="checkbox"/>	15 (1/2)	95	12	70	4-15	M12	50
<input type="checkbox"/>	20 (3/4)	100	14	75	4-15	M12	50
<input type="checkbox"/>	25 (1)	125	14	90	4-19	M16	55
<input type="checkbox"/>	32 (1 1/4)	135	16	100	4-19	M16	60
<input type="checkbox"/>	40 (1 1/2)	140	16	105	4-19	M16	60
<input type="checkbox"/>	50 (2)	155	16	120	4-19	M16	70
<input type="checkbox"/>	65 (2 1/2)	175	18	140	4-19	M16	75
<input type="checkbox"/>	80 (3)	185	18	150	8-19	M16	75
<input type="checkbox"/>	100 (4)	210	18	175	8-19	M16	80
<input type="checkbox"/>	125 (5)	250	20	210	8-23	M20	80
<input type="checkbox"/>	150 (6)	280	22	240	8-23	M20	85
<input type="checkbox"/>	200 (8)	330	22	290	12-23	M20	90
<input type="checkbox"/>	250 (10)	400	24	355	12-25	M22	95
<input type="checkbox"/>	300 (12)	445	24	400	16-25	M22	95

Note) Flange dimension is in accordance with the following standard; JIS B 2220

Client name		Date
Material	<input type="checkbox"/> PVC <input type="checkbox"/> HI-PVC ( 15-300A) <input type="checkbox"/> HT ( 15-300A)	Approved by:
ESLON		
SB FLANGE JIS10K 13 ( 3/8" ) -300 ( 12" )		
Drawing No.   B133HFE		
<b>SEKISUI SEKISUI CHEMICAL CO.,LTD.</b>		



Dimension Table

Unit:mm

Designated Size	A (B)	$\phi d$	$\phi D$	T	t1	t2	$\phi C$	n- $\phi h$	Bolt
□ 13 (3/8)		18	90	12	1.5	3.0	65	4-15	M12 50
□ 15 (1/2)		22	95	12	1.5	3.0	70	4-15	M12 50
□ 20 (3/4)		26	100	14	1.5	3.0	75	4-15	M12 50
□ 25 (1)		32	125	14	1.5	3.0	90	4-19	M16 55
□ 32 (1. 1/4)		38	135	16	2.5	3.0	100	4-19	M16 60
□ 40 (1. 1/2)		48	140	16	2.5	3.0	105	4-19	M16 60
□ 50 (2)		60	155	16	2.5	4.0	120	4-19	M16 70
□ 65 (2.1/2)		76	175	18	2.5	4.0	140	4-19	M16 75
□ 80 (3)		89	185	18	2.5	4.0	150	8-19	M16 75
□ 100 (4)		114	210	18	3.0	4.0	175	8-19	M16 80
□ 125 (5)		140	250	20	4.0	4.0	210	8-23	M20 80
□ 150 (6)		165	280	22	4.0	4.0	240	8-23	M20 85
□ 200 (8)		216	330	22	4.0	4.0	290	12-23	M20 90
□ 250 (10)		267	400	24	4.0	4.0	355	12-25	M22 95
□ 300 (12)		321	445	24	4.0	4.0	400	16-25	M22 95

Note) Flange dimension is in accordance with the following standard; JIS B 2220

Client name		Date
Material	■ PVC	Approved by:
ESLON		
SJ FLANGE JIS10K 13 (3/8") -300 (12")		
Drawing No.   J1 33HFE		
<b>SEKISUI SEKISUI CHEMICAL CO.,LTD.</b>		