

Dimension Table

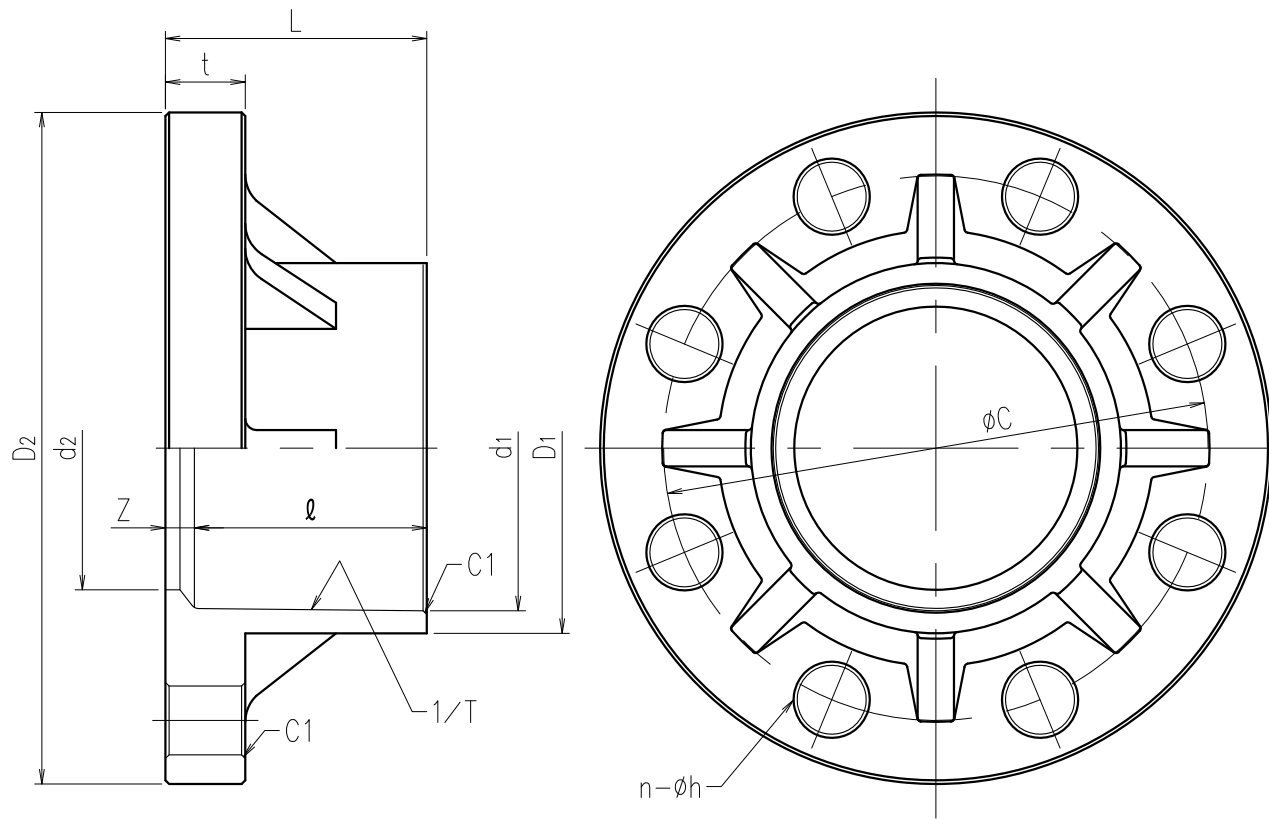
Unit:mm

SIZE	A(B)	TS SOCKET				L	Z	FLANGE					Bolt	
		d1	l	1/T	D1			C	D2	d2	t	n-φh	M	Length
□ 13(3/8)	18.4	26	1/30	26	31	5	65	90	14	14	4-15	M12	50	
□ 15(1/2)	22.4	30	1/34	31	35	5	70	95	17	14	4-15	M12	50	
□ 20(3/4)	26.5	35	1/34	35	40	5	75	100	21	14	4-15	M12	50	
□ 25(1)	32.6	40	1/34	42	45	5	90	125	25	14	4-19	M16	55	
□ 32(1 1/4)	38.6	44	1/34	48	50	6	100	135	31	16	4-19	M16	60	
□ 40(1 1/2)	48.7	55	1/37	61	61	6	105	140	41	16	4-19	M16	60	
□ 50(2)	60.8	63	1/37	73	70	7	120	155	52	20	4-19	M16	70	
□ 65(2 1/2)	76.6	61	1/48	88	70	9	140	175	67	22	4-19	M16	75	
□ 80(3)	89.6	64	1/49	102	72	8	150	185	78	22	8-19	M16	75	
□ 100(4)	114.7	84	1/56	132	90	6	175	210	100	22	8-19	M16	75	
□ 125(5)	140.9	104	1/58	158	114	10	210	250	125	24	8-23	M20	80	
□ 150(6)	166.0	132	1/63	186	142	10	240	280	146	26	8-23	M20	85	
□ 200(8)	217.5	155	1/50	238	166	11	290	330	196	28	12-23	M20	90	
□ 250(10)	268.8	185	1/50	289	198	13	355	400	247	30	12-25	M22	95	
□ 300(12)	319.0	185	1/57	344	203	18	400	445	298	32	16-25	M22	100	

Remarks) 1. The dimensions of TS Ends are in conformity with JIS K6743
 2. Flange dimensions are according to JIS B 2220:2004.

SIZE	Form		
	PVC	HI	HT
13~20A			
25~30A			
40A			
50~65A			
80A			
100A			
125~150A			
200~250A			
300A			

Client name		Date
Body Material	<input type="checkbox"/> PVC <input type="checkbox"/> HI-PVC <input type="checkbox"/> C-PVC (HT)	Approved by:
Eslon		
TS Flange JIS10K 13~300A		
Drawing No. TF133HFE		
SEKISUI SEKISUI CHEMICAL CO.,LTD.		



Dimension Table

Unit: mm

SIZE	A(B)	TS SOCKET				L	Z	FLANGE					Weight (Ref.) kg/unit
		d1	l	1/T	D1			C	D2	d2	t	n-oh	
□ 15(1/2)	22.4	30	1/34	31	35	5	60.5	89.0	17	14	4-16	0.13	
□ 20(3/4)	26.5	35	1/34	35	40	5	70.0	98.6	21	14	4-16	0.15	
□ 25(1)	32.6	40	1/34	42	45	5	79.5	108.0	25	14	4-16	0.24	
□ 32(1 1/4)	38.6	44	1/34	48	50	6	89.0	117.5	31	16	4-16	0.31	
□ 40(1 1/2)	48.7	55	1/37	61	61	6	98.5	127.0	41	16	4-16	0.36	
□ 50(2)	60.8	63	1/37	73	70	7	120.5	155.0	52	20	4-20	0.52	
□ 65(2 1/2)	76.6	61	1/48	88	70	9	139.5	175.0	67	22	4-20	0.71	
□ 80(3)	89.6	64	1/49	102	72	8	152.5	190.5	78	22	4-20	0.89	
□ 100(4)	114.7	84	1/56	132	90	6	190.5	229.0	100	22	8-20	1.65	
□ 125(5)	140.9	104	1/58	158	114	10	216.0	250.0	125	24	8-22	1.67	
□ 150(6)	166.0	132	1/63	186	142	10	241.5	280.0	146	26	8-22	2.53	
□ 200(8)	217.5	155	1/50	238	166	11	298.5	343.0	196	28	8-22	4.39	
□ 250(10)	268.8	185	1/50	289	198	13	362.0	406.0	247	30	12-26	5.48	
□ 300(12)	319.0	185	1/57	344	203	18	432.0	483.0	298	32	12-26	7.80	

Remarks) 1. The dimensions of TS Ends are in conformity with JIS K6743
2. Flange dimensions are according to ANSI B 16.5-1981 class 150.

SIZE	Form	
15~20A		
25~80A		
100A		
125~200A		
250~300A		

Client name		Date
Body Material	<input type="checkbox"/> PVC <input type="checkbox"/> HI-PVC <input type="checkbox"/> C-PVC (HT)	Approved by:
Eslon TS Flange ANSI 15~300A		
Drawing No. TF133HAE		
SEKISUI SEKISUI CHEMICAL CO.,LTD.		