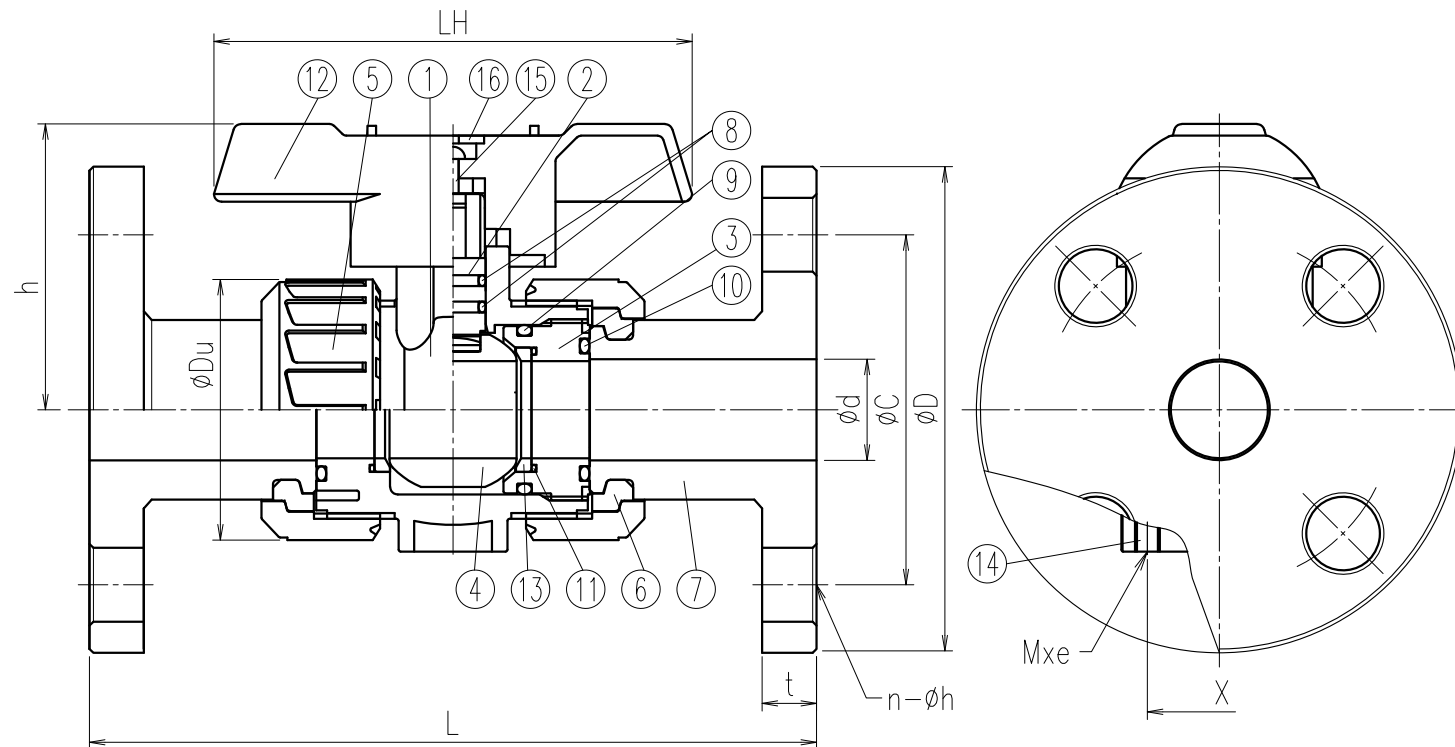


No.	Part Name	Q'TY	Material/Type
1	Body	1	
2	Stem	1	□PVC
3	Ball holder	1	□HT
4	Ball	1	□C-PVC
5	Union nut	2	□PP
6	Set ring	2	□PVDF
7	Flange	2	
8	Stem O-ring	2	
9	Ball holder O-ring	1	□EPDM
10	Union O-ring	2	□FKM
11	Ball seat O-ring	2	
12	Handle	1	ABS
13	Ball Seat	2	PTFE
14	Insert Nut	2	C3604
15	Screw	1	SUS304
16	Handle Cap	1	ABS



Dimension Table

Unit: mm

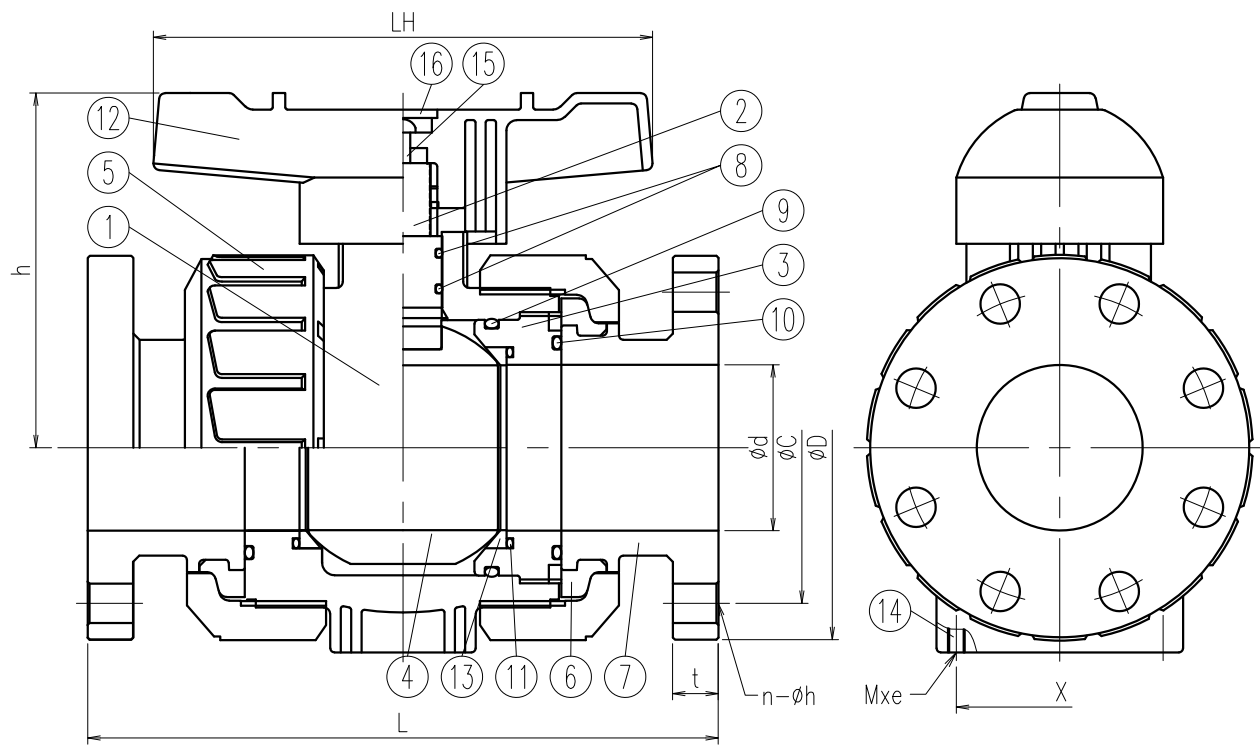
Size	A(B)	ϕd	L	Flange												h	ϕDu	LH	Fixing Insert Nut	
				JIS10K				ANSI				DIN							X	Mxe
				ϕD	ϕC	n- ϕh	t	ϕD	ϕC	n- ϕh	t	ϕD	ϕC	n- ϕh	t					
<input type="checkbox"/> 15 (1/2)	15	143±1.5	95	70	4-15	14	89.0	60.5	4-16	11.5	95	65	4-14	11	53	49	95	27	M5x8	
<input type="checkbox"/> 20 (3/4)	20	172±1.5	100	75	4-15	14	98.0	70.0	4-16	13.0	105	75	4-14	12	62	59	95	32	M5x8	
<input type="checkbox"/> 25 (1)	25	187±1.5	125	90	4-19	14	108.0	79.5	4-16	14.5	115	85	4-14	14	76	67	123	37	M5x8	
<input type="checkbox"/> 32 (1·1/4)	32	190±1.5	135	100	4-19	16	117.5	89.0	4-16	16.0	140	100	4-18	15	84	81	123	42	M5x8	
<input type="checkbox"/> 40 (1·1/2)	40	212±1.5	140	105	4-19	16	127.0	98.5	4-16	17.5	150	110	4-18	16	114	98	158	57	M6x10	
<input type="checkbox"/> 50 (2)	50	234±1.5	155	120	4-19	20	152.0	120.5	4-19	19.5	165	125	4-18	18	120	120	158	67	M6x10	

Note) Flange dimension is in accordance with the following standard;
 JIS B 2220 for JIS10K, ANSI B16.5 for ANSI and DIN2501 PN10/PN16 (ISO7005 PN10) for DIN

Client name		Date
Flange Standard	<input type="checkbox"/> JIS10K <input type="checkbox"/> ANSI <input type="checkbox"/> DIN	Approved by:
Oil Free	<input type="checkbox"/> YES	

ESLON Ball Valve
 Flange Type 15 (1/2") -50 (2")
 Drawing No. | BVM1550FXE

SEKISUI SEKISUI CHEMICAL CO.,LTD.



No.	Part Name	Q'TY	Material/Type
1	Body	1	
2	Stem	1	□PVC
3	Ball holder	1	□HT
4	Ball	1	□C-PVC
5	Union nut	2	□PP
6	Set ring	2	□PVDF
7	Flange	2	
8	Stem O-ring	2	
9	Ball holder O-ring	1	□EPDM
10	Union O-ring	2	□FKM
11	Ball seat O-ring	2	
12	Handle	1	ABS
13	Ball Seat	2	PTFE
14	Insert Nut	2	C3604
15	Screw	1	SUS304
16	Handle Cap	1	ABS

Dimension Table

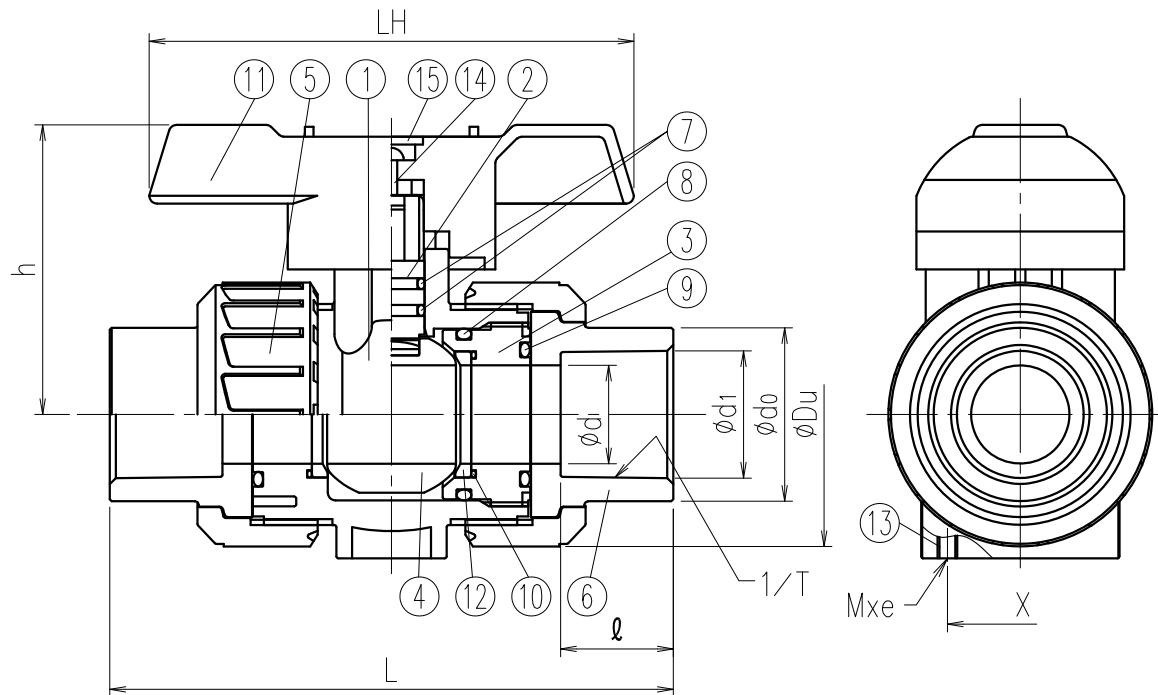
Unit: mm

Size	A(B)	φd	L		Flange												h	φDu	LH	Fixing Insert Nut	
					JIS10K				ANSI				DIN							X	Mxe
					PVC,HT	PP,PVDF	φD	φC	n-φh	t	φD	φC	n-φh	t	φD	φC					
□ 65 (2 1/2)	65	259±1.5	257±1.5	175	140	4-19	22	178	139.5	4-20	22.5	185	145	4-18	22	153	150	211	81	M6x10	
□ 80 (3)	80	304±1.5	304±1.5	185	150	8-19	22	191	152.5	4-20	24.0	200	160	8-18	23	171	186	240	99.7	M8x10	
□ 100 (4)	100	372±1.5	367±1.5	210	175	8-19	24	229	190.5	8-20	24.0	220	180	8-18	23	202	228	290	119.7	M8x10	

Note) Flange dimension is in accordance with the following standard;
 JIS B 2220 for JIS10K, ANSI B16.5 for ANSI and DIN2501 PN10/PN16 (ISO7005 PN10) for DIN

Client name		Date
Flange Standard	<input type="checkbox"/> JIS10K <input type="checkbox"/> ANSI <input type="checkbox"/> DIN	Approved by:
Oil Free	<input type="checkbox"/> YES	
ESLON Ball Valve Flange Type 65 (2-1/2") - 100 (4") Drawing No. BVM651HFXE		
SEKISUI SEKISUI CHEMICAL CO.,LTD.		

No.	Part Name	Q'TY	Material/Type
1	Body	1	
2	Stem	1	
3	Ball holder	1	□PVC
4	Ball	1	□HT
5	Union nut	2	□C-PVC
6	Socket	2	
7	Stem O-ring	2	
8	Ball holder O-ring	1	□EPDM
9	Union O-ring	2	□FKM
10	Ball seat O-ring	2	
11	Handle	1	ABS
12	Ball Seat	2	PTFE
13	Insert Nut	2	C3604
14	Screw	1	SUS304
15	Handle Cap	1	ABS



Dimension Table

Unit: mm

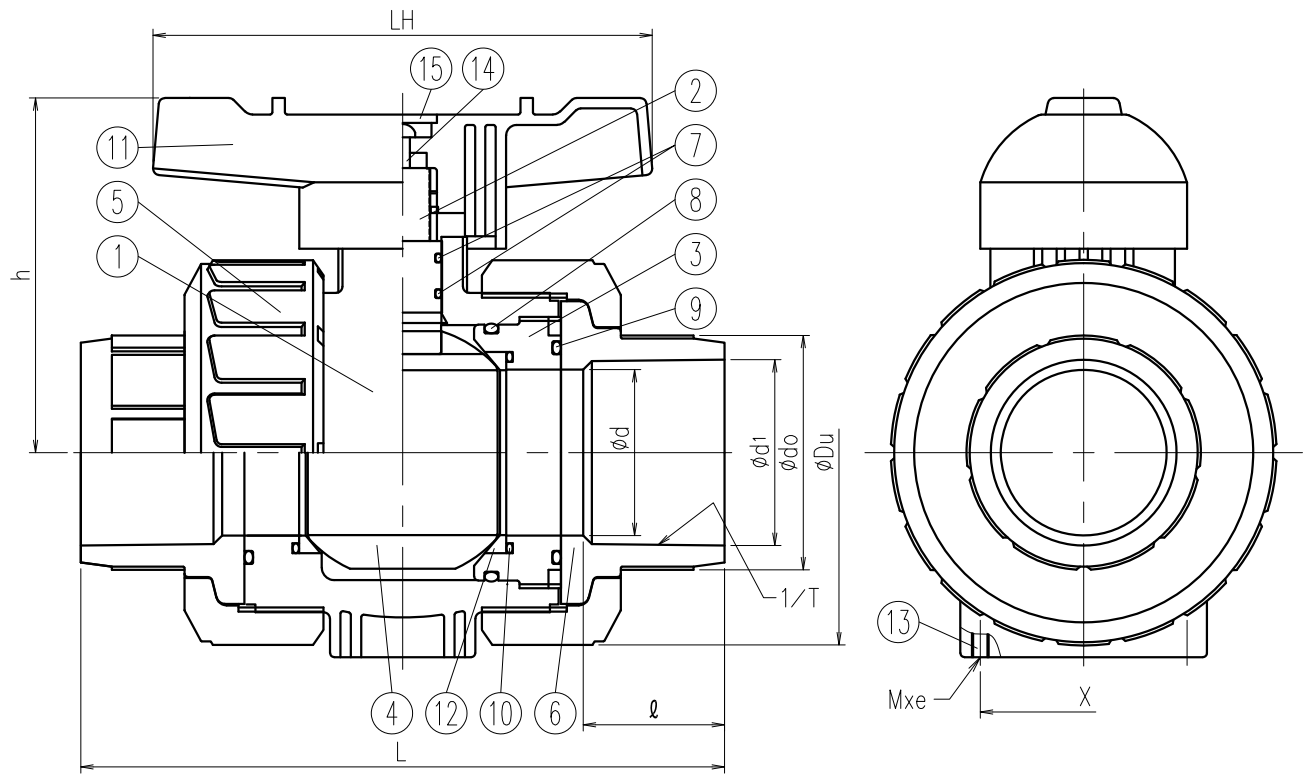
Size	A(B)	ϕd	L																h	ϕDu	LH	Fixing Insert Nut	
			JIS			ASTM				DIN												X	Mxe
			JIS	ASTM	DIN	ϕd_1	1/T	l	ϕd_o	ϕd_1	1/T	l	ϕd_o	ϕd_1	1/T	l	ϕd_o						
□ 15 (1/2)	15	109±3.0	103±3.0	92±3.0	22.3	1/37	22	33	21.54	1/72	22.22	33	20.3	1/65	16	33	53	49	95	27	M5x8		
□ 20 (3/4)	20	132±3.0	119±3.0	107±3.0	26.3	1/42	25	35	26.87	1/85	25.40	35	25.3	1/80	19	35	62	59	95	32	M5x8		
□ 25 (1)	25	143±3.0	133±3.0	121±3.0	32.3	1/43	29	44	33.65	1/75	28.58	44	32.3	1/95	22	44	76	67	123	37	M5x8		
□ 32 (1-1/4)	32	166±3.0	147±3.0	137±3.0	38.4	1/37	32	54	42.42	1/84	31.75	54	40.3	1/115	26	54	84	81	123	42	M5x8		
□ 40 (1-1/2)	40	175±3.0	171±3.0	161±3.0	48.5	1/38	35	66	48.56	1/78	34.93	66	50.3	1/140	31	66	114	98	158	57	M6x10		
□ 50 (2)	50	203±3.0	188±3.0	189±3.0	60.6	1/34	38	77	60.63	1/83	38.10	77	63.3	1/175	38	77	120	120	158	67	M6x10		

Note) Socket dimension is in accordance with the following standard;
 JIS:JIS K6743,ASTM:ASTM D2467 and DIN2501 PN10/PN16 (ISO7005 PN10) for DIN

Client name			Date
Socket Standard	<input type="checkbox"/> JIS <input type="checkbox"/> ASTM <input type="checkbox"/> DIN	Approved by:	
Oil Free	<input type="checkbox"/> YES		

ESLON Ball Valve
 Socket 15 (1/2") -50 (2")
 Drawing No. |BVM1550SXE

SEKISUI SEKISUI CHEMICAL CO.,LTD.



No.	Part Name	Q'TY	Material/Type
1	Body	1	
2	Stem	1	
3	Ball holder	1	□PVC
4	Ball	1	□HT
5	Union nut	2	□C-PVC
6	Socket	2	
7	Stem O-ring	2	
8	Ball holder O-ring	1	□EPDM
9	Union O-ring	2	□FKM
10	Ball seat O-ring	2	
11	Handle	1	ABS
12	Ball Seat	2	PTFE
13	Insert Nut	2	C3604
14	Screw	1	SUS304
15	Handle Cap	1	ABS

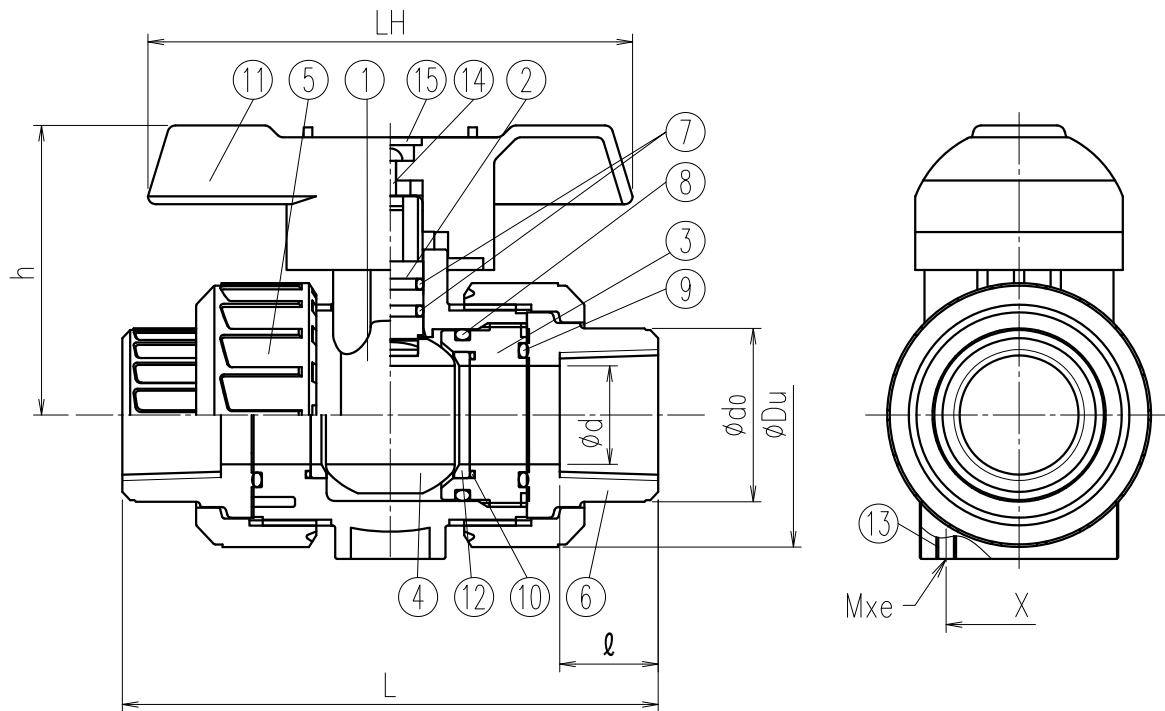
Dimension Table

Unit: mm

Size	A(B)	φd	TS Socket																h	φDu	LH	Fixing Insert Nut	
			L			JIS				ASTM				DIN				X				Mxe	
			JIS	ASTM	DIN	φd1	1/T	ℓ	φdo	φd1	1/T	ℓ	φdo	φd1	1/T	ℓ	φdo						
□ 65 (2 1/2)	65	259±3.0	211±3.0	211±3.0	76.6	1/48	61	96	73.38	1/84	44.45	96	75.3	1/220	44	96	153	150	211	81	M6x10		
□ 80 (3)	80	311±3.0	262±3.0	263±3.0	89.6	1/49	64	113	89.31	1/78	47.63	113	90.3	1/255	51	113	171	186	240	99.7	M8x10		
□ 100 (4)	100	390±3.0	315±3.0	315±3.0	114.7	1/56	84	144	114.76	1/87	57.15	144	110.4	1/203	61	144	202	228	290	119.7	M8x10		

Note) Socket dimension is in accordance with the following standard;
 JIS:JIS K6743,ASTM:ASTM D2467 and DIN2501 PN10/PN16 (ISO7005 PN10) for DIN

Client name		Date
Socket Standard	□JIS □ASTM □DIN	Approved by:
Oil Free	□YES	
ESLON Ball Valve Socket 65 (2 1/2") - 100 (4")		
Drawing No. BVM651HSXE		
SEKISUI SEKISUI CHEMICAL CO.,LTD.		



No.	Part Name	Q'TY	Material/Type
1	Body	1	
2	Stem	1	
3	Ball holder	1	□PVC
4	Ball	1	□PVDF
5	Union nut	2	
6	Thread	2	
7	Stem O-ring	2	
8	Ball holder O-ring	1	□EPDM
9	Union O-ring	2	□FKM
10	Ball seat O-ring	2	
11	Handle	1	ABS
12	Ball Seat	2	PTFE
13	Insert Nut	2	C3604
14	Screw	1	SUS304
15	Handle Cap	1	ABS

Dimension Table

Unit: mm

Size	A(B)	ød	L		ℓ		Thread			ødo	h	øDu	LH	Fixing Insert Nut	
			PVC	PVDF	PVC	PVDF	JIS,DIN	ANSI	DIN					X	Mxe
							Rc	NPT	Rp						
□ 15 (1/2)	15	97±3.0	99±3.0	18	20	1/2	1/2	1/2	30	53	49	95	27	M5x8	
□ 20 (3/4)	20	117±3.0	116±3.0	18	22	3/4	3/4	3/4	35	62	59	95	32	M5x8	
□ 25 (1)	25	128±3.0	136±3.0	23	24	1	1	1	44	76	67	123	37	M5x8	
□ 32 (1·1/4)	32	146±3.0	148±3.0	23	25	1·1/4	1·1/4	1·1/4	54	84	81	123	42	M5x8	
□ 40 (1·1/2)	40	163±3.0	169±3.0	25	28	1·1/2	1·1/2	1·1/2	65	114	98	158	57	M6x10	
□ 50 (2)	50	188±3.0	196±3.0	30	30	2	2	2	77	120	120	158	67	M6x10	

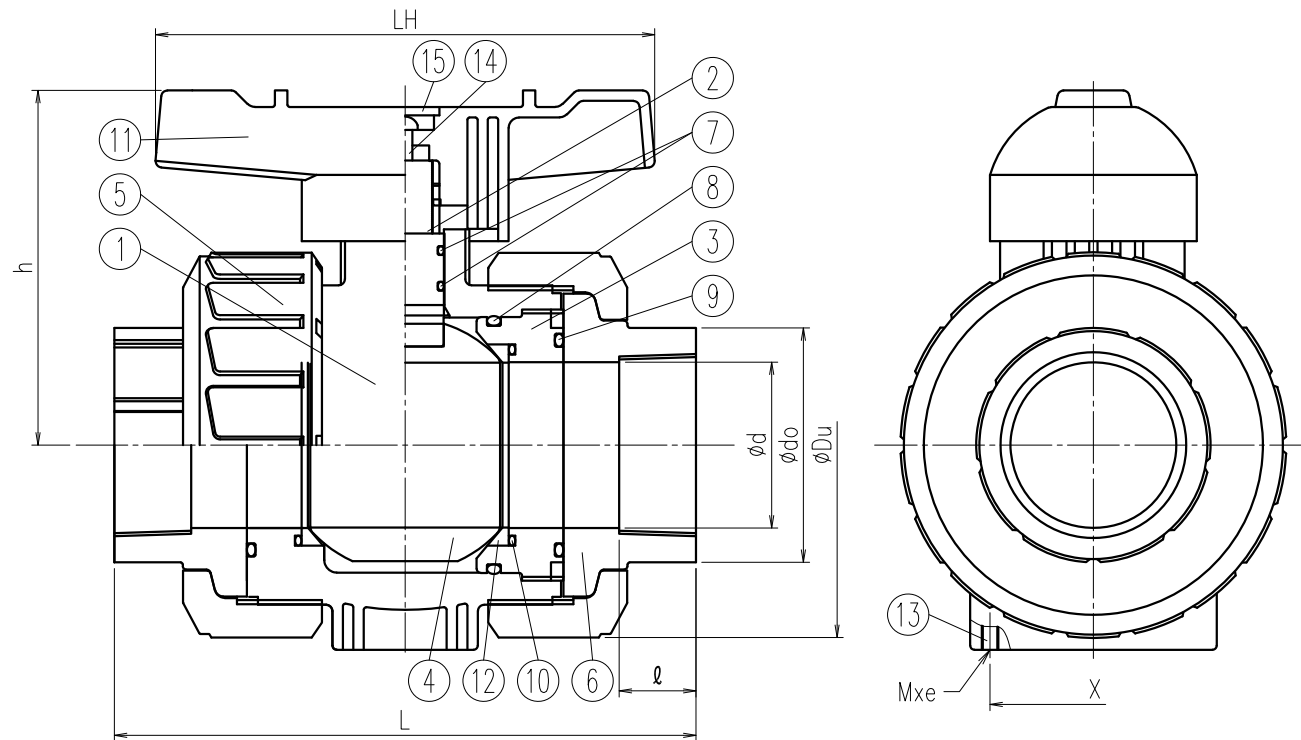
Note) Thread dimension is in accordance with the following standard;
JIS B 0203, ANSI B1.20.1 and DIN2501 PN10/PN16 (ISO7005 PN10)

Client name			Date
Thread Standard	<input type="checkbox"/> Rc	<input type="checkbox"/> NPT	<input type="checkbox"/> Rp
Oil Free	<input type="checkbox"/> YES		
			Approved by:

ESLON Ball Valve
Thread 15 (1/2") - 50 (2")

Drawing No. BV1550NXE

SEKISUI SEKISUI CHEMICAL CO.,LTD.



No.	Part Name	Q'TY	Material/Type
1	Body	1	
2	Stem	1	
3	Ball holder	1	□PVC
4	Ball	1	□PVDF
5	Union nut	2	
6	Thread	2	
7	Stem O-ring	2	
8	Ball holder O-ring	1	□EPDM
9	Union O-ring	2	□FKM
10	Ball seat O-ring	2	
11	Handle	1	ABS
12	Ball Seat	2	PTFE
13	Insert Nut	2	C3604
14	Screw	1	SUS304
15	Handle Cap	1	ABS

Dimension Table

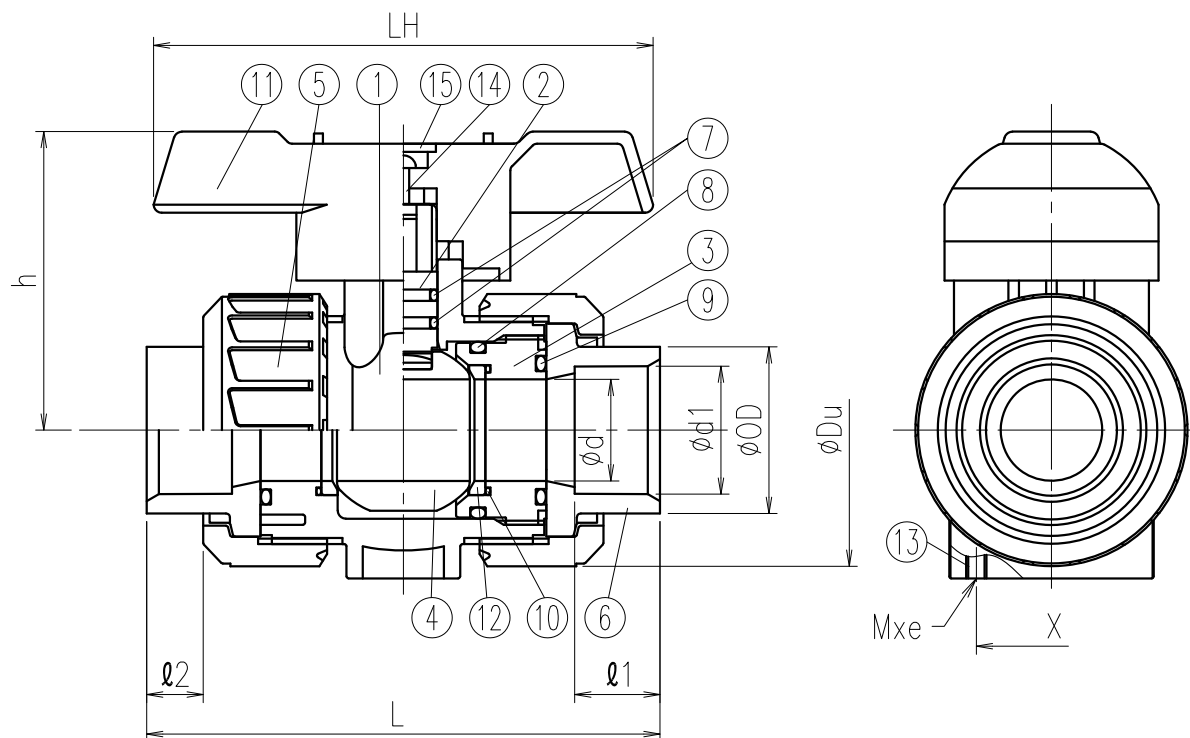
Size	A(B)	φd	Thread						l	φdo	h	φDu	LH	Fixing Insert Nut	
			JIS (Rc) 、 DIN (Rc)		ANSI (NPT)		DIN (Rp)							X	Mxe
			Rc	L	NPT	L	Rp	L							
□ 65 (2 1/2)	65	2-1/2	227±3.0	2-1/2	212±3.0	2-1/2	212±3.0	32	96	153	150	211	81	M6x10	
□ 80 (3)	80	3	278±3.0	3	261±3.0	3	261±3.0	37	113	171	186	240	99.7	M8x10	
□ 100 (4)	100	4	330±3.0	4	315±3.0	4	315±3.0	45	144	202	228	290	119.7	M8x10	

Note) Thread dimension is in accordance with the following standard;
JIS B 0203, ANSI B1.20.1 and DIN2501 PN10/PN16 (ISO7005 PN10)

Unit: mm

Client name			Date
Thread Standard	<input type="checkbox"/> Rc	<input type="checkbox"/> NPT	<input type="checkbox"/> Rp
Oil Free	<input type="checkbox"/> YES		
Approved by:			
ESLON Ball Valve Thread 65 (2-1/2") - 100 (4")			
Drawing No. BV651HNXE			
SEKISUI SEKISUI CHEMICAL CO.,LTD.			

No.	Part Name	Q'TY	Material/Type
1	Body	1	PP
2	Stem	1	
3	Ball holder	1	
4	Ball	1	
5	Union nut	2	
6	Socket	2	□EPDM
7	Stem O-ring	2	
8	Ball holder O-ring	1	
9	Union O-ring	2	
10	Ball seat O-ring	2	
11	Handle	1	ABS
12	Ball Seat	2	PTFE
13	Insert Nut	2	C3604
14	Screw	1	SUS304
15	Handle Cap	1	ABS

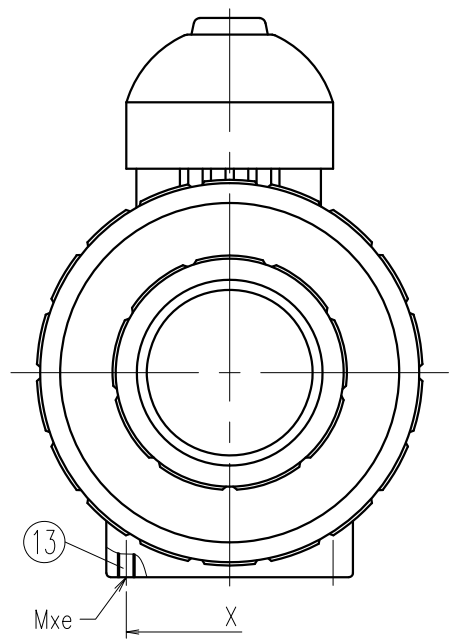
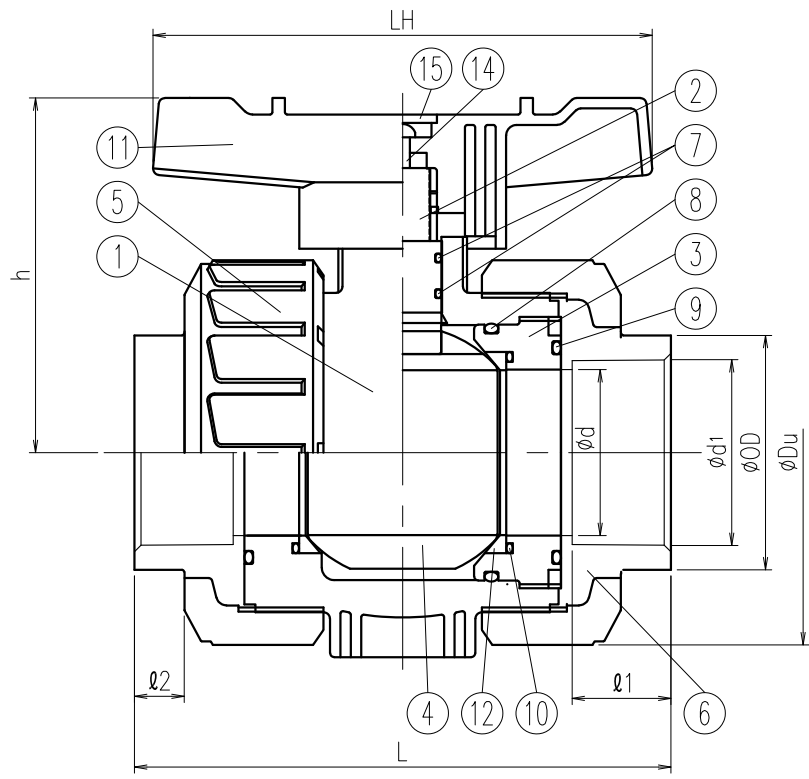


Dimension Table

Unit: mm

Size	A(B)	ød	L	Socket Welding				h	øDu	LH	Fixing Insert Nut	
				ød1	l1	l2	øOD				X	Mxe
□ 15 (1/2)	15	15	103±3.0	19.5	17.5	12.0	27	53	49	95	27	M5x8
□ 20 (3/4)	20	20	114±3.0	24.5	19.0	13.0	33	62	59	95	32	M5x8
□ 25 (1)	25	25	126±3.0	31.5	21.0	14.5	41	76	67	123	37	M5x8
□ 32 (1·1/4)	32	32	141±3.0	39.4	23.5	18.0	50	84	81	123	42	M5x8
□ 40 (1·1/2)	40	40	162±3.0	49.4	26.5	16.0	61	114	98	158	57	M6x10
□ 50 (2)	50	50	185±3.0	62.5	30.5	20.0	76	120	120	158	67	M6x10

Client name		Date
Oil Free	<input type="checkbox"/> YES	Approved by:
ESLON Ball Valve Socket Welding Type 15 (1/2") - 50 (2")		
Drawing No. BVM1550PXE		
SEKISUI SEKISUI CHEMICAL CO.,LTD.		



No.	Part Name	Q'TY	Material/Type
1	Body	1	PP
2	Stem	1	
3	Ball holder	1	
4	Ball	1	
5	Union nut	2	EPDM
6	Socket	2	
7	Stem O-ring	2	
8	Ball holder O-ring	1	FKM
9	Union O-ring	2	FKM
10	Ball seat O-ring	2	
11	Handle	1	ABS
12	Ball Seat	2	PTFE
13	Insert Nut	2	C3604
14	Screw	1	SUS304
15	Handle Cap	1	ABS

Dimension Table

Unit: mm

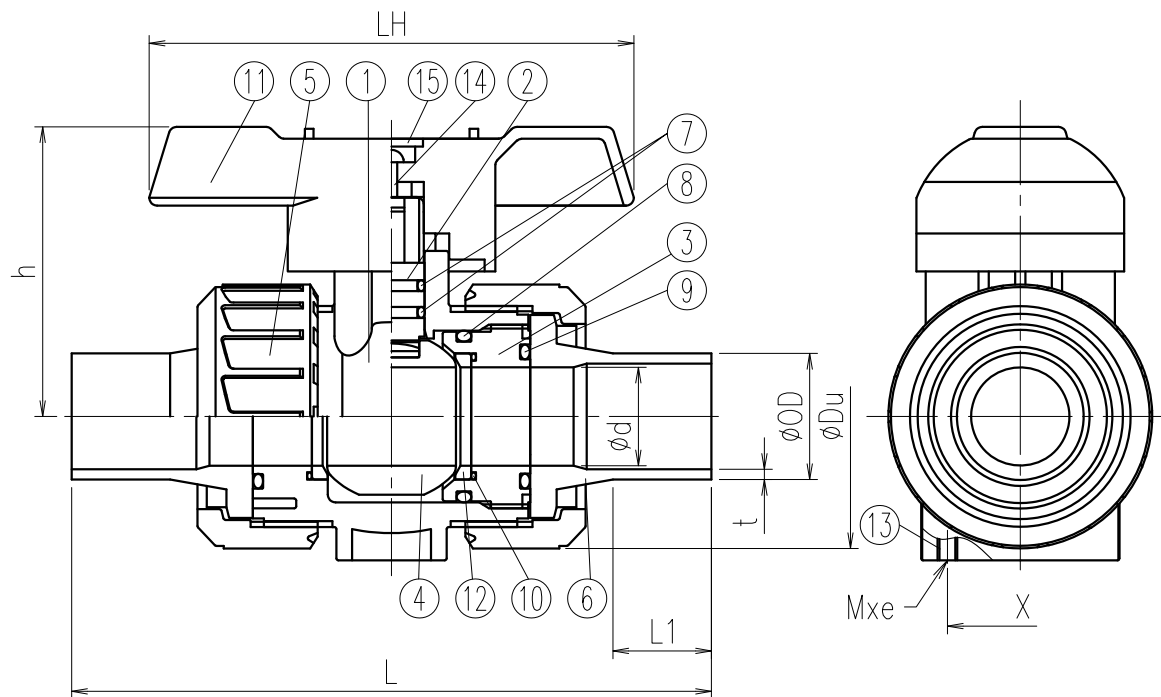
Size	A(B)	ϕd	L	Socket Welding				h	ϕDu	LH	Fixing Insert Nut	
				$\phi d1$	l1	l2	ϕOD				X	Mxe
□ 65 (2 1/2)		65	204±3.0	74.9	34	21.0	90	153	150	211	81	M6x10
□ 80 (3)		80	264±3.0	89.9	37	26.5	108	171	186	240	99.7	M8x10
□ 100 (4)		100	317±3.0	110.0	41	31.5	131	202	228	290	119.7	M8x10

Note) Socket Welding dimension is in accordance with the following standard;DIN2501 PN10/PN16 (ISO7005 PN10)

Client name		Date
Oil Free	<input type="checkbox"/> YES	Approved by:

ESLON Ball Valve
 Socket Welding Type 65 (2 1/2") - 100 (4")
 Drawing No. | BVM651HPXE

SEKISUI SEKISUI CHEMICAL CO.,LTD.



No.	Part Name	Q'TY	Material/Type
1	Body	1	
2	Stem	1	
3	Ball holder	1	□PP
4	Ball	1	□PVDF
5	Union nut	2	
6	Butt Spigot	2	
7	Stem O-ring	2	
8	Ball holder O-ring	1	□EPDM
9	Union O-ring	2	□FKM
10	Ball seat O-ring	2	
11	Handle	1	ABS
12	Ball Seat	2	PTFE
13	Insert Nut	2	C3604
14	Screw	1	SUS304
15	Handle Cap	1	ABS

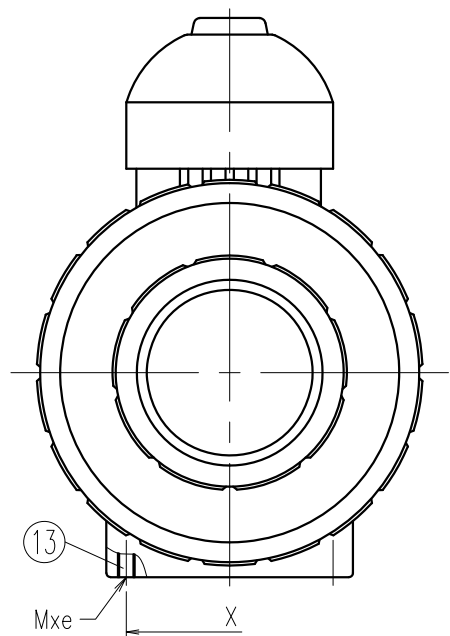
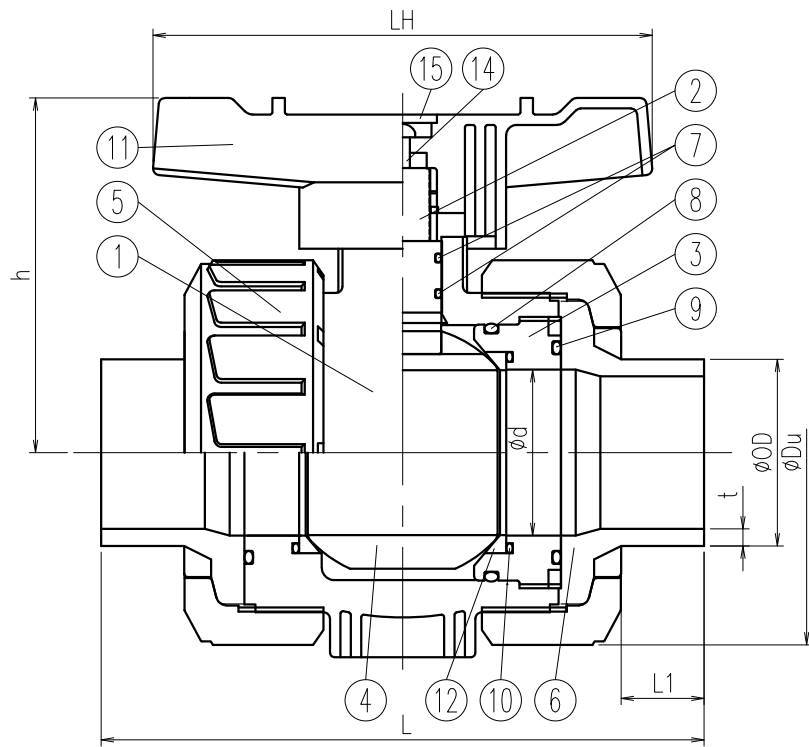
Dimension Table

Unit: mm

Size	A(B)	ød	L	Butt Spigot						h	øDu	LH	Fixing Insert Nut	
				PP			PVDF						X	Mxe
				L1	øOD	t	L1	øOD	t					
□ 15 (1/2)	15	143±3.0	30	20	1.9	30	20	1.9	53	49	95	27	M5x8	
□ 20 (3/4)	20	152±3.0	24	25	2.3	24	25	1.9	62	59	95	32	M5x8	
□ 25 (1)	25	161±3.0	24	32	2.9	24	32	2.4	76	67	123	37	M5x8	
□ 32 (1.1/4)	32	167±3.0	25	40	3.7	25	40	2.4	84	81	123	42	M5x8	
□ 40 (1.1/2)	40	190±3.0	24	50	4.6	24	50	3.0	114	98	158	57	M6x10	
□ 50 (2)	50	216±3.0	28	63	5.8	28	63	3.0	120	120	158	67	M6x10	

Note) Butt Spigot dimension is in accordance with the following standard;PP:DIN8077/PVDF:ISO10931

Client name		Date
Oil Free	<input type="checkbox"/> YES	Approved by:
ESLON Ball Valve BUTT Spigot Type 15 (1/2") -50 (2")		
Drawing No. BVM1550BXE		
SEKISUI SEKISUI CHEMICAL CO.,LTD.		



No.	Part Name	Q'TY	Material/Type
1	Body	1	
2	Stem	1	
3	Ball holder	1	□PP
4	Ball	1	□PVDF
5	Union nut	2	
6	Butt Spigot	2	
7	Stem O-ring	2	
8	Ball holder O-ring	1	□EPDM
9	Union O-ring	2	□FKM
10	Ball seat O-ring	2	
11	Handle	1	ABS
12	Ball Seat	2	PTFE
13	Insert Nut	2	C3604
14	Screw	1	SUS304
15	Handle Cap	1	ABS

Dimension Table

Unit: mm

Size	A(B)	ød	L	Butt Spigot						h	øDu	LH	Fixing Insert Nut	
				PP			PVDF						X	Mxe
				L1	øOD	t	L1	øOD	t					
□ 65 (2 1/2)	65	208±3.0	23	75	6.8	23	75	3.6	153	150	211	81	M6x10	
□ 80 (3)	80	301±3.0	45	90	8.2	45	90	4.3	171	186	240	99.7	M8x10	
□ 100 (4)	100	340±3.0	43	110	10.0	43	110	5.3	202	228	290	119.7	M8x10	

Note) Socket Welding dimension is in accordance with the following standard;
DIN2501 PN10/PN16 (ISO7005 PN10) for DIN

Client name		Date
Oil Free	<input type="checkbox"/> YES	Approved by:
ESLON Ball Valve BUTT Spigot Type 65 (2 1/2") - 100 (4") Drawing No. BVM651HBXE		
SEKISUI SEKISUI CHEMICAL CO.,LTD.		