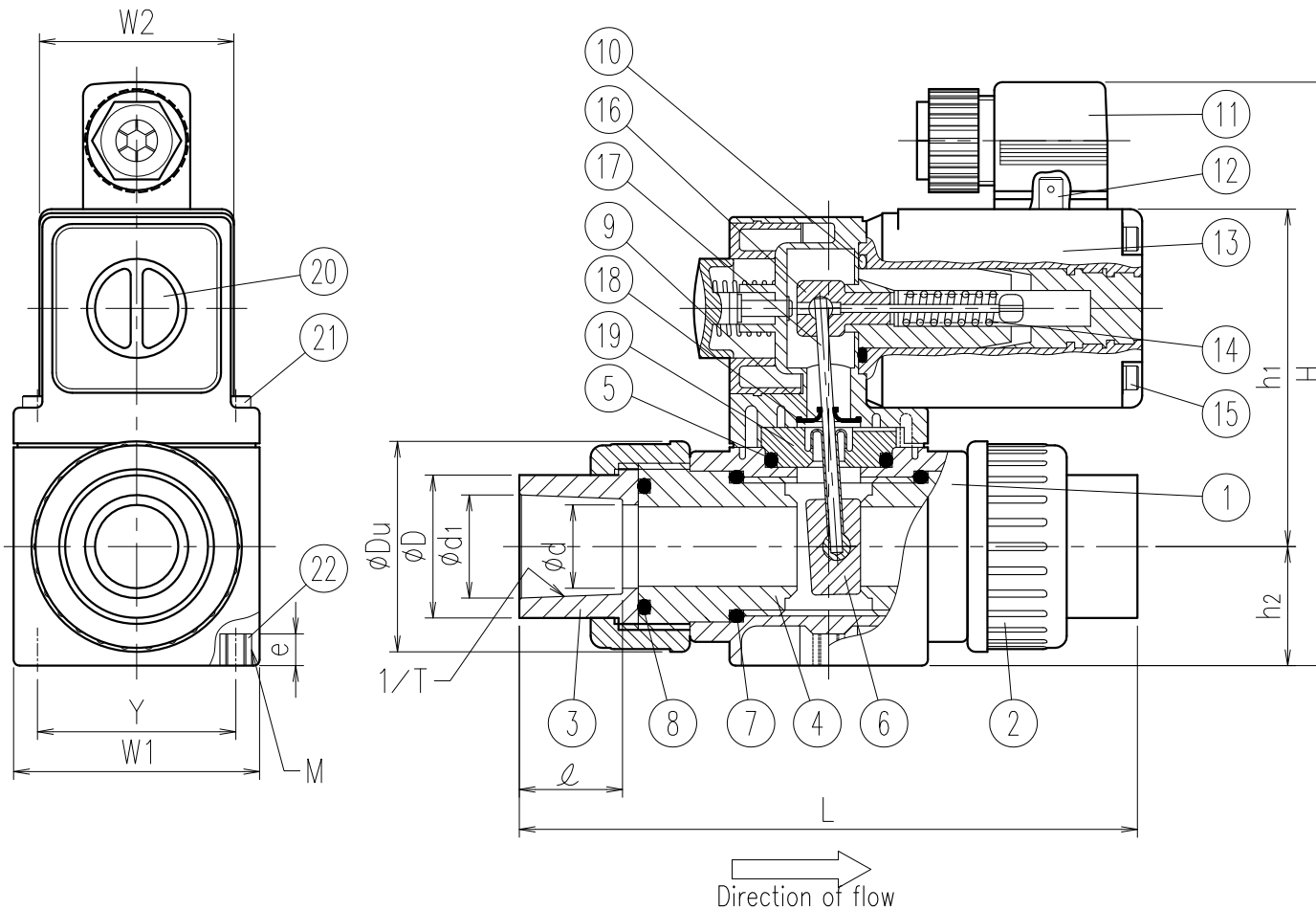


| No. | Part name | Q'ty | Material/Type |
|-----|--------------------|------|-----------------|
| 1 | Body | 1 | PVC |
| 2 | Union Nut | 2 | |
| 3 | TS Socket | 2 | |
| 4 | Valve Seat | 2 | |
| 5 | O-Ring | 1 | □EPDM |
| 6 | Disc | 1 | |
| 7 | O-Ring | 2 | □FKM |
| 8 | O-Ring | 2 | |
| 9 | Packing | 1 | FKM |
| 10 | O-Ring | 1 | NBR |
| 11 | DIN Plug | 1 | PA |
| 12 | Terminal | - | - |
| 13 | Actuator | 1 | Epoxy |
| 14 | Spring | 1 | SUS304CSP |
| 15 | Slotted Head Screw | 4 | SUS316 |
| 16 | Spule | 1 | - |
| 17 | Flapper | 1 | SS400+Ni coated |
| 18 | Seal Plate | 1 | SUS316 |
| 19 | Diaphragm | 1 | PTFE |
| 20 | Manual Button | 1 | PA |
| 21 | Slotted Head Screw | 2 | SUS316 |
| 22 | Insert Nut | 2 | SUS316 |

* A cable should surely use $\phi 6\sim 7$.



Dimension Table

Unit: mm

| Size | A(B) | ϕd | L | TS Socket | | | | H | h1 | h2 | ϕDu | W1 | W2 | The screw for fixation | | Weight kg/unit | Cv Value | Pressure to be used MPa (at20°C) | |
|-----------|------|----------|------|-----------|------|--------|----------|------|----|----|-----------|----|----|------------------------|-----|----------------|----------|----------------------------------|---------|
| | | | | $\phi d1$ | 1/T | ℓ | ϕD | | | | | | | Y | Mxe | | | AC/50Hz,DC | AC/60Hz |
| □ 13(3/8) | 13 | 138±3.0 | 18.3 | 1/33 | 16.5 | 22 | 147 | 85.5 | 30 | 34 | 62 | 49 | 50 | M5x8 | 1.2 | 2.3 | 0~0.3 | 0~0.2 | |
| □ 15(1/2) | 16 | 149±3.0 | 22.3 | 1/37 | 22 | 27 | 147 | 85.5 | 30 | 42 | 62 | 49 | 50 | M5x8 | 1.2 | 5.3 | 0~0.1 | 0~0.07 | |
| □ 20(3/4) | 20 | 160±3.0 | 26.3 | 1/42 | 25 | 36 | 147 | 85.5 | 30 | 52 | 62 | 49 | 50 | M5x8 | 1.2 | 7.0 | 0~0.05 | 0~0.03 | |

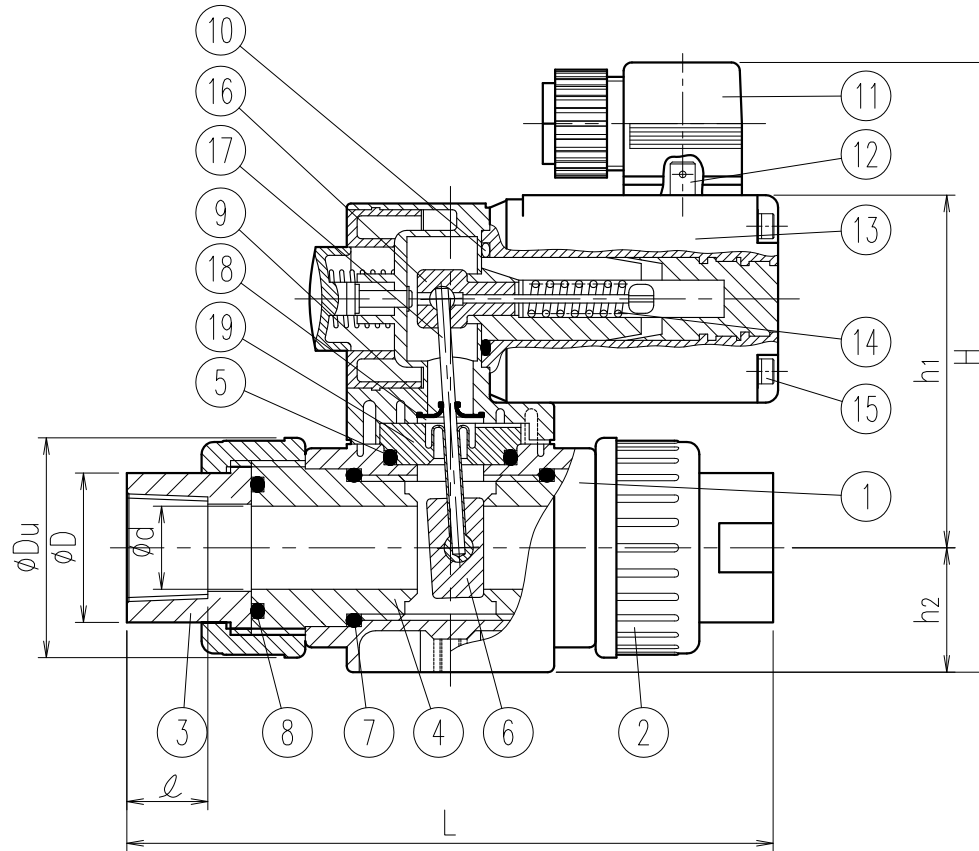
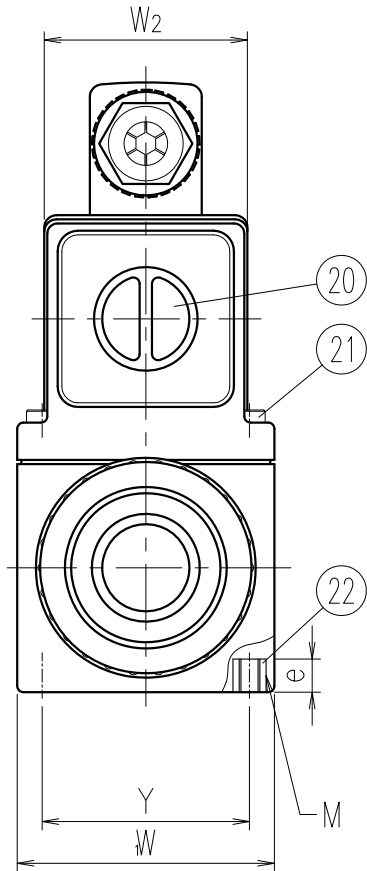
Note) 1. Socket dimension is in accordance with the following standard;JIS K6743

2. If a fixing insert bolt is used, it should not be screwed in beyond dimension e.

| | | |
|-------------|---|--------------|
| Client name | | Date |
| Voltage | <input type="checkbox"/> DC24V <input type="checkbox"/> AC100V <input type="checkbox"/> AC200V | Approved by: |

ESLON
Solenoid Valve Type131 TS-Socket Type 13-20A
Drawing No. | S31320SE

SEKISUI SEKISUI CHEMICAL CO.,LTD.



Direction of flow →

| No. | Part name | Q'ty | Material/Type |
|-----|--------------------|------|-----------------|
| 1 | Body | 1 | PVC |
| 2 | Union Nut | 2 | |
| 3 | Thread Sockt | 2 | |
| 4 | Valve Seat | 2 | |
| 5 | O-Ring | 1 | □EPDM |
| 6 | Disc | 1 | |
| 7 | O-Ring | 2 | □FKM |
| 8 | O-Ring | 2 | |
| 9 | Packing | 1 | FKM |
| 10 | O-Ring | 1 | NBR |
| 11 | DIN Plug | 1 | PA |
| 12 | Terminal | - | - |
| 13 | Actuator | 1 | Epoxy |
| 14 | Spring | 1 | SUS304CSP |
| 15 | Slotted Head Screw | 4 | SUS316 |
| 16 | Spule | 1 | - |
| 17 | Flapper | 1 | SS400+Ni coated |
| 18 | Seal Plate | 1 | SUS316 |
| 19 | Diaphragm | 1 | PTFE |
| 20 | Manual Button | 1 | PA |
| 21 | Slotted Head Screw | 2 | SUS316 |
| 22 | Insert Nut | 2 | SUS316 |

* A cable should surely use φ6~7.

Dimension Table

Unit: mm

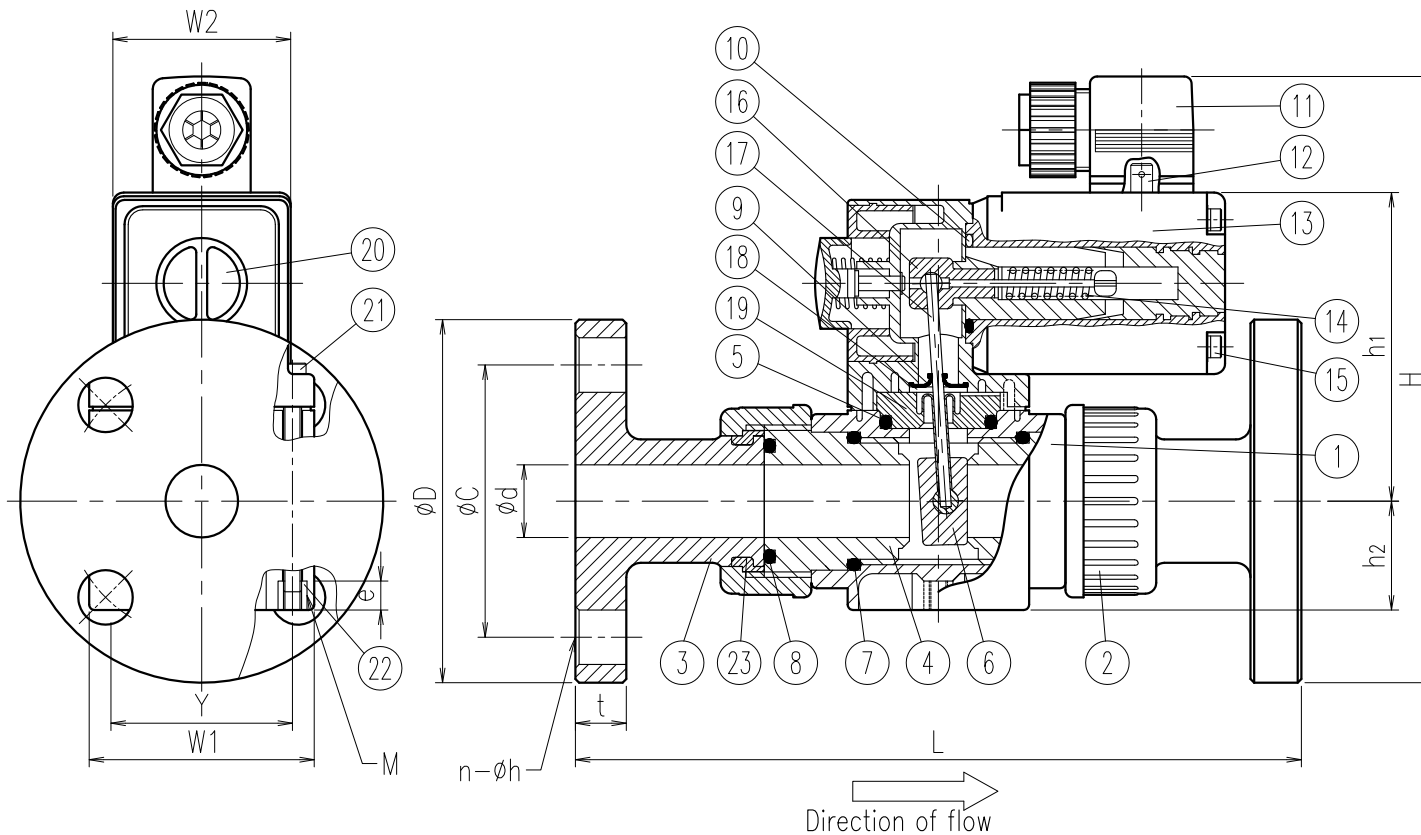
| Size | A(B) | φd | L | Thread | | | H | h1 | h2 | φDu | W1 | W2 | The screw for fixation | | Weight kg/unit | Cv Value | Pressure to be used MPa (at20°C) | |
|-----------|------|---------|-------|--------|----|-----|------|----|----|-----|----|----|------------------------|-----|----------------|----------|----------------------------------|---------|
| | | | | Rc | ℓ | φD | | | | | | | Y | Mxe | | | AC/50Hz,DC | AC/60Hz |
| | | | | | | | | | | | | | | | | | | |
| □ 13(3/8) | 13 | 138±3.0 | Rc3/8 | 12 | 22 | 147 | 85.5 | 30 | 34 | 62 | 49 | 50 | M5x8 | 1.2 | 2.3 | 0~0.3 | 0~0.2 | |
| □ 15(1/2) | 16 | 148±3.0 | Rc1/2 | 16 | 27 | 147 | 85.5 | 30 | 42 | 62 | 49 | 50 | M5x8 | 1.2 | 5.3 | 0~0.1 | 0~0.07 | |
| □ 20(3/4) | 20 | 158±3.0 | Rc3/4 | 20 | 36 | 147 | 85.5 | 30 | 52 | 62 | 49 | 50 | M5x8 | 1.2 | 7.0 | 0~0.05 | 0~0.03 | |

Note) 1. Thread dimension is in accordance with the following standard; JIS B 0203
 2. If a fixing insert bolt is used, it should not be screwed in beyond dimension e.

| | | |
|-------------|---|--------------|
| Client name | | Date |
| Voltage | <input type="checkbox"/> DC24V <input type="checkbox"/> AC100V <input type="checkbox"/> AC200V | Approved by: |

ESLON
 Solenoid Valve Type131 Thread Socket Type 13-20
 Drawing No. | S31320NE

SEKISUI SEKISUI CHEMICAL CO.,LTD.



| No. | Part name | Q'ty | Material/Type |
|-----|--------------------|------|-----------------|
| 1 | Body | 1 | PVC |
| 2 | Union Nut | 2 | |
| 3 | Flange | 2 | |
| 4 | Valve Seat | 2 | |
| 5 | O-Ring | 1 | □EPDM |
| 6 | Disc | 1 | |
| 7 | O-Ring | 2 | □FKM |
| 8 | O-Ring | 2 | |
| 9 | Packing | 1 | FKM |
| 10 | O-Ring | 1 | NBR |
| 11 | DIN Plug | 1 | PA |
| 12 | Terminal | - | - |
| 13 | Actuator | 1 | Epoxy |
| 14 | Spring | 1 | SUS304CSP |
| 15 | Slotted Head Screw | 4 | SUS316 |
| 16 | Spule | 1 | - |
| 17 | Flapper | 1 | SS400+Ni coated |
| 18 | Seal Plate | 1 | SUS316 |
| 19 | Diaphragm | 1 | PTFE |
| 20 | Manual Button | 1 | PA |
| 21 | Slotted Head Screw | 2 | SUS316 |
| 22 | Insert Nut | 2 | SUS316 |
| 23 | Set Ring | 2 | PVDF |

* A cable should surely use Ø6~7.

Dimension Table

Unit: mm

| Size | A(B) | Ød | L | Flange | | | | H | h1 | h2 | ØDu | W1 | W2 | The screw for fixation | | Weight kg/unit | Cv Value | Pressure to be used MPa (at20°C) | |
|-----------|------|---------|-----|--------|------|------|-----|------|----|----|-----|----|----|------------------------|-----|----------------|----------|----------------------------------|---------|
| | | | | ØD | ØC | n-Øh | t | | | | | | | Y | Mxe | | | AC/50Hz,DC | AC/60Hz |
| □ 15(1/2) | 16 | 202±1.5 | 95 | 70 | 4-15 | 14 | 165 | 85.5 | 30 | 42 | 62 | 49 | 50 | M5x8 | 1.2 | 5.3 | 0~0.1 | 0~0.07 | |
| □ 20(3/4) | 20 | 204±1.5 | 100 | 75 | 4-15 | 14 | 167 | 85.5 | 30 | 52 | 62 | 49 | 50 | M5x8 | 1.2 | 7.0 | 0~0.05 | 0~0.03 | |

- Note) 1. Flange dimension is in accordance with the following standard;JIS B2220: 2004
 2. If a fixing insert bolt is used, it should not be screwed in beyond dimension e.

| | | |
|---|---|--------------|
| Client name | | Date |
| Voltage | <input type="checkbox"/> DC24V <input type="checkbox"/> AC100V <input type="checkbox"/> AC200V | Approved by: |
| ESLON | | |
| Solenoid Valve Type131 Flange Type 15-20A | | |
| Drawing No. S31520FE | | |
| SEKISUI SEKISUI CHEMICAL CO.,LTD. | | |