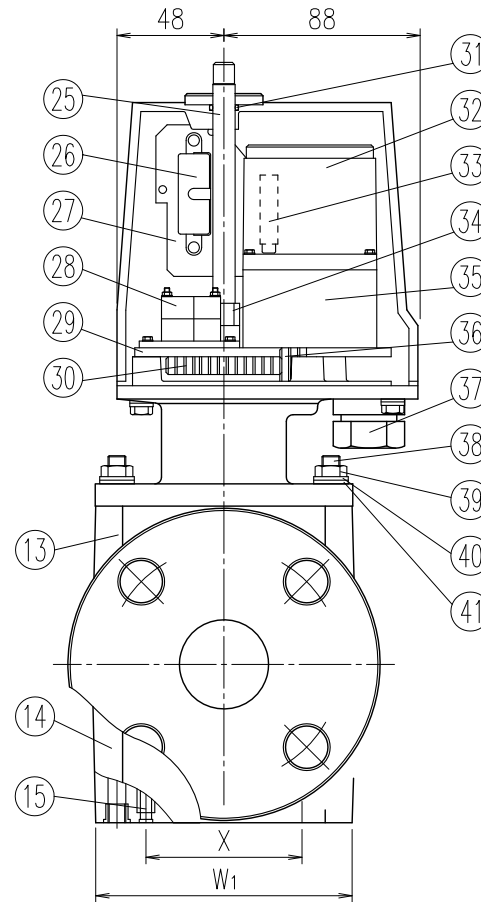
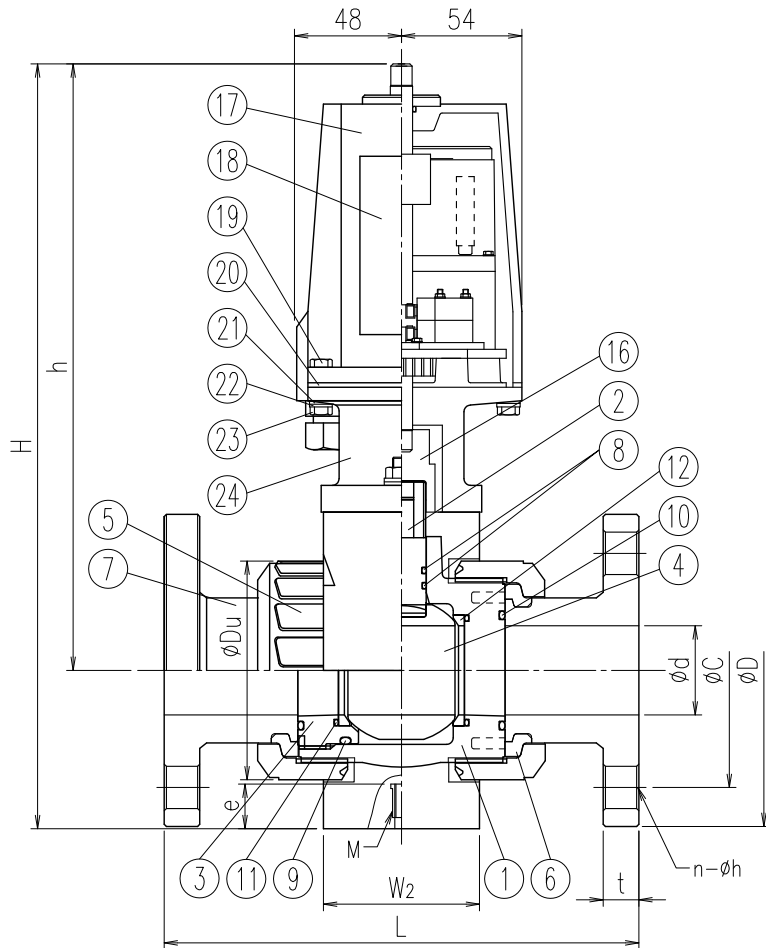


No.	Part Name	Q'TY	Material/Type	No.	Part Name	Q'TY	Material/Type
39	Hexagon Nut	2	SUS304	1	Body	1	
40	Spring Washer	2	SUS304	2	Stem	1	□PVC
41	Washer	2	SUS304	3	Ball holder	1	□DHT
				4	Ball	1	□CPVC
				5	Union nut	2	□PP
				6	Set ring	2	□PVDF
				7	Flange	2	



No.	Part Name	Q'TY	Material/Type
8	Stem O-ring※ 1)	1	15-20A 25-50A
9	Ball holder O-ring	2	□EPDM
10	Union O-ring	2	□FKM
11	Ball seat O-ring	2	
12	Ball Seat	2	PTFE
13	Upper mount	1	FRP
14	Lower mount	1	FRP
15	Fixing Insert Nut	2	C3601
16	Drive Shaft	1	SUS303
17	Cover	1	AC-4+Epoxy paint
18	Name Plate	1	AL-P
19	Hexagonal Bolt	4	SUS304
20	Cover Gasket	1	NR
21	Spring Washer	4	SUS304
22	Washer	4	SUS304
23	Hexagon Nut	4	SUS304
24	Yoke	1	AC-7+Epoxy paint
25	Manual Open-Close Handle	1	SUS303
26	Capacitor	1	-
27	Terminal Stand	1	Phenol resin
28	Micro Switch	2	OMRON: V-105-1A4
29	Motor Base	1	AC-7
30	Gear	1	S45C
31	O-Ring	1	SBR
32	Reversible Motor	1	-
33	Thermal Protector	1	-
34	Cam	2	SS400
35	Gear Head	1	-
36	Gear	1	S45C
37	Electric Conduit Gland	1	G1/2
38	Stud Bolt	2	SUS304

※ 1) Stem O-Ring material will be FKM+PTFE in case of Oil Free.

Dimension Table

Size	A(B)	φd	L	FLANGE												H	h	φDu	W1	W2	Actuator Type	Fixing Insert Nut	
				JIS10K				ANSI				DIN										X	Mxe
				φD	φC	n-φh	t	φD	φC	n-φh	t	φD	φC	n-φh	t								
□ 15 (1/2)	15	143±1.5	95	70	4-15	14	89.0	60.5	4-16	11.5	95	65	4-14	11	278	229	49	92	50	EB-4	50	M6x15	
□ 20 (3/4)	20	172±1.5	100	75	4-15	14	98.0	70.0	4-16	13.0	105	75	4-14	12	283	232	59	92	50	EB-4	50	M6x15	
□ 25 (1)	25	187±1.5	125	90	4-19	14	108.0	79.5	4-16	14.5	115	85	4-14	14	310	246	67	92	50	EB-4	50	M6x15	
□ 32 (1·1/4)	32	190±1.5	135	100	4-19	16	117.5	89.0	4-16	16.0	140	100	4-18	15	321	252	81	98	60	EB-4	55	M6x15	
□ 40 (1·1/2)	40	212±1.5	140	105	4-19	16	127.0	98.5	4-16	17.5	150	110	4-18	16	342	271	98	117	70	EB-4	70	M8x20	

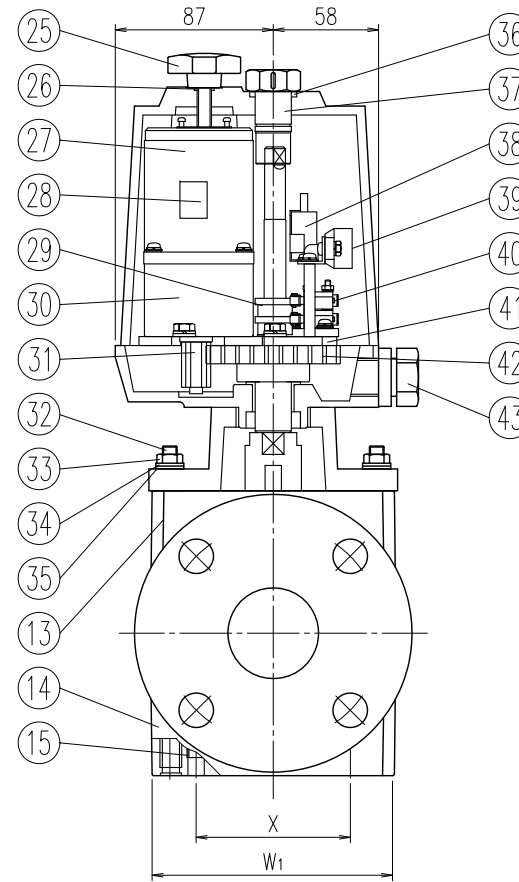
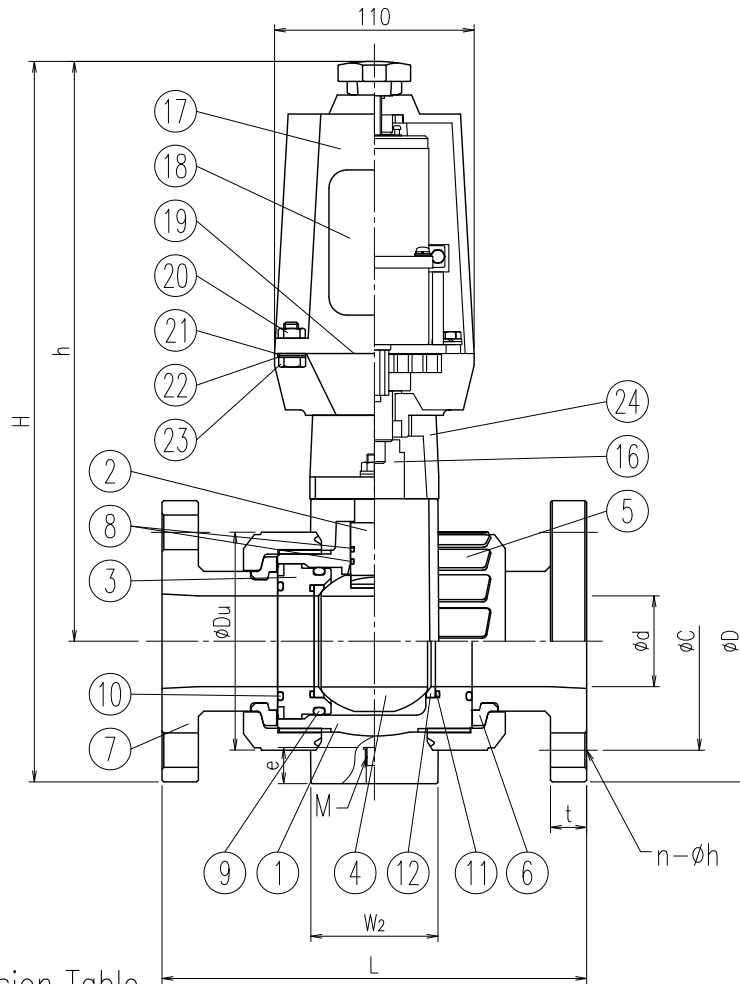
Unit: mm

Note)

1. Flange dimension is in accordance with the following standard; JIS B 2220 for JIS10K, ANSI B16.5 for ANSI and DIN2501 PN10/PN16 (ISO7005 PN10) for DIN
2. If a fixing insert bolt is used, it should not be screwed in beyond dimension e.

Client name		Date	
Flange Standard	□JIS10K □ANSI □DIN	Approved by:	
Voltage	□AC100V □AC200V		
Oil Free	□YES		
ESLON Electric Ball Valve KS-Type			
Flange Type 15-40A			
Drawing No. BVK1540FXE			
SEKISUI SEKISUI CHEMICAL CO.,LTD.			

No.	Part Name	Q'TY	Material/Type	No.	Part Name	Q'TY	Material/Type
39	Terminal Stand	1	Phenol resin	1	Body	1	
40	Micro Switch	2	OMRON: V-105-1A4	2	Stem	1	□PVC
41	Motor Base	1	AC-7	3	Ball holder	1	□HT
42	Gear	1	S45C	4	Ball	1	□CPVC
43	Electric Conduit Gland	1	G1/2	5	Union nut	2	□PP



No.	Part Name	Q'TY	Material/Type
6	Set ring	2	□PVDF
7	Flange	2	
8	Stem O-ring※1)	1	15-20A 25-50A
9	Ball holder O-ring	2	□EPDM
10	Union O-ring	2	□FKM
11	Ball seat O-ring	2	
12	Ball Seat	2	PTFE
13	Upper mount	1	FRP
14	Lower mount	1	FRP
15	Fixing Insert Nut	2	C3601
16	Drive Shaft	1	SUS303
17	Cover	1	AC-4+Epoxy paint
18	Name Plate	1	AL-P
19	Cover Gasket	1	NR
20	Hexagonal Bolt	4	SUS304
21	Spring Washer	4	SUS304
22	Washer	4	SUS304
23	Hexagon Nut	4	SUS304
24	Yoke	1	AC-7+Epoxy paint
25	Manual Open-Close Screw	1	Epoxy paint
26	O-Ring	1	SBR
27	Reversible Motor	1	-
28	Thermal Protector	1	-
29	Cam	2	AC-7
30	Gear Head	1	-
31	Gear	1	S45C
32	Stud Bolt	2	SUS304
33	Hexagon Nut	2	SUS304
34	Spring Washer	2	SUS304
35	Washer	2	SUS304
36	O-Ring	1	SBR
37	Manual Open-Close shaft	1	SUS303
38	Capacitor	1	-

※1) Stem O-Ring material will be FKM+PTFE in case of Oil Free.

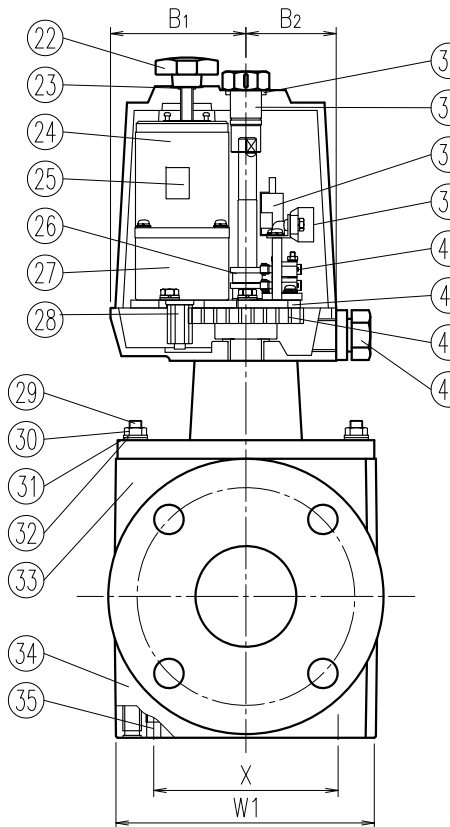
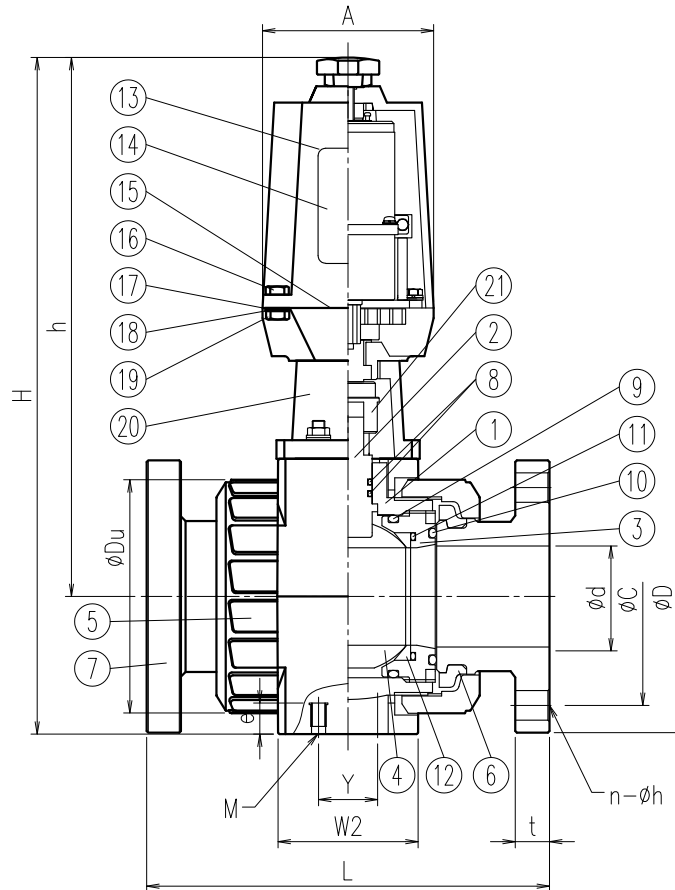
Dimension Table

Size	A (B)	φd	L	FLANGE												H	h	φD _u	W1	W2	Actuator Type	Fixing Insert Nut	
				JIS10K				ANSI				DIN										X	Mxe
				φD	φC	n-φh	t	φD	φC	n-φh	t	φD	φC	n-φh	t								
□	50(2)	50	234±1.5	155	120	4-19	20	152.0	120.5	4-19	19.5	165	125	4-18	18	397	319	120	135	70	EB-06	85	M8x20

Note) 1. Flange dimension is in accordance with the following standard;
 JIS B 2220 for JIS10K, ANSI B16.5 for ANSI and DIN2501 PN10/PN16 (ISO7005 PN10) for DIN
 2. If a fixing insert bolt is used, it should not be screwed in beyond dimension e.

Client name	Date
Flange Standard <input type="checkbox"/> JIS10K <input type="checkbox"/> ANSI <input type="checkbox"/> DIN	Approved by:
Voltage <input type="checkbox"/> AC100V <input type="checkbox"/> AC200V	
Oil Free <input type="checkbox"/> YES	
ESLON Electric Ball Valve KS-Type Flange Type 50A	
Drawing No. BVK50FXE	
SEKISUI SEKISUI CHEMICAL CO.,LTD.	

No.	Part Name	Q'TY	Material/Type	No.	Part Name	Q'TY	Material/Type
39	Terminal Stand	1	Phenol resin	1	Body	1	
40	Micro Switch	2	OMRON: V-105-1A4 (65A)	2	Stem	1	□PVC
			OMRON: V-156-1A5 (80,100A)	3	Ball holder	2	□HT
41	Motor Base	1	AC-7	4	Ball	1	□CPVC
42	Gear	1	S45C	5	Union nut	2	□PP
43	Electric Conduit Gland	1	G1/2	6	Set ring	2	□PVDF
				7	Flange	2	
				8	Stem O-ring*1)	2	
				9	Ball holder O-ring	2	□EPDM
				10	Union O-ring	2	□FKM
				11	Ball seat O-ring	2	
				12	Ball Seat	2	PTFE
				13	Cover	1	AC-4+Epoxy paint
				14	Name Plate	1	AL-P
				15	Cover Gasket	1	NR
				16	Hexagonal Bolt	4	SUS304
				17	Spring Washer	4	SUS304
				18	Washer	4	SUS304
				19	Hexagon Nut	4	SUS304
				20	Yoke	1	AC-7+Epoxy paint
				21	Drive Shaft	1	SUS303
				22	Manual Open-Close Screw	1	Epoxy paint
				23	O-Ring	1	SBR
				24	Reversible Motor	1	-
				25	Thermal Protector	1	-
				26	Cam	2	AC-7
				27	Gear Head	1	-
				28	Gear	1	S45C
				29	Stud Bolt	-	SUS304
				30	Hexagon Nut	-	SUS304
				31	Spring Washer	-	SUS304
				32	Washer	-	SUS304
				33	Upper mount	1	FRP
				34	Lower mount	1	FRP
				35	Fixing Insert Nut	-	C3601
				36	O-Ring	1	SBR
				37	Manual Open-Close shaft	1	SUS303
				38	Capacitor	1	-



*1) Stem O-Ring material will be FKM+PTFE in case of Oil Free.

Dimension Table

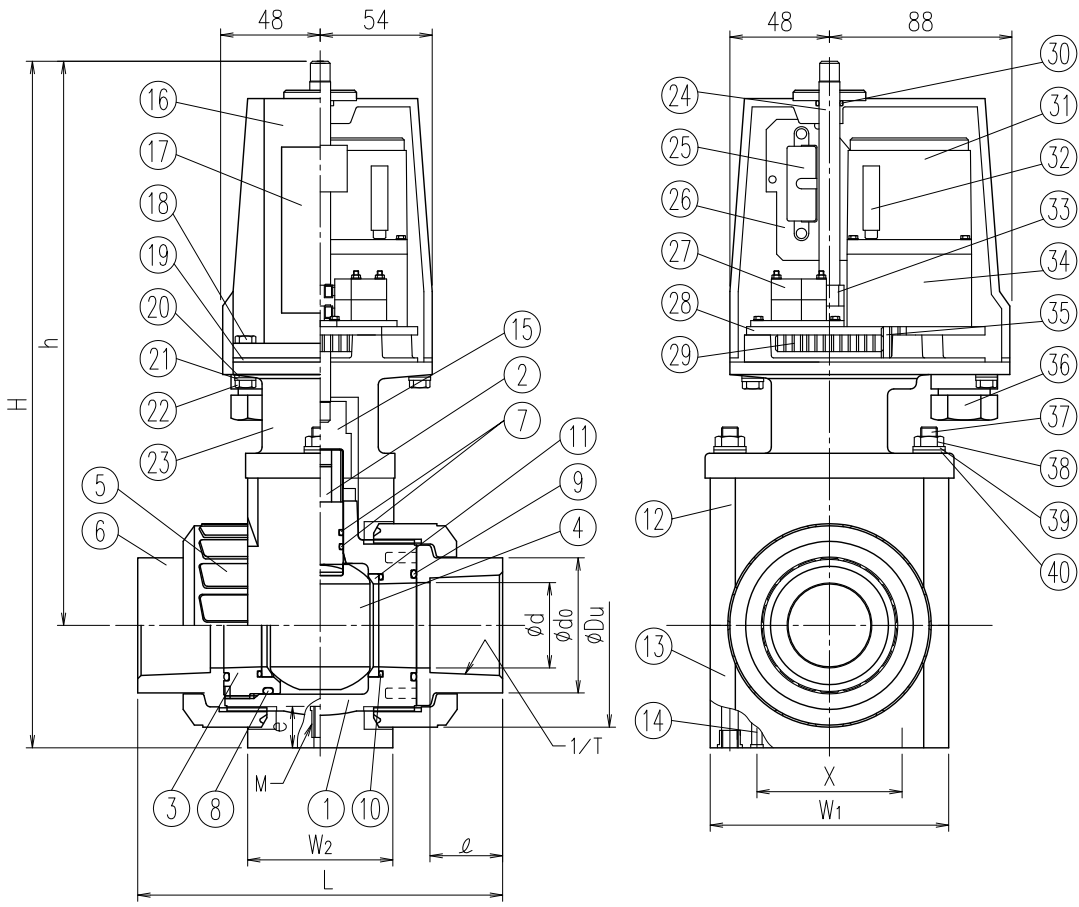
Unit: mm

Size	A (B)	φd	L		Flange												H	h	φDu	A	B1	B2	W1	W2	Actuator Type	Fixing Insert Nut		
					JIS10K				ANSI				DIN													X	Y	Mxe
			PVC,HT	PP,PVDF	φD	φC	n-φh	t	φD	φC	n-φh	t	φD	φC	n-φh	t												
□ 65 (2 1/2)	65	259±1.5	257±1.5	175	140	4-19	22	178	139.7	4-20	22.5	185	145	4-18	22	435	346	150	83	87	58	163	90	EB-6	115	38	M8x20	
□ 80 (3)	80	304±1.5	301±1.5	185	150	8-19	22	191	152.4	4-20	24.0	200	160	8-18	23	533	423	186	98	92	88	198	110	EB-25	140	48	M8x20	
□ 100 (4)	100	372±1.5	367±1.5	210	175	8-19	24	229	190.5	8-20	24.0	220	180	8-18	23	608	468	228	98	92	88	240	110	EB-25	180	59	M8x20	

Note) 1. Flange dimension is in accordance with the following standard; JIS B 2220 for JIS10K, ANSI B16.5 for ANSI and DIN EN 1092-1 PN10 for DIN
 2. If a fixing insert bolt is used, it should not be screwed in beyond dimension e.

Client name		Date	
Flange Standard <input type="checkbox"/> JIS10K <input type="checkbox"/> ANSI <input type="checkbox"/> DIN		Approved by:	
Voltage <input type="checkbox"/> AC100V <input type="checkbox"/> AC200V			
Oil Free <input type="checkbox"/> YES			
ESLON Electric Ball Valve KS-Type			
Flange Type 65-100A			
Drawing No. BVK651HFXE			
SEKISUI SEKISUI CHEMICAL CO.,LTD.			

No.	Part Name	Q'TY	Material/Type	No.	Part Name	Q'TY	Material/Type
39	Hexagon Nut	2	SUS304	1	Body	1	
40	Spring Washer	2	SUS304	2	Stem	1	□PVC
41	Washer	2	SUS304	3	Ball holder	1	□HT
				4	Ball	1	□CPVC
				5	Union nut	2	
				6	TS Socket	2	
				7	Stem O-ring※ 1)	15-20A 25-50A	
				8	Ball holder O-ring	1	□EPDM
				9	Union O-ring	2	□FKM
				10	Ball seat O-ring	2	
				11	Ball Seat	2	PTFE
				12	Upper mount	1	FRP
				13	Lower mount	1	FRP
				14	Fixing Insert Nut	2	C3601
				15	Drive Shaft	1	SUS303
				16	Cover	1	AC-4+Epoxy paint
				17	Name Plate	1	AL-P
				18	Hexagonal Bolt	4	SUS304
				19	Cover Gasket	1	NR
				20	Spring Washer	4	SUS304
				21	Washer	4	SUS304
				22	Hexagon Nut	4	SUS304
				23	Yoke	1	AC-7+Epoxy paint
				24	Manual Open-Close Handle	1	SUS303
				25	Capacitor	1	-
				26	Terminal Stand	1	Phenol resin
				27	Micro Switch	2	OMRON: V-105-1A4
				28	Motor Base	1	AC-7
				29	Gear	1	S45C
				30	O-Ring	1	SBR
				31	Reversible Motor	1	-
				32	Thermal Protector	1	-
				33	Cam	2	SS400
				34	Gear Head	1	-
				35	Gear	1	S45C
				36	Electric Conduit Gland	1	G1/2
				37	Stud Bolt	2	SUS304



※ 1) Stem O-Ring material will be FKM+PTFE in case of Oil Free.

Dimension Table

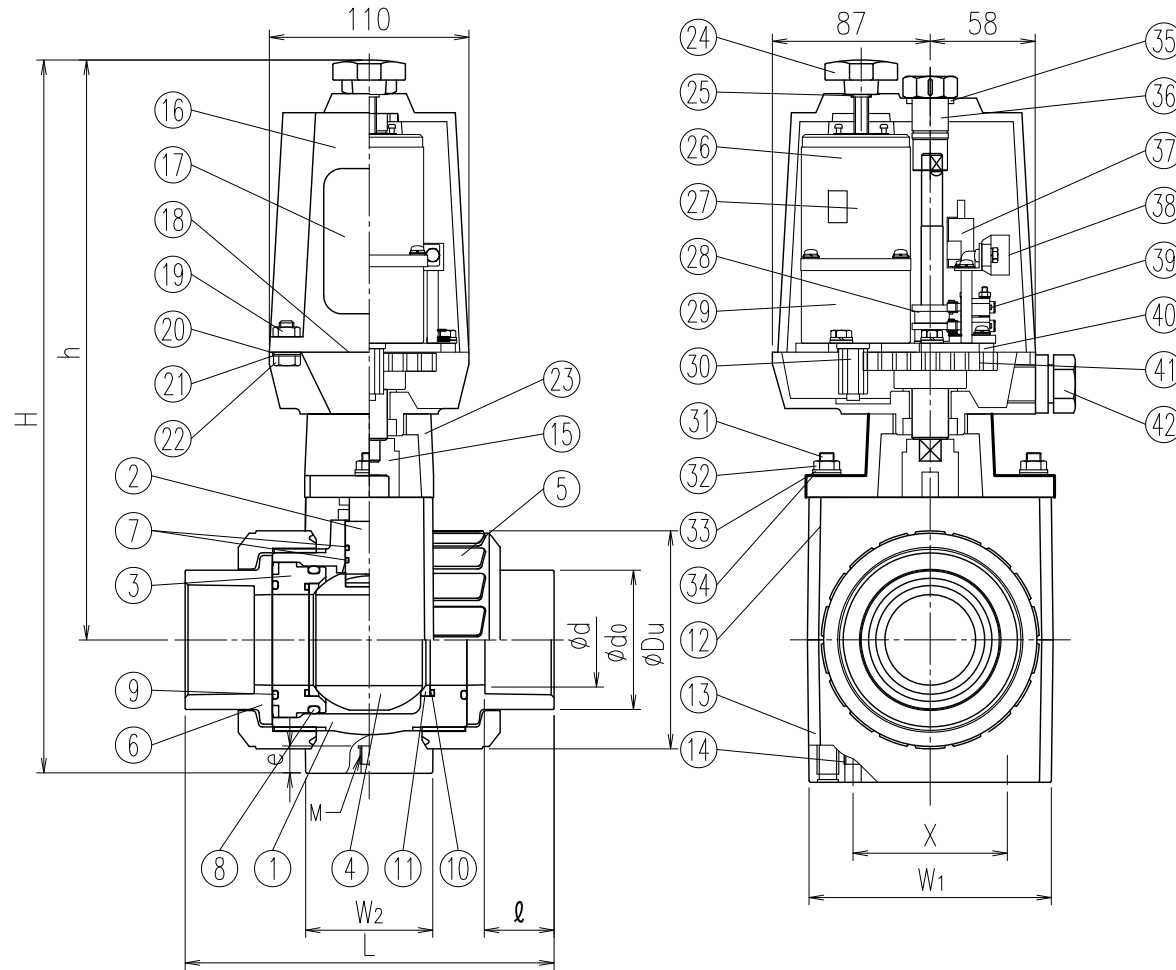
Unit: mm

SIZE	A (B)	ød	L			SOCKET									Actuator Type	Fixing Insert Nut						
						JIS			ASTM			DIN										
			JIS	ASTM	DIN	ød1	1/T	ℓ	ød1	1/T	ℓ	ød1	1/T	ℓ		ød0	H	h	øDu	W1	W2	X
□ 15 (1/2)	15	109±3.0	103±3.0	92±3.0	22.3	1/37	22	21.54	1/72	22	20.3	1/65	16	33	278	249	49	92	50	EB-4	50	M6x15
□ 20 (3/4)	20	132±3.0	119±3.0	107±3.0	26.3	1/42	25	26.87	1/85	25	25.3	1/80	19	35	286	252	59	92	50	EB-4	50	M6x15
□ 25 (1)	25	143±3.0	133±3.0	121±3.0	32.3	1/43	29	33.65	1/75	29	32.3	1/95	22	44	305	266	67	92	50	EB-4	50	M6x15
□ 32 (1·1/4)	32	166±3.0	147±3.0	137±3.0	38.4	1/37	32	42.42	1/84	32	40.3	1/115	26	54	320	272	81	98	60	EB-4	55	M6x15
□ 40 (1·1/2)	40	175±3.0	171±3.0	161±3.0	48.5	1/38	35	48.56	1/78	35	50.3	1/140	31	66	350	291	98	117	70	EB-4	70	M8x20

Note) 1. Socket dimension is in accordance with the following standard;JIS:JIS K6743,ASTM:ASTM D2467 and DIN2501 PN10/PN16 (ISO7005 PN10) for DIN
2. If a fixing insert bolt is used, it should not be screwed in beyond dimension e.

Client name		Date
Flange Standard	<input type="checkbox"/> JIS <input type="checkbox"/> ASTM <input type="checkbox"/> DIN	Approved by:
Voltage	<input type="checkbox"/> AC100V <input type="checkbox"/> AC200V	
Oil Free	<input type="checkbox"/> YES	
ESLON Electric Ball Valve KS-Type		
TS Socket Type/ 15-40A		
Drawing No. BVK1540SXE		
SEKISUI SEKISUI CHEMICAL CO.,LTD.		

No.	Part Name	Q'TY	Material/Type	No.	Part Name	Q'TY	Material/Type
38	Terminal Stand	1	Phenol resin	1	Body	1	
39	Micro Switch	2	OMRON: V-105-1A4	2	Stem	1	□PVC
40	Motor Base	1	AC-7	3	Ball holder	1	□HT
41	Gear	1	S45C	4	Ball	1	□CPVC
42	Electric Conduit Gland	1	G1/2	5	Union nut	2	



6	TS Socket	2	
7	Stem O-ring※ 1)	15-20A 25-50A	1 2
8	Ball holder O-ring		□EPDM
9	Union O-ring		□FKM
10	Ball seat O-ring		
11	Ball Seat	2	PTFE
12	Upper mount	1	FRP
13	Lower mount	1	FRP
14	Fixing Insert Nut	2	C3601
15	Drive Shaft	1	SUS303
16	Cover	1	AC-4+Epoxy paint
17	Name Plate	1	AL-P
18	Cover Gasket	1	NR
19	Hexagonal Bolt	4	SUS304
20	Spring Washer	4	SUS304
21	Washer	4	SUS304
22	Hexagon Nut	4	SUS304
23	Yoke	1	AC-7+Epoxy paint
24	Manual Open-Close Screw	1	Epoxy paint
25	O-Ring	1	SBR
26	Reversible Motor	1	-
27	Thermal Protector	1	-
28	Cam	2	AC-7
29	Gear Head	1	-
30	Gear	1	S45C
31	Stud Bolt	2	SUS304
32	Hexagon Nut	2	SUS304
33	Spring Washer	2	SUS304
34	Washer	2	SUS304
35	O-Ring	1	SBR
36	Manual Open-Close shaft	1	SUS303
37	Capacitor	1	-

※ 1) Stem O-Ring material will be FKM+PTFE in case of Oil Free.

Dimension Table

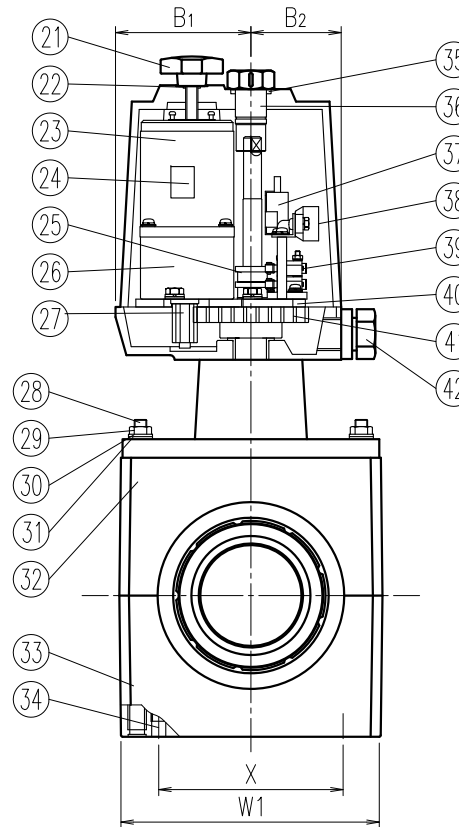
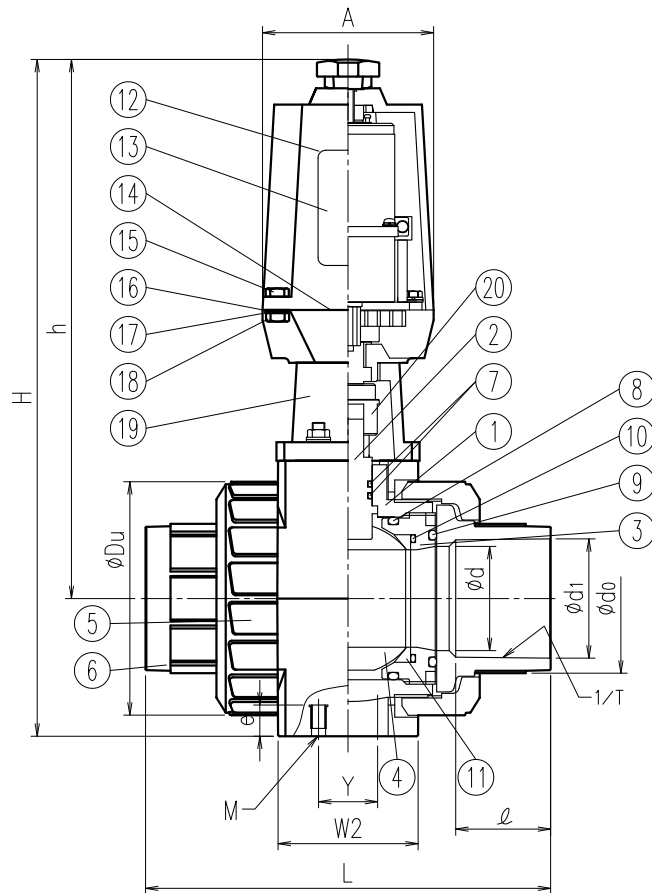
SIZE	A(B)	φd	SOCKET												Actuator Type	Fixing Insert Nut							
			L													φdo	H	h	φDu	W1	W2	X	Mxe
			JIS			ASTM			DIN														
□	50(2)	50	203±3.0	188±3.0	189±3.0	60.7	1/34	38	60.63	1/83	38	63.3	1/175	38	77	402	323	120	135	70	EB-6	85	M8x20

Unit: mm

Note) 1. Socket dimension is in accordance with the following standard;JIS:JIS K6743,ASTM:ASTM D2467 and DIN2501 PN10/PN16 (ISO7005 PN10) for DIN
2. If a fixing insert bolt is used, it should not be screwed in beyond dimension e.

Client name		Date
Flange Standard	□JIS □ASTM □DIN	Approved by:
Voltage	□AC100V □AC200V	
Oil Free	□YES	
ESLON Electric Ball Valve KS-Type TS Socket Type 50A		
Drawing No. BVK50SXE		
SEKISUI SEKISUI CHEMICAL CO.,LTD.		

No.	Part Name	Q'TY	Material/Type	No.	Part Name	Q'TY	Material/Type
39	Terminal Stand	1	Phenol resin	1	Body	1	
40	Micro Switch	2	OMRON: V-105-1A4 (65A)	2	Stem	1	□PVC
			OMRON: V-156-1A5 (80,100A)	3	Ball holder	2	□HT
41	Motor Base	1	AC-7	4	Ball	1	□CPVC
42	Gear	1	S45C	5	Union nut	2	
43	Electric Conduit Gland	1	G1/2	6	TS Socket	2	
				7	Stem O-ring※1)	2	



8	Ball holder O-ring	2	□EPDM
9	Union O-ring	2	□FKM
10	Ball seat O-ring	2	
11	Ball Seat	2	PTFE
12	Cover	1	AC-4+Epoxy paint
13	Name Plate	1	AL-P
14	Cover Gasket	1	NR
15	Hexagonal Bolt	4	SUS304
16	Spring Washer	4	SUS304
17	Washer	4	SUS304
18	Hexagon Nut	4	SUS304
19	Yoke	1	AC-7+Epoxy paint
20	Drive Shaft	1	SUS303
21	Manual Open-Close Screw	1	Epoxy paint
22	O-Ring	1	SBR
23	Reversible Motor	1	-
24	Thermal Protector	1	-
25	Cam	2	AC-7
26	Gear Head	1	-
27	Gear	1	S45C
28	Stud Bolt	-	SUS304
29	Hexagon Nut	-	SUS304
30	Spring Washer	-	SUS304
31	Washer	-	SUS304
32	Upper mount	1	FRP
33	Lower mount	1	FRP
34	Fixing Insert Nut	-	C3601
35	O-Ring	1	SBR
36	Manual Open-Close shaft	1	SUS303
37	Capacitor	1	-

※1) Stem O-Ring material will be FKM+PTFE in case of Oil Free.

Dimension Table

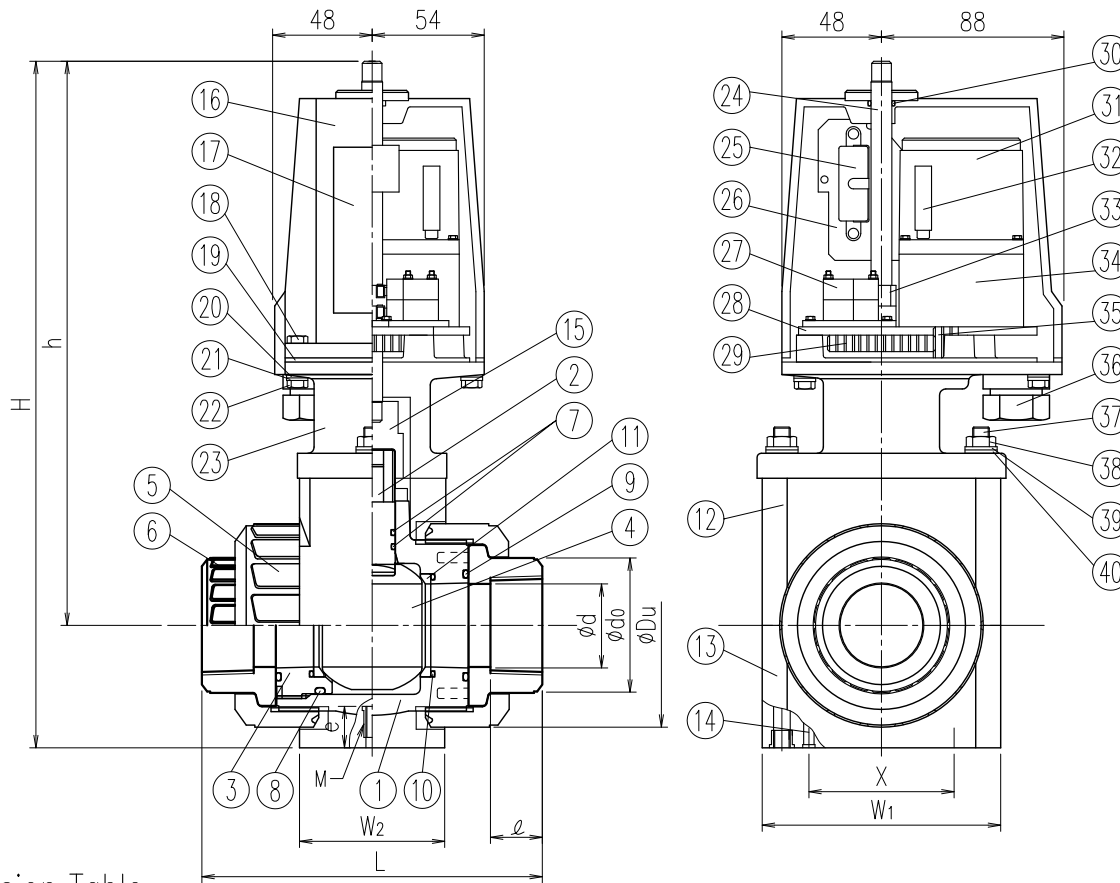
Unit: mm

Size	A (B)	φd	L												TS Socket			φdo	H	h	φDu	A	B1	B2	W1	W2	Actuator Type	Fixing Insert Nut		
			JIS			ASTM			DIN			X	Y	Mxe																
			JIS	ASTM	DIN	φd1	1/T	ℓ	φd1	1/T	ℓ				φd1	1/T	ℓ													
□ 65 (2 1/2)	65	259±3.0	211±3.0	211±3.0	76.6	1/48	61	73.38	1/84	44.45	75.3	1/220	44	96	435	346	150	110	87	58	163	90	EB-6	115	38	M6x10				
□ 80 (3)	80	311±3.0	262±3.0	263±3.0	89.6	1/49	64	89.31	1/78	47.63	90.3	1/255	51	113	533	423	186	130	92	88	198	110	EB-25	140	48	M8x10				
□ 100 (4)	100	390±3.0	315±3.0	315±3.0	114.7	1/56	84	114.76	1/87	57.15	110.4	1/203	61	144	608	468	233	130	92	88	240	110	EB-25	180	59	M8x10				

Note) 1. Socket dimension is in accordance with the following standard; JIS: JIS K6743, ASTM: ASTM D2467 and DIN2501 PN10/PN16 (ISO7005 PN10) for DIN
2. If a fixing insert bolt is used, it should not be screwed in beyond dimension e.

Client name		Date	
Flange Standard	□JIS □ASTM □DIN	Approved by:	
Voltage	□AC100V □AC200V		
Oil Free	□YES		
ESLON Electric Ball Valve KS-Type TS Socket Type 65-100A			
Drawing No. BVK651HSXE			
SEKISUI SEKISUI CHEMICAL CO., LTD.			

No.	Part Name	Q'TY	Material/Type	No.	Part Name	Q'TY	Material/Type
39	Hexagon Nut	2	SUS304	1	Body	1	
40	Spring Washer	2	SUS304	2	Stem	1	
41	Washer	2	SUS304	3	Ball holder	1	□PVC



4	Ball	1	□PVDF
5	Union nut	2	
6	Thread Socket	2	
7	Stem O-ring* 1)	15-20A 25-50A	1 2
8	Ball holder O-ring	1	□EPDM
9	Union O-ring	2	□FKM
10	Ball seat O-ring	2	
11	Ball Seat	2	PTFE
12	Upper mount	1	FRP
13	Lower mount	1	FRP
14	Fixing Insert Nut	2	C3601
15	Drive Shaft	1	SUS303
16	Cover	1	AC-4+Epoxy paint
17	Name Plate	1	AL-P
18	Hexagonal Bolt	4	SUS304
19	Cover Gasket	1	NR
20	Spring Washer	4	SUS304
21	Washer	4	SUS304
22	Hexagon Nut	4	SUS304
23	Yoke	1	AC-7+Epoxy paint
24	Manual Open-Close Handle	1	SUS303
25	Capacitor	1	-
26	Terminal Stand	1	Phenol resin
27	Micro Switch	2	OMRON: V-105-1A4
28	Motor Base	1	AC-7
29	Gear	1	S45C
30	O-Ring	1	SBR
31	Reversible Motor	1	-
32	Thermal Protector	1	-
33	Cam	2	SS400
34	Gear Head	1	-
35	Gear	1	S45C
36	Electric Conduit Gland	1	G1/2
37	Stud Bolt	2	SUS304

Dimension Table

Unit: mm

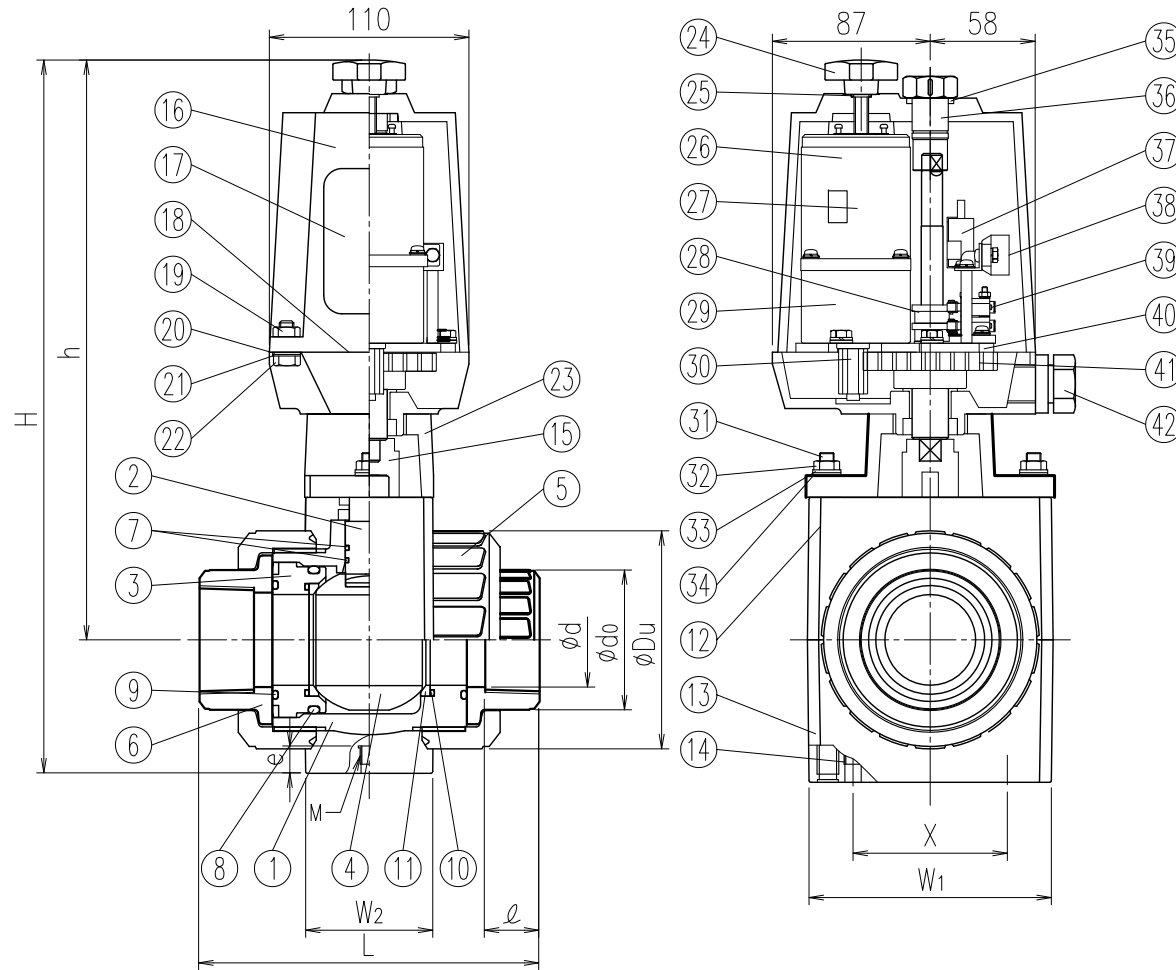
Size	A (B)	ød	L		Thread			ℓ		ødo	H	h	øDu	W1	W2	Actuator Type	Fixing Insert Nut	
			PVC	PVDF	JIS (Rc)、DIN (Rc)	ANSI (NPT)	DIN (Rp)	PVC	PVDF								X	Mxe
□ 15 (1/2)	15	15	97±3.0	99±3.0	1/2	1/2	1/2	18	20	30	278	249	49	92	50	EB-4	50	M6x15
□ 20 (3/4)	20	20	117±3.0	116±3.0	3/4	3/4	3/4	18	22	35	286	252	59	92	50	EB-4	50	M6x15
□ 25 (1)	25	25	128±3.0	136±3.0	1	1	1	23	24	44	305	266	67	92	50	EB-4	50	M6x15
□ 32 (1.1/4)	32	32	146±3.0	148±3.0	1.1/4	1.1/4	1.1/4	23	25	54	320	272	81	98	60	EB-4	55	M6x15
□ 40 (1.1/2)	40	40	163±3.0	169±3.0	1.1/2	1.1/2	1.1/2	25	28	65	350	291	98	117	70	EB-4	70	M8x20

Note) 1. Thread dimension is in accordance with the following standard;
 JIS:JIS B 0203,ANSI:ANSI B1.20.1 and DIN2501 PN10/PN16 (ISO7005 PN10) for DIN
 2. If a fixing insert bolt is used, it should not be screwed in beyond dimension e.

*1) Stem O-Ring material will be FKM+PTFE in case of Oil Free.

Client name		Date
Flange Standard	<input type="checkbox"/> Rc <input type="checkbox"/> NPT <input type="checkbox"/> Rp	Approved by:
Voltage	<input type="checkbox"/> AC100V <input type="checkbox"/> AC200V	
Oil Free	<input type="checkbox"/> YES	
ESLON Electric Ball Valve KS-Type Thread Socket Type/15-40A		
Drawing No. BVK1540NXE		
SEKISUI SEKISUI CHEMICAL CO.,LTD.		

No.	Part Name	Q'TY	Material/Type	No.	Part Name	Q'TY	Material/Type
38	Terminal Stand	1	Phenol resin	1	Body	1	
39	Micro Switch	2	OMRON: V-105-1A4	2	Stem	1	
40	Motor Base	1	AC-7	3	Ball holder	1	□PVC
41	Gear	1	S45C	4	Ball	1	□PVDF
42	Electric Conduit Gland	1	G1/2	5	Union nut	2	



No.	Part Name	Q'TY	Material/Type
6	Thread Socket	2	
7	Stem O-ring※ 1)	15-20A 25-50A	1 2
8	Ball holder O-ring	1	□EPDM
9	Union O-ring	2	□FKM
10	Ball seat O-ring	2	
11	Ball Seat	2	PTFE
12	Upper mount	1	FRP
13	Lower mount	1	FRP
14	Fixing Insert Nut	2	C3601
15	Drive Shaft	1	SUS303
16	Cover	1	AC-4+Epoxy paint
17	Name Plate	1	AL-P
18	Cover Gasket	1	NR
19	Hexagonal Bolt	4	SUS304
20	Spring Washer	4	SUS304
21	Washer	4	SUS304
22	Hexagon Nut	4	SUS304
23	Yoke	1	AC-7+Epoxy paint
24	Manual Open-Close Screw	1	Epoxy paint
25	O-Ring	1	SBR
26	Reversible Motor	1	-
27	Thermal Protector	1	-
28	Cam	2	AC-7
29	Gear Head	1	-
30	Gear	1	S45C
31	Stud Bolt	2	SUS304
32	Hexagon Nut	2	SUS304
33	Spring Washer	2	SUS304
34	Washer	2	SUS304
35	O-Ring	1	SBR
36	Manual Open-Close shaft	1	SUS303
37	Capacitor	1	-

※ 1) Stem O-Ring material will be FKM+PTFE in case of Oil Free.

Dimension Table

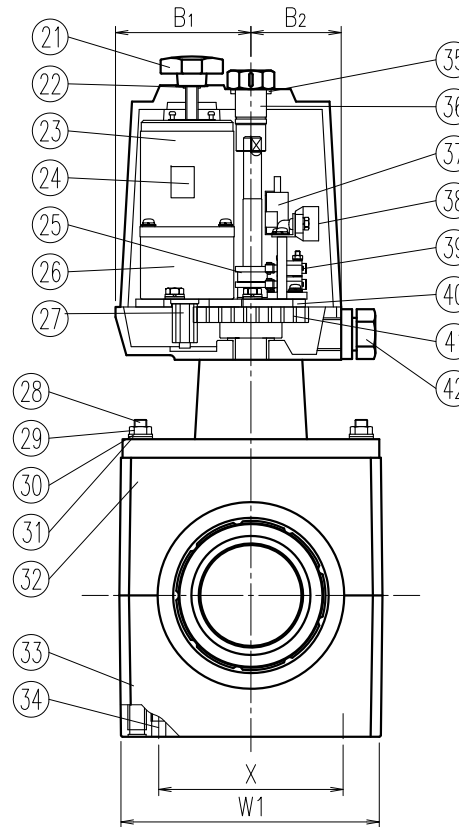
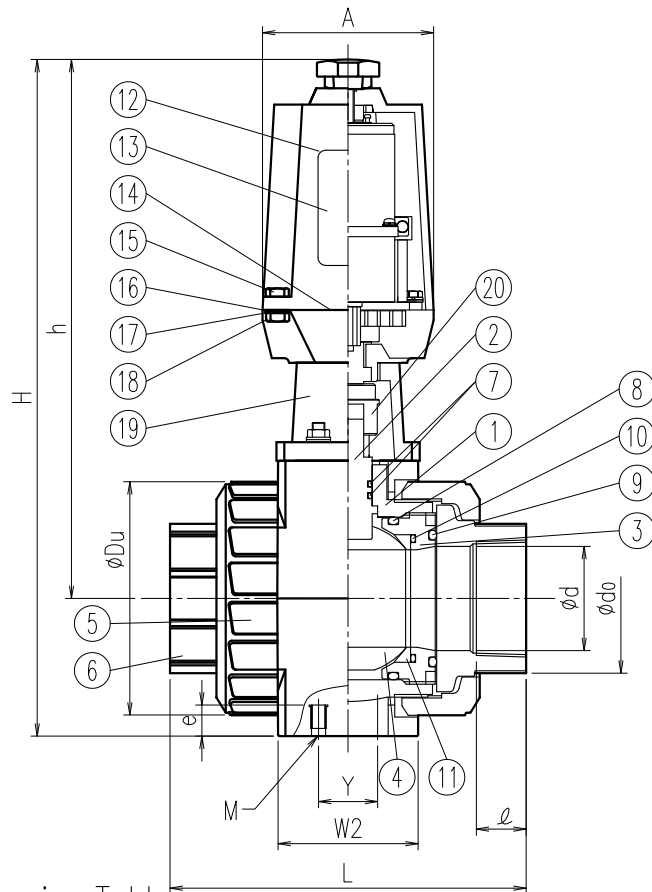
Unit: mm

SIZE	A (B)	φd	L		Thread				φdo	H	h	φDu	W1	W2	Actuator Type	Fixing Insert Nut			
					JIS (Rc)、DIN (Rc)		ANSI (NPT)									DIN (Rp)		X	Mxe
			PVC	PVDF	Rc	ℓ	NPT	ℓ								Rp	ℓ		
□	50 (2)	50	188±3.0	196±3.0	2	30	2	30	2	30	77	402	323	120	135	70	EB-6	85	M8x20

Note) 1. Thread dimension is in accordance with the following standard; JIS: JIS B 0203, ANSI: ANSI B1.20.1 and DIN2501 PN10/ PN16 (ISO7005 PN10) for DIN
2. If a fixing insert bolt is used, it should not be screwed in beyond dimension e.

Client name		Date
Flange Standard	□Rc □NPT □Rp	Approved by:
Voltage	□AC100V □AC200V	
Oil Free	□YES	
ESLON Electric Ball Valve KS-Type		
Thread Socket Type 50A		
Drawing No. BVK50NXE		
SEKISUI SEKISUI CHEMICAL CO., LTD.		

No.	Part Name	Q'TY	Material/Type	No.	Part Name	Q'TY	Material/Type
39	Terminal Stand	1	Phenol resin	1	Body	1	
40	Micro Switch	2	OMRON: V-105-1A4 (65A)	2	Stem	1	
			OMRON: V-156-1A5 (80,100A)	3	Ball holder	2	□PVC
41	Motor Base	1	AC-7	4	Ball	1	□PVDF
42	Gear	1	S45C	5	Union nut	2	
43	Electric Conduit Gland	1	G1/2	6	Thread Socket	2	
				7	Stem O-ring※1)	2	



8	Ball holder O-ring	2	□EPDM
9	Union O-ring	2	□FKM
10	Ball seat O-ring	2	
11	Ball Seat	2	PTFE
12	Cover	1	AC-4+Epoxy paint
13	Name Plate	1	AL-P
14	Cover Gasket	1	NR
15	Hexagonal Bolt	4	SUS304
16	Spring Washer	4	SUS304
17	Washer	4	SUS304
18	Hexagon Nut	4	SUS304
19	Yoke	1	AC-7+Epoxy paint
20	Drive Shaft	1	SUS303
21	Manual Open-Close Screw	1	Epoxy paint
22	O-Ring	1	SBR
23	Reversible Motor	1	-
24	Thermal Protector	1	-
25	Cam	2	AC-7
26	Gear Head	1	-
27	Gear	1	S45C
28	Stud Bolt	-	SUS304
29	Hexagon Nut	-	SUS304
30	Spring Washer	-	SUS304
31	Washer	-	SUS304
32	Upper mount	1	FRP
33	Lower mount	1	FRP
34	Fixing Insert Nut	-	C3601
35	O-Ring	1	SBR
36	Manual Open-Close shaft	1	SUS303
37	Capacitor	1	-

※1) Stem O-Ring material will be FKM+PTFE in case of Oil Free.

Dimension Table

Unit: mm

Size	A (B)	φd	Thread Socket						φ	φdo	H	h	φDu	A	B1	B2	W1	W2	Actuator Type	Fixing Insert Nut		
			JIS (Rc) 、 DIN (Rc)		ANSI (NPT)		DIN (Rp)													X	Y	Mxe
			Rc	L	NPT	L	Rp	L														
□ 65 (2 1/2)	65	2 1/2	227±3.0	2 1/2	212±3.0	2 1/2	212±3.0	32	96	435	346	150	110	87	58	163	90	EB-6	115	38	M6x10	
□ 80 (3)	80	3	278±3.0	3	261±3.0	3	261±3.0	37	113	533	423	186	130	92	88	198	110	EB-25	140	48	M8x10	
□ 100 (4)	100	4	330±3.0	4	315±3.0	4	315±3.0	45	144	608	468	233	130	92	88	240	110	EB-25	180	59	M8x10	

Note) 1. Thread dimension is in accordance with the following standard;
 JIS:JIS B 0203,ANSI:ANSI B1.20.1 and DIN2501 PN10/PN16 (ISO7005 PN10) for DIN
 2. If a fixing insert bolt is used, it should not be screwed in beyond dimension e.

Client name		Date
Flange Standard	□Rc □NPT □Rp	Approved by:
Voltage	□AC100V □AC200V	
Oil Free	□YES	
ESLON Electric Ball Valve KS-Type Thread Socket Type 65-100A		
Drawing No. BVK651HNXE		
SEKISUI SEKISUI CHEMICAL CO.,LTD.		