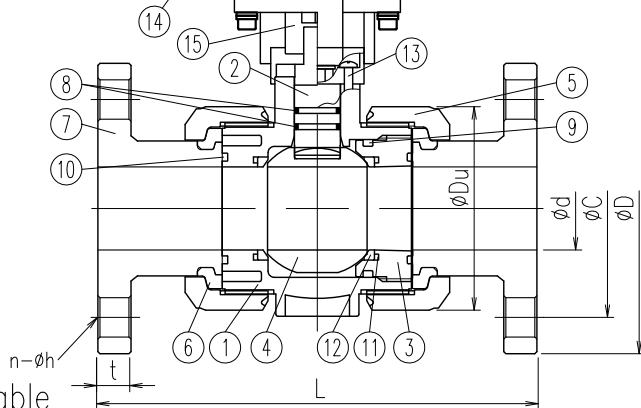
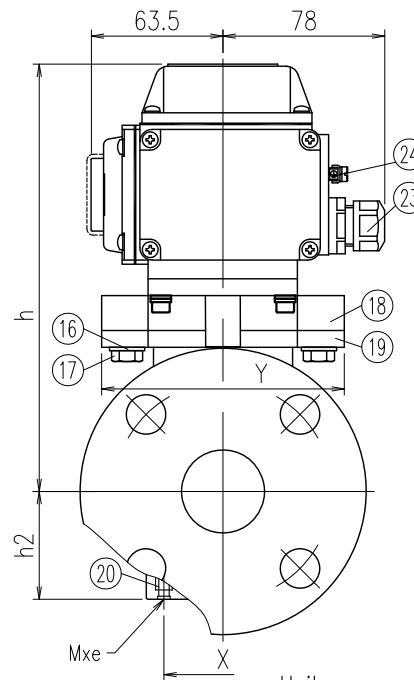
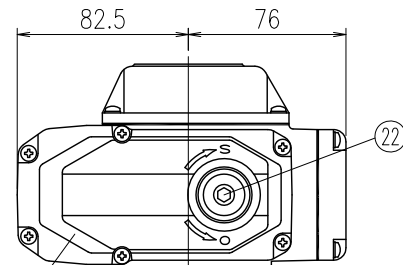
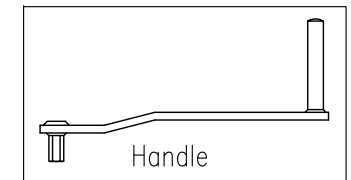


Actuator Specification	EB-Z	EB-05
Rated Torque	9.8N·m	39N·m
Speed	4sec/50Hz 3.3sec/60Hz	15sec/50Hz 12.5sec/60Hz
Motor	8W (Reversible Motor)	
Protection form	Thermal Protector	
Manual operation	Crank handle attached	
Enclosure	Equivalent to P-66	



No.	Part Name	Q'TY	Material
1	Body	1	
2	Stem	1	□PVC
3	Ball holder	1	□HT (JIS: Brown)
4	Ball	1	□CPVC (ANSI-DIN: Gray)
5	Union nut	2	□PP
6	Set ring	2	□PVDF
7	Flange	2	
8	Stem O-ring*1	2	
9	Ball holder O-ring	1	□EPDM
10	Union O-ring	2	□FKM
11	Ball seat O-ring	2	
12	Ball Seat	2	PTFE
13	Screw	4	SUS304
14	Actuator	1	ADC12 (Epoxy Resin Coated)
15	Connector	1	PVC, HT: ZDC3 PP, PVDF: AL
16	Washer	2	SUS304
17	Hexagon Bolt	2	SUS304
18	Upper mount	1	AC4A
19	Lower mount	1	GF-PP
20	Fixing Insert Nut	2	C3601
21	Valve Position Indicator	1	Tempered glass
22	Manual Over Ride Socket	1	S45C
23	Electric wire connector	1	PA, G1/2
24	Earth Terminal *2	1	SS400/Nickel Coated

※1) Stem O-Ring material will be FKM+PTFE in case of Oil Free.  
 ※2) AC200/220V



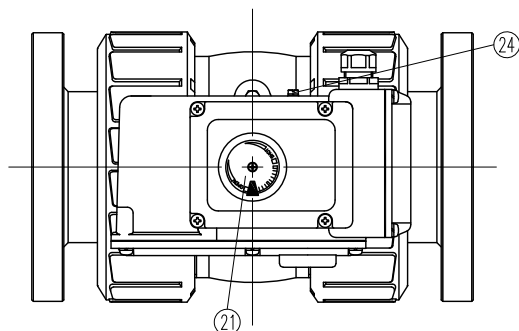
Dimension Table

Size	A (B)	ød	L	Flange												h	h2	øDu	Y	Actuator Type	Fixing Insert Nut	
				JIS10K			ANSI			DIN											X	Mxe
				øD	øC	n-øh	t	øD	øC	n-øh	t	øD	øC	n-øh	t							
□ 15 (1/2)	15	143±1.5	95	70	4-15	14	89.0	60.5	4-16	11.5	95	65	4-14	11	163	28	49	68	EB-Z	27	M5x8	
□ 20 (3/4)	20	172±1.5	100	75	4-15	14	98.0	70.0	4-16	13.0	105	75	4-14	12	168	32	59	68	EB-Z	32	M5x8	
□ 25 (1)	25	187±1.5	125	90	4-19	14	108.0	79.5	4-16	14.5	115	85	4-14	14	179	37	67	86	EB-Z	37	M5x8	
□ 32 (1·1/4)	32	190±1.5	135	100	4-19	16	117.5	89.0	4-16	16.0	140	100	4-18	15	186	43	81	86	EB-05	42	M5x8	
□ 40 (1·1/2)	40	212±1.5	140	105	4-19	16	127.0	98.5	4-16	17.5	150	110	4-18	16	206	52	98	117	EB-05	57	M6x11	
□ 50 (2)	50	234±1.5	155	120	4-19	20	152.0	120.5	4-19	19.5	165	125	4-18	18	212	63	120	117	EB-05	67	M6x11	

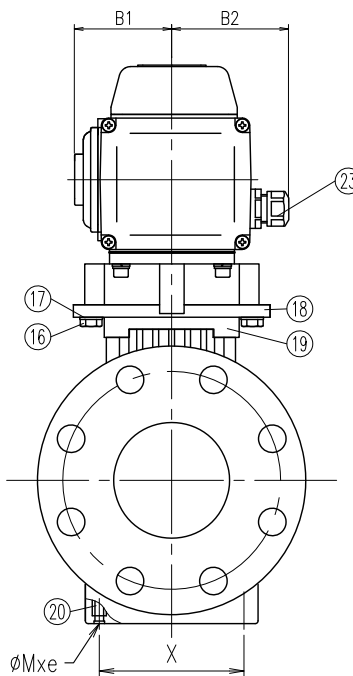
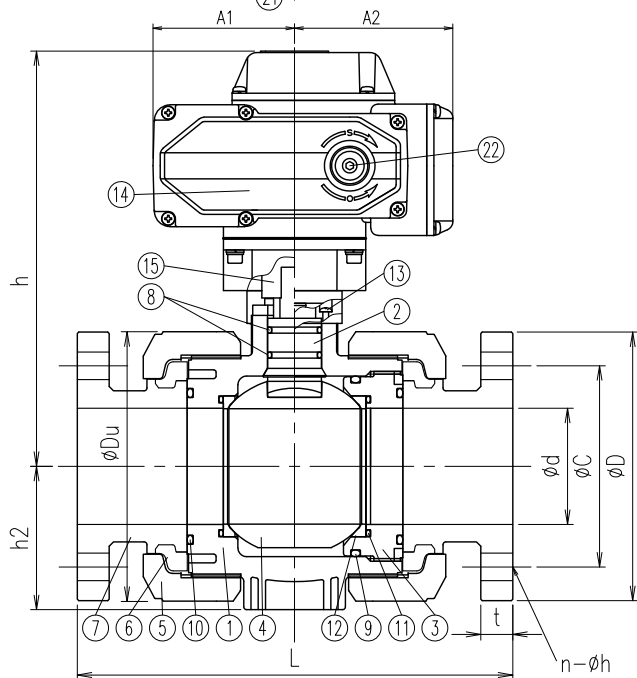
- Flange dimension is in accordance with the following standard;  
 JIS B 2220 for JIS10K, ANSI B16.5 for ANSI and DIN2501 PN10/PN16 (ISO7005 PN10) for DIN
- If a fixing insert bolt is used, it should not be screwed in beyond dimension e.

Client name		Date
Flange Standard	□JIS10K □ANSI □DIN	Approved by:
Voltage	□AC100/110V (50/60Hz) □AC200/220V (50/60Hz)	
Oil Free	□YES	
ESLON Electric Ball Valve: K-Type Flange Type/15A~50A		
Drawing No.   BVMT1550FXE		

**SEKISUI SEKISUI CHEMICAL CO.,LTD.**

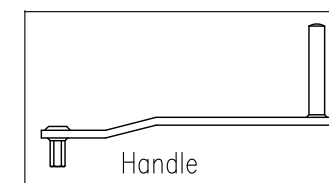


Actuator Specification	EB-05	EB-10
Rated Torque	39N·m	98N·m
Speed	15sec/50Hz	30sec/50Hz
	12.5sec/60Hz	25sec/60Hz
Motor	8W	20W
	(Reversible Motor)	
Protection form	Thermal Protector	
Manual operation	Crank handle attached	
Enclosure	Equivalent to P-66	



No.	Part Name	Q'TY	Material
1	Body	1	
2	Stem	1	□PVC
3	Ball holder	1	□HT (JIS: Brown)
4	Ball	1	□CPVC (ANSI-DIN: Gray)
5	Union nut	2	□PP
6	Set ring	2	□PVDF
7	Flange	2	
8	Stem O-ring*2	2	
9	Ball holder O-ring	1	□EPDM
10	Union O-ring	2	□FKM
11	Ball seat O-ring	2	
12	Ball Seat	2	PTFE
13	Screw	4	SUS304
14	Actuator	1	ADC12 (Epoxy Resin Coated)
15	Connector	1	PVC, HT: ZDC3 PP, PVDF: AL
16	Hexagon Bolt	2	SUS304
17	Washer	2	SUS304
18	Yoke	1	AC4A
19	Yoke	1	GF-PP
20	Fixing Insert Nut	2	C3601
21	Valve Position Indicator	1	Tempered glass
22	Manual Over Ride Socket	1	S45C
23	Electric wire connector	1	ZDC/FC, G1/2
24	Earth Terminal *1	1	SS400/Nickel Coated

\*1 AC200/220V  
\*2 Stem O-Ring material will be FKM+PTFE in case of Oil Free



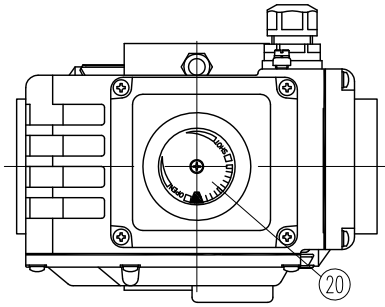
Dimension Table

A (B)	A1	A2	B1	B2	Actuator Type	Fixing Insert Nut	
						X	Mxe
65 (2 1/2)	82.5	76.0	63.5	78.0	EB-05	81.0	M6x10
80 (3)	97.5	109.0	67.0	80.5	EB-10	99.7	M8x10
100 (4)	97.5	109.0	67.0	80.5	EB-10	119.7	M8x10

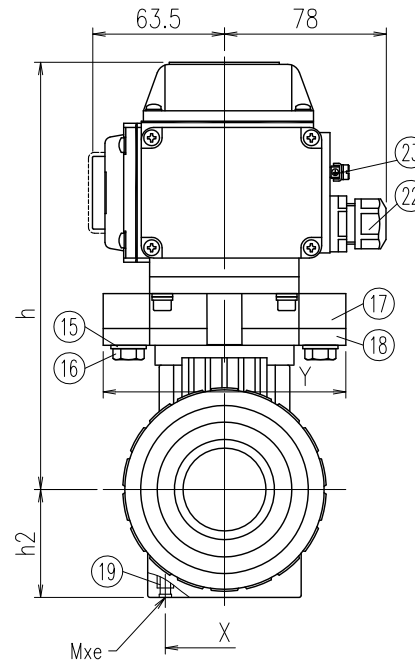
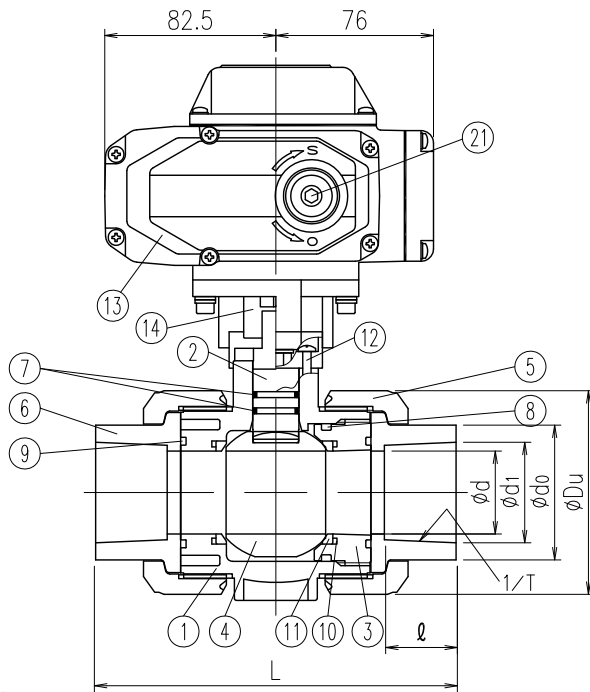
Size	A (B)	φd	L		Flange												h	h2	φDu
					JIS10K				ANSI				DIN						
			PVC,HT	PP,PVDF	φD	φC	n-φh	t	φD	φC	n-φh	t	φD	φC	n-φh	t			
□ 65 (2 1/2)	65	65	259±3.0	257±3.0	175	140	4-19	22	178	139.7	4-20	22.5	185	145	4-18	22	239	81	150
□ 80 (3)	80	80	304±3.0	301±3.0	185	150	8-19	22	191	152.4	4-20	24.0	200	160	8-18	23	285	99	186
□ 100 (4)	100	100	372±3.0	367±3.0	210	175	8-19	24	229	190.5	8-20	24.0	220	180	8-18	23	316	121	228

1. Flange dimension is in accordance with the following standard; JIS B 2220 for JIS10K, ANSI B16.5 for ANSI and DIN EN 1092-1 PN10 for DIN  
2. If a fixing insert bolt is used, it should not be screwed in beyond dimension e.

Client name		Date
Flange Standard	□JIS10K □ANSI □DIN	Approved by:
Voltage	□AC100/110V (50/60Hz) □AC200/220V (50/60Hz)	
Oil Free	□YES	
ESLON Electric Ball Valve: K-Type Flange Type/65A~100A		
Drawing No.   BVMT651HFxE		
<b>SEKISUI SEKISUI CHEMICAL CO.,LTD.</b>		

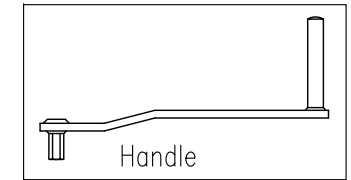


Actuator Specification	EB-Z	EB-05
Rated Torque	9.8N·m	39N·m
Speed	4sec/50Hz 3.3sec/60Hz	15sec/50Hz 12.5sec/60Hz
Motor	8W (Reversible Motor)	
Protection form	Thermal Protector	
Manual operation	Crank handle attached	
Enclosure	Equivalent to P-66	



No.	Part Name	QTY	Material/Type
1	Body	1	
2	Stem	1	
3	Ball holder	1	□PVC
4	Ball	1	□HT (JIS: Brown)
5	Union nut	2	□CPVC (ANSI·DIN: Gray)
6	TS socket	2	
7	Stem O-ring*1	2	
8	Ball holder O-ring	1	□EPDM
9	Union O-ring	2	□FKM
10	Ball seat O-ring	2	
11	Ball Seat	2	PTFE
12	Screw	4	SUS304
13	Actuator	1	ADC12 (Epoxy Resin Coated)
14	Connector	1	ZDC3
15	Washer	2	SUS304
16	Hexagon Bolt	2	SUS304
17	Upper mount	1	AC4A
18	Lower mount	1	GF-PP
19	Fixing Insert Nut	2	C3601
20	Valve Position Indicator	1	Tempered glass
21	Manual Over Ride Socket	1	S45C
22	Electric wire connector	1	PA, G1/2
23	Earth Terminal *2	1	SS400/Nickel Coated

※1) Stem O-Ring material will be FKM+PTFE in case of Oil Free.  
 ※2) AC200/220V



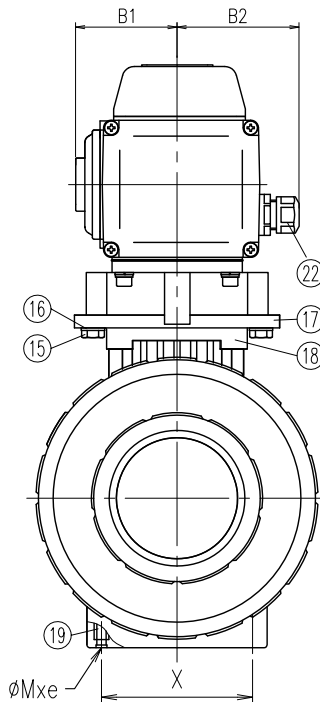
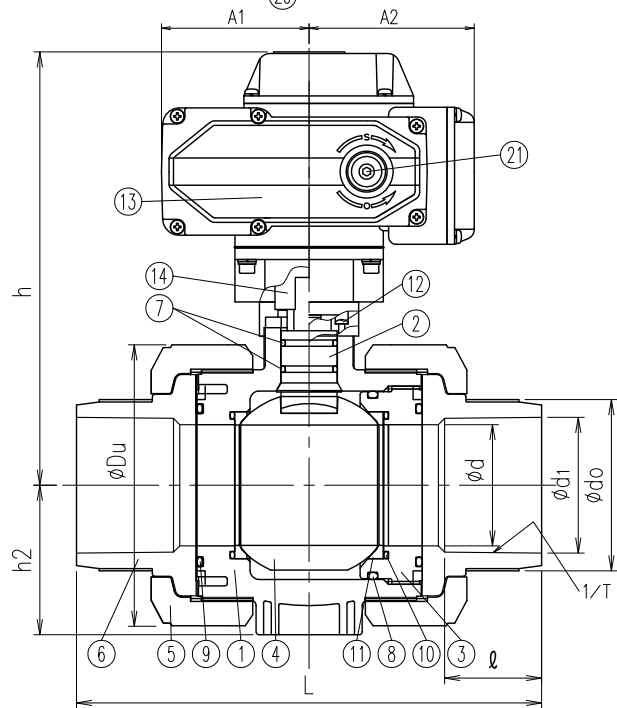
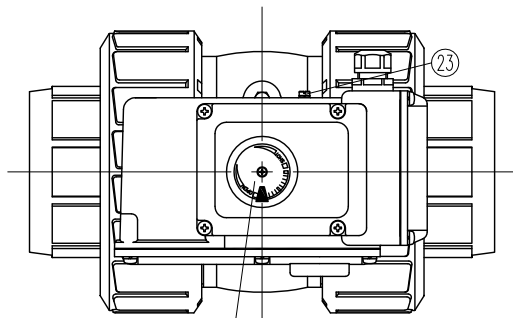
Dimension Table

Unit: mm

SIZE	A (B)	ød	L												ødo	h	h2	øDu	Y	Actuator Type	Fixing Insert Nut	
			Socket			ød1	1/T	ℓ	Socket			ød1	1/T	ℓ							X	Mxe
			JIS	ASTM	DIN				JIS	ASTM	DIN											
□ 15 (1/2)	15	109±3.0	103±3.0	92±3.0	22.3	1/37	22	21.54	1/72	22	20.3	1/65	16	33	163	28	49	68	EB-Z	27	M5x8	
□ 20 (3/4)	20	132±3.0	119±3.0	107±3.0	26.3	1/42	25	26.87	1/85	25	25.3	1/80	19	35	168	32	59	68	EB-Z	32	M5x8	
□ 25 (1)	25	143±3.0	133±3.0	121±3.0	32.3	1/43	29	33.65	1/75	29	32.3	1/95	22	44	179	37	67	86	EB-Z	37	M5x8	
□ 32 (1·1/4)	32	166±3.0	147±3.0	137±3.0	38.4	1/37	32	42.42	1/84	32	40.3	1/115	26	54	186	43	81	86	EB-05	42	M5x8	
□ 40 (1·1/2)	40	175±3.0	171±3.0	161±3.0	48.5	1/38	35	48.56	1/78	35	50.3	1/140	31	66	206	52	98	117	EB-05	57	M6x11	
□ 50 (2)	50	203±3.0	188±3.0	189±3.0	60.7	1/34	38	60.63	1/83	38	63.3	1/175	38	77	212	63	120	117	EB-05	67	M6x11	

1. Socket dimension is in accordance with the following standard;ASTM D2467 for ASTM and DIN2501 PN10/PN16 (ISO7005 PN10) for DIN  
 2. If a fixing insert bolt is used, it should not be screwed in beyond dimension e.

Client name		Date
Socket Standard	□JIS □ASTM □DIN	Approved by:
Voltage	□AC100/110V (50/60Hz) □AC200/220V (50/60Hz)	
Oil Free	□YES	
ESLON Electric Ball Valve: K-Type TS Socket/15A~50A		
Drawing No.   BVMT1550SXE		
<b>SEKISUI SEKISUI CHEMICAL CO.,LTD.</b>		



Actuator Specification	EB-05	EB-10
Rated Torque	39N·m	98N·m
Speed	15sec/50Hz 12.5sec/60Hz	30sec/50Hz 25sec/60Hz
Motor	8W	20W
	(Reversible Motor)	
Protection form	Thermal Protector	
Manual operation	Crank handle attached	
Enclosure	Equivalent to P-66	

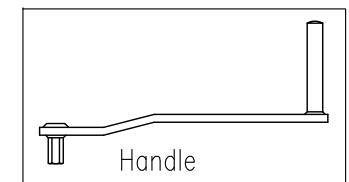
No.	Part Name	Q'TY	Material
1	Body	1	
2	Stem	1	□PVC
3	Ball holder	1	□HT (JIS: Brown)
4	Ball	1	□CPVC (ANSI-DIN: Gray)
5	Union nut	2	
6	TS socket	2	
7	Stem O-ring*2	2	
8	Ball holder O-ring	1	□EPDM
9	Union O-ring	2	□FKM
10	Ball seat O-ring	2	
11	Ball seat	2	PTFE
12	Screw	4	SUS304
13	Actuator	1	ADC12 (Epoxy Resin Coated)
14	Connector	1	ZDC3
15	Hexagon Bolt	2	SUS304
16	Washer	2	SUS304
17	Yoke	1	AC4A
18	Yoke	1	GF-PP
19	Fixing Insert Nut	2	C3601
20	Valve Position Indicator	1	Tempered glass
21	Manual Over Ride Socket	1	S45C
22	Electric wire connector	1	ZDC/FC, G1/2
23	Earth Terminal *1	1	SS400/Nickel Coated

\*1 AC200/220V

\*2 Stem O-Ring material will be FKM+PTFE in case of Oil Free

Unit: mm

A (B)	Actuator Type	Fixing Insert Nut	
		X	Mxe
65 (2 1/2)	EB-05	81.0	M6x10
80 (3)	EB-10	99.7	M8x10
100 (4)	EB-10	119.7	M8x10



Dimension Table

Size	A (B)	φd	L												h	h2	φDu	A1	A2	B1	B2
			TS Socket			JIS			ASTM			DIN									
			JIS	ASTM	DIN	φd1	1/T	ℓ	φd1	1/T	ℓ	φd1	1/T	ℓ							
□ 65 (2 1/2)	65	259±3.0	211±3.0	211±3.0	211±3.0	76.6	1/48	61	73.38	1/84	44.45	75.3	1/220	44	239	81	150	82.5	76	63.5	78.0
□ 80 (3)	80	311±3.0	262±3.0	263±3.0	263±3.0	89.6	1/49	64	89.31	1/78	47.63	90.3	1/255	51	285	99	186	97.5	109	67.0	80.5
□ 100 (4)	100	390±3.0	315±3.0	315±3.0	315±3.0	114.7	1/56	84	114.76	1/87	57.15	110.4	1/203	61	316	121	228	97.5	109	67.0	80.5

1. Socket dimension is in accordance with the following standard;ASTM D2467 for ASTM and DIN2501 PN10/PN16 (ISO7005 PN10) for DIN

2. If a fixing insert bolt is used, it should not be screwed in beyond dimension e.

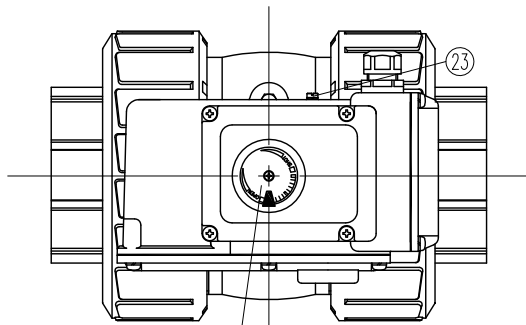
Client name	Date
Socket Standard □JIS □ASTM □DIN	Approved by:
Voltage □AC100/110V (50/60Hz) □AC200/220V (50/60Hz)	
Oil Free □YES	

ESLON Electric Ball Valve: K-Type  
TS socket/65A-100A

Drawing No. | BVT651HSXE

**SEKISUI SEKISUI CHEMICAL CO.,LTD.**



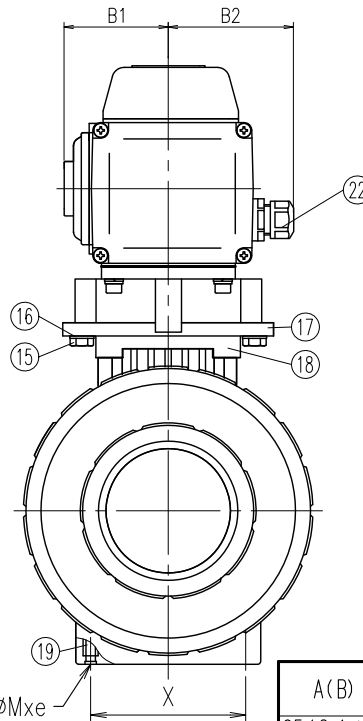
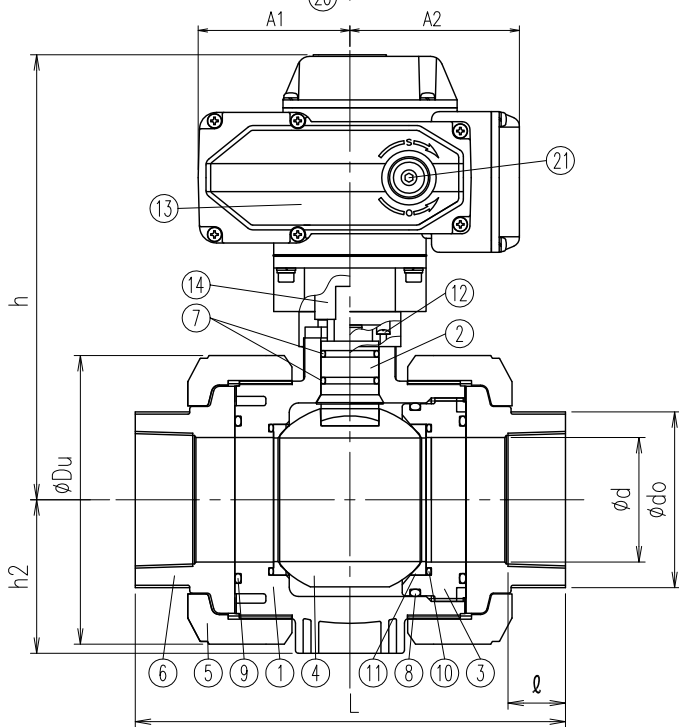


Actuator Specification	EB-05	EB-10
Rated Torque	39N·m	98N·m
Speed	15sec/50Hz	30sec/50Hz
	12.5sec/60Hz	25sec/60Hz
Motor	8W	20W
	(Reversible Motor)	
Protection form	Thermal Protector	
Manual operation	Crank handle attached	
Enclosure	Equivalent to P-66	

No.	Part Name	Q'TY	Material
1	Body	1	
2	Stem	1	
3	Ball holder	1	□PVC
4	Ball	1	□PVDF
5	Union nut	2	
6	Threaded socket	2	
7	Stem O-ring*2	2	
8	Ball holder O-ring	1	□EPDM
9	Union O-ring	2	□FKM
10	Ball seat O-ring	2	
11	Ball seat	2	PTFE
12	Screw	4	SUS304
13	Actuator	1	ADC12 (Epoxy Resin Coated)
14	Connector	1	PVC: ZDC3, PVDF: AL
15	Hexagon Bolt	2	SUS304
16	Washer	2	SUS304
17	Yoke	1	AC4A
18	Yoke	1	GF-PP
19	Fixing Insert Nut	2	C3601
20	Valve Position Indicator	1	Tempered glass
21	Manual Over Ride Socket	1	S45C
22	Electric wire connector	1	ZDC/FC, G1/2
23	Earth Terminal *1	1	SS400/Nickel Coated

\*1 AC200/220V

\*2 Stem O-Ring material will be FKM+PTFE in case of Oil Free



Unit: mm

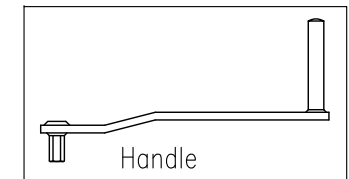
A (B)	Actuator Type	Fixing Insert Nut	
		X	Mxe
65 (2 1/2)	EB-05	81.0	M6x10
80 (3)	EB-10	99.7	M8x10
100 (4)	EB-10	119.7	M8x10

Dimension Table

Size	A (B)	φd	Thread						ℓ	φdo	h	h2	φDu	A1	A2	B1	B2
			JIS (Rc) , DIN (Rc)		ANSI (NPT)		DIN (Rp)										
			Rc	L	NPT	L	Rp	L									
□ 65 (2 1/2)	65	2 1/2	227±3.0	2 1/2	212±3.0	2 1/2	212±3.0	32	96	239	81	150	82.5	76.0	63.5	78.0	
□ 80 (3)	80	3	278±3.0	3	261±3.0	3	261±3.0	37	113	285	99	186	97.5	109.0	67.0	80.5	
□ 100 (4)	100	4	330±3.0	4	315±3.0	4	315±3.0	45	144	316	121	228	97.5	109.0	67.0	80.5	

1. Thread dimension is in accordance with the following standard; JIS B 0203, ANSI B1.20.1 and DIN2501 PN10/PN16 (ISO7005 PN10) .

2. If a fixing insert bolt is used, it should not be screwed in beyond dimension e.



Client name		Date
Socket Standard	□JIS □ANSI □DIN	Approved by:
Voltage	□AC100/110V (50/60Hz) □AC200/220V (50/60Hz)	
Oil Free	□YES	

ESLON Electric Ball Valve: K-Type  
Threaded socket/65A-100A

Drawing No. | BVT651HNXE

**SEKISUI SEKISUI CHEMICAL CO.,LTD.**